



BEDROOMS

2

BATHROOMS

1

RECEPTION ROOMS

1

COUNCIL TAX

B

KEY FEATURES

- A well-presented two-bedroom semi-detached home within the highly sought-after Hallam Fields Development
- Lounge with patio doors leading to generous rear garden
- Separate beautifully fitted kitchen with integrated appliances
- Downstairs W.C for convenience
- Two generously proportioned bedrooms and family bathroom with shower attachment
- Allocated parking to the rear of the home with parking for two vehicles
- Available with NO UPWARD CHAIN

PROPERTY OVERVIEW

Creightons Estate Agents are pleased to bring to the market this well-presented two-bedroom home in the popular village of Birstall. This property is thoughtfully presented and spans two floors, offering comfortable living spaces in the desirable village of Rothley. The property benefits from a generous garden, allocated off-road parking, and is available with NO UPWARD CHAIN, making it an ideal purchase for both first-time buyers and those looking to settle into a thriving community.

ADDITIONAL PHOTOGRAPHY

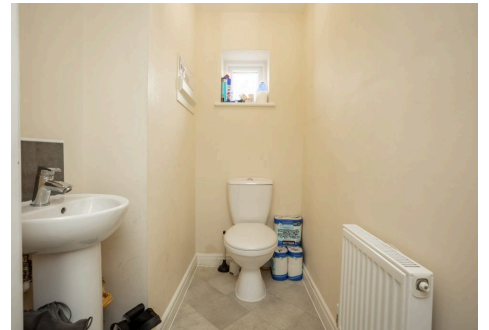


FLOORPLAN

No floorplan found for this property.



Score	Energy rating	Current	Potential
92+	A		97 A
81-91	B	83 B	
69-80	C		
55-68	D		
39-54	E		
21-38	F		
1-20	G		



ROTHLEY OFFICE

0116 3195657

SILEBY OFFICE

01509 458 333

WEBSITE

creightonsestateagents.co.uk