



## Victoria Road, W3

£2,000 Per calendar month

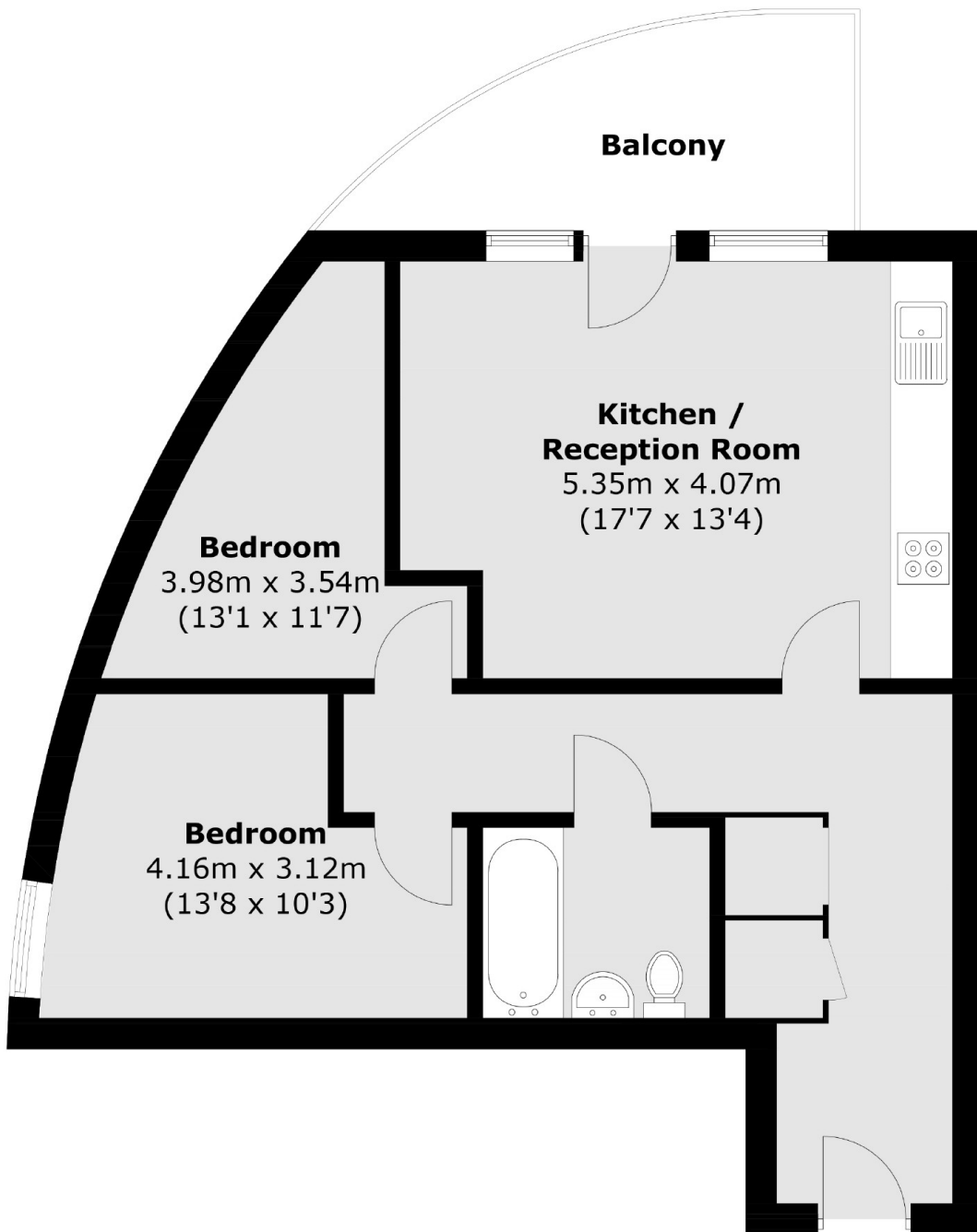
A large two double bedroom apartment with a modern bathroom and just under 700 sq.ft of internal living space. The flat has a private balcony and is ideally located.

Ebbett Court is situated approximately 100 yards from North Acton tube station (Central line) and half a mile from Acton Main Line station (Elizabeth Line).

### Features

- Purpose Built Development
- Two Double Bedrooms
- Close to Tube Station
- Private Balcony
- Open Plan Kitchen
- Large Living Room

Victoria Road,  
London, W3



Total area (approx.): 61.4 sq. m (660.9 sq. ft)  
Balcony area : 8.0 sq. m (86.1 sq. ft)