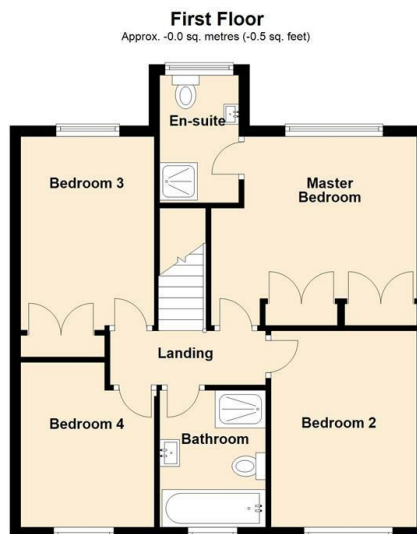
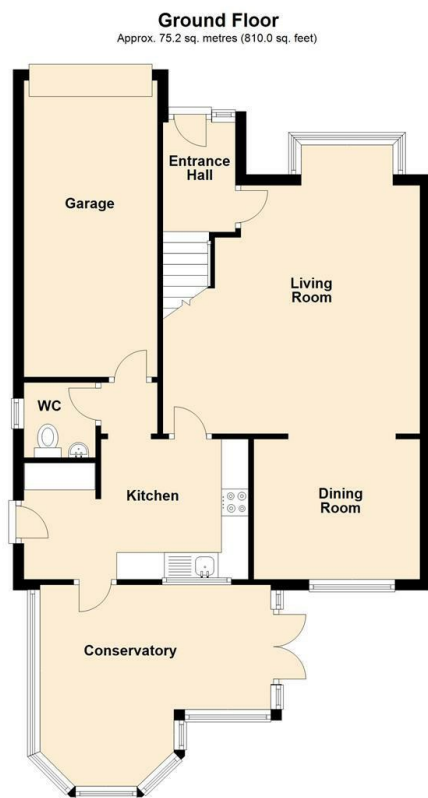




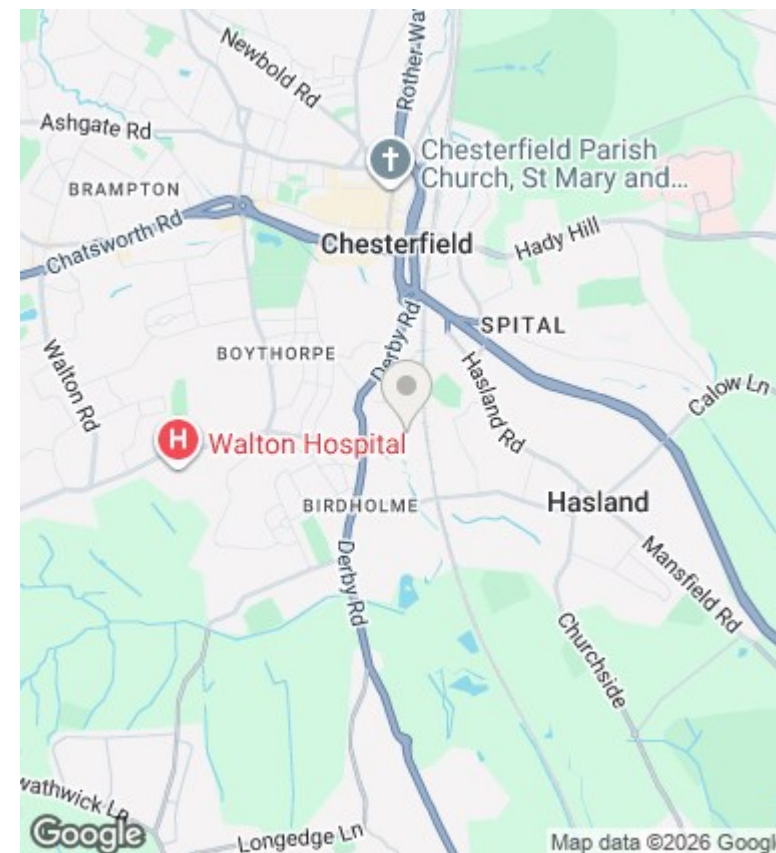
19 Skeldale Drive, Chesterfield, Derbyshire, S40 2UW

Offers In The Region Of £335,000

- Detached Family Residence
- Stylish and Contemporary Kitchen
- Popular And Convenient Location
- Garage and Off Road Parking
- 4 Double Bedrooms
- Refitted Family Bathroom And En-Suite
- Gas Fired Central Heating
- Superbly Presented Throughout
- Large Conservatory
- uPVC Double Glazed



Total area: approx. 75.2 sq. metres (809.4 sq. feet)



Directions

Viewings

Viewings by arrangement only. Call 0114 283 4050 to make an appointment.

Council Tax Band

B

EPC Rating:

C

Energy Efficiency Rating		Current	Potential
Very energy efficient - lower running costs			
(92 plus) A			
(81-91) B			82
(69-80) C		70	
(55-68) D			
(39-54) E			
(21-38) F			
(1-20) G			
Not energy efficient - higher running costs			
England & Wales		EU Directive 2002/91/EC	