



Romeyn Road, SW16
£935,000

Dexters



Romeyn Road, SW16

This beautifully presented four-bedroom semi-detached home offers an exceptional blend of space, comfort, and modern open-plan living. With over 1,485 sq ft of well-designed interiors, this property is perfect for families seeking both style and practicality.

The heart of the home is the expansive open-plan living area, designed to maximise natural light and create a seamless flow between lounge, dining, and kitchen spaces. Perfect for both everyday living and hosting guests.

The property boasts a private, well-proportioned garden and a private garage, providing secure off-street parking along with substantial additional storage capacity.

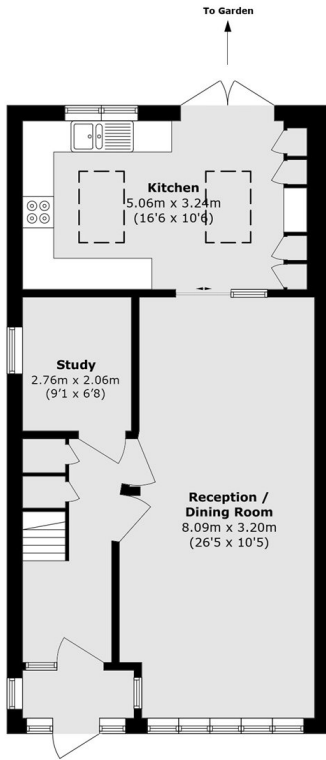
Romeyn Road enjoys a superb location, close to the vibrant array of independent shops, bars, and restaurants along Streatham High Road. The area is highly desirable for families, with Dunraven School nearby and a number of other excellent primary and secondary schools within easy reach. Commuters benefit from a variety of excellent transport links: Streatham Hill Station, approximately half a mile away, provides frequent rail services to London Victoria and numerous local bus routes to Brixton. Additional rail options are available from Streatham Station (Thameslink) and Tulse Hill

Features

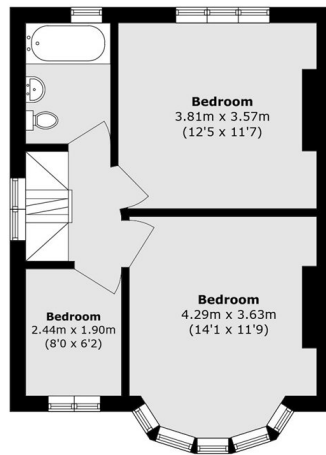
- Four Bedrooms
- Garage
- Off-Street Parking
- Semi Detached
- Open-Plan Living
- Over 1,485 Sq Ft



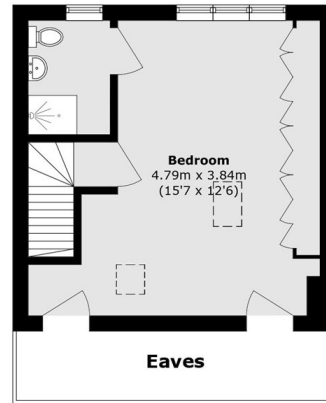
Romeyn Road, London, SW16



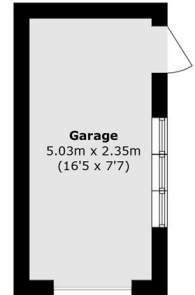
Ground Floor



First Floor



Second Floor



Garage

Total area (approx.): 138.0 sq. m (1485.4 sq. ft)

Garage area (approx.): 11.8 sq. m (127.0 sq. ft)

(Excluding Eaves)