

The Davidson logo is positioned in the top right corner of the main kitchen image. It features a small blue circular icon with a white dot in the center, followed by the word "Davidson" in a bold, dark blue, sans-serif typeface.

**PLACIDO**  
**34 RYLAND STREET, B16 8DB**

**£875 PCM**

PLACIDO - JUPITER | One Bedroom | Furnished | Secure & Allocated Parking |  
Walking distance to Brindley Place | 5th Floor Apartment | Available 7th February  
2026

Council Tax Band: C    EPC: C



PLACIDO - JUPITER | One Bedroom, One Bath | Fully Furnished | Secure & Allocated  
Parking | Walking distance to Brindley Place

### Full Description

A bright and spacious modern one-bedroom apartment with secure parking, located in Placido, Jupiter Apartments on Ryland Street.

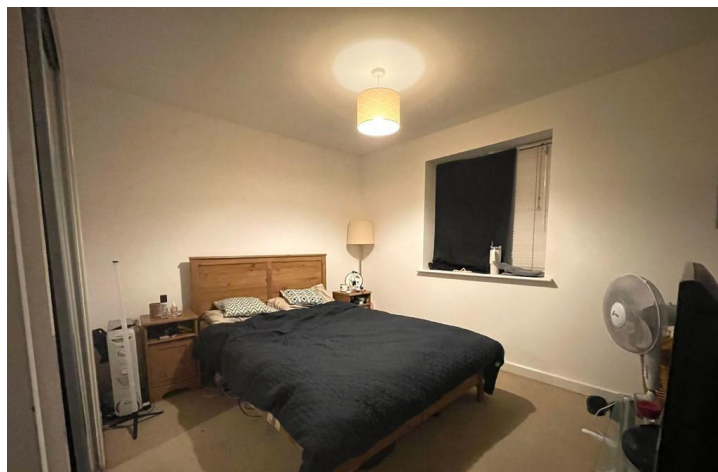
The property is ideally positioned close to Broad Street, Five Ways, Brindleyplace, and the vibrant canal-side bar and restaurant quarter, offering excellent city-centre living.

The apartment has a large open-plan living area, a fully fitted kitchen, and a contemporary bathroom with bath and overhead shower. The hallway benefits from an airing cupboard and additional space for coat storage. The apartment is offered fully furnished, including a sofa, dining table and chairs. The bedroom is furnished with a wardrobe, double bed, and bedside table.

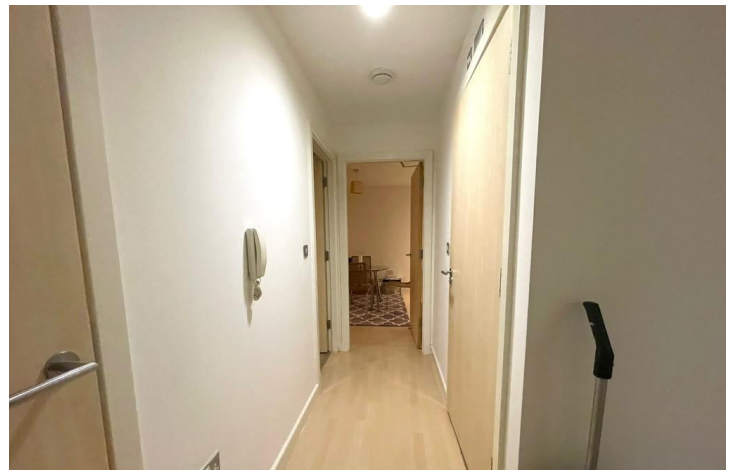
Jupiter Apartments are centrally located with excellent public transport links nearby, with main bus routes within walking distance and Birmingham New Street Station approximately a 15–20 minute walk away.

Council Tax Band: C

EPC Rating: C



5th Floor | Open Plan Living Area | Available 7th February 2026 | |



## Floor Plan

Approx. 51.1 sq. metres (549.7 sq. feet)



Total area: approx. 51.1 sq. metres (549.7 sq. feet)

This floor plan is not to scale and is for illustration/marketing purposes only.  
Plan produced using PlanUp.

### Energy Efficiency Rating

Score	Energy rating	Current	Potential
92+	A		
81-91	B		
69-80	C	77   C	80   C
55-68	D		
39-54	E		

# Davidson

OFFICE  
22 Harborne Road  
Birmingham  
West Midlands

0121 455 7727  
info@davidsonstates.co.uk  
www.davidsonstates.co.uk

Agents Note: Whilst every care has been taken to prepare these particulars, they are for guidance purposes only. All measurements are approximate and are for general guidance purposes only and whilst every care has been taken to ensure their accuracy, they should not be relied upon and potential buyers/tenants are advised to recheck the measurements