



Belvedere Drive, SW19

£725,000

A three double bedroom, two bathroom apartment, located on the top floor of a purpose built development in Wimbledon Village. The property has far reaching views, a large private balcony and an allocated parking space.

Perfectly located along Belvedere Drive, close to Wimbledon Village, just a moments walk to The Common. Restaurants and bars are on the doorstep of this apartment creating a cosmopolitan style atmosphere to live in, with transport just moments away.

Features

- Three Double Bedrooms
- Two Bathrooms
- No Onward Chain
- Top Floor With Lift
- Large Private Balcony
- Far Reaching Views



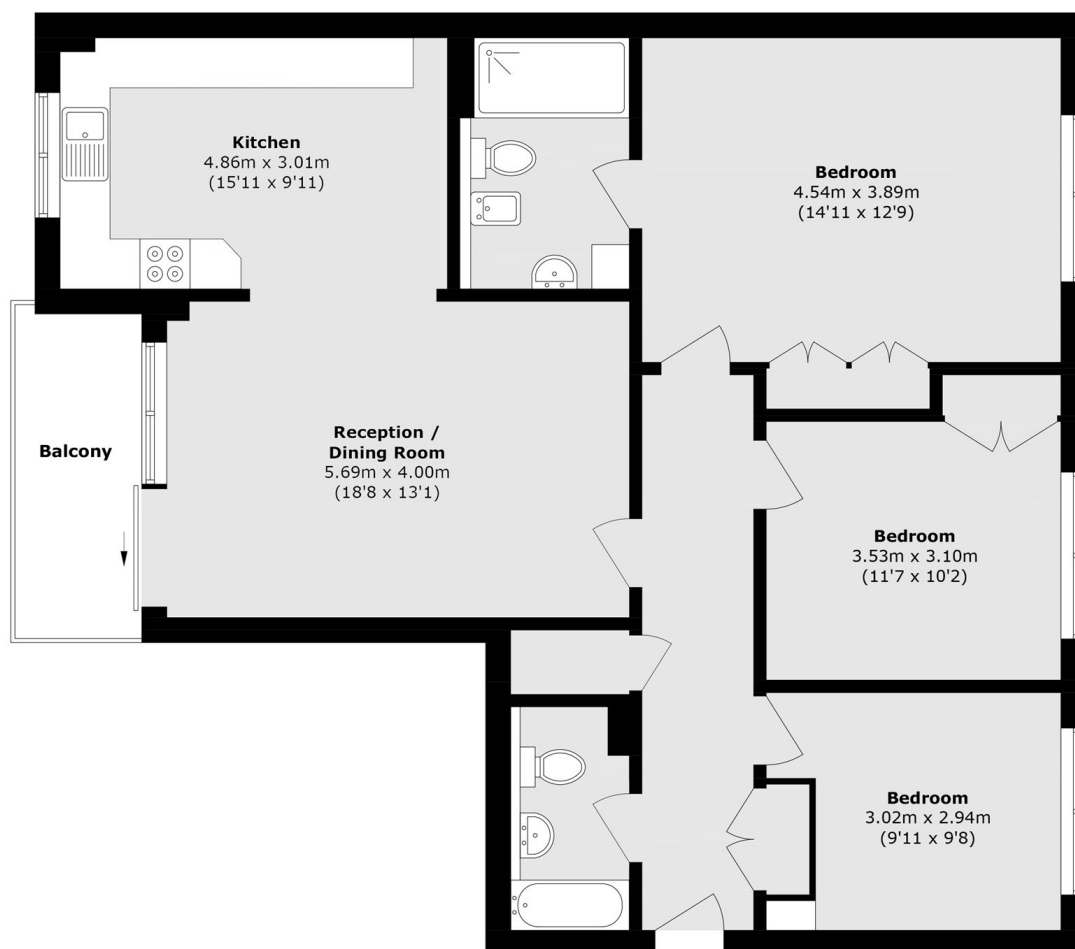
Belvedere Drive, SW19

Located with a dual aspect at the corner of the building, on the top floor, this property is not just flooded with light, but has superb views spanning Wimbledon and beyond. The property occupies part of the top floor, with the convenience of a lift.

There are three double bedrooms and two bathrooms, measuring over 1,100 square feet. With the added convenience of an underground parking space, guest parking, proximity to Wimbledon Village and the location within the development, this is an extremely rare offering to the market.



Belvedere Drive, London, SW19



Total area (approx.): 102.9 sq. m (1107.6 sq. ft)

Balcony area (approx.): 6.1 sq. m (65.7 sq. ft)