



Primlea Court Corbridge

- Ground Floor Retirement Flat
- Two Bedrooms
- En-Suite
- Patio Door
- Communal Parking & Grounds
- Desirable Location

Offers in the Region of **£ 155,000**

01434 601616
46 Priestpopple, Hexham, NE46 1PQ

ROOK
MATTHEWS
SAYER

www.rookmatthewssayer.co.uk
hexham@rmsestateagents.co.uk

Primlea Court, Corbridge

PROPERTY DESCRIPTION

Superb two bedroom ground floor retirement apartment with en-suite shower room and patio door.

The apartment is entered via the internal access door into the apartment's central hallway offering doors to lounge, both bedrooms, shower room and utilities cupboard.

The lounge is situated to the front elevation overlooking the patio area and car park beyond. This apartment benefits from having a patio door for direct external access. Off the lounge is the kitchen with a range of wall and base units, fridge freezer and over/hob.

The main bedroom is a large double with window to front elevation and fitted wardrobes to the rear and well-equipped en-suite shower room beyond. The second bedroom is another double with window to front elevation.

The main shower room is off the central hallway and is also well equipped.

The apartment does have a large utilities cupboard off the hallway which contains hot water tank, as well as electricity consumer unit and cloaks hanging and some shelving in place.

Primlea Court is situated just out of the centre of Corbridge giving it a quiet position but still within reach of amenities. There are communal areas and facilities to make use of such as lounge, laundry and refuse areas. Parking is offered in the form of a communal car park for all residents.

Emergency assistance pull cords are fitted throughout the apartment.

These apartments do come to the market every now and then but not very often on the ground floor with a second bathroom so we anticipate it won't stay around for long.

INTERNAL DIMENSIONS

Lounge: (abnormal shape) 19'8 max x 10'9 max (5.99m x 3.28m)

Kitchen: (abnormal shape) 8'6 max x 7'7 max (2.59m x 2.31)

Bedroom 1: (abnormal shape) 15'0 max x 8'7 max (4.57m x 2.62m)

En-Suite: 8'7 into shower x 5'6 max (2.62m x 1.68m)

Bedroom 2: (abnormal shape) 16'2 max x 9'1 max (4.93m x 2.77m)

Shower Room: 5'7 into shower x 6'8 (1.7m x 2.03m)

Utilities Cupboard: 6'3 x 3'4 (1.91m x 1.02m)

PRIMARY SERVICES SUPPLY

Electricity: Mains

Water: Mains

Sewerage: Mains

Heating: Gas

Broadband: Fibre to Cabinet

Mobile Signal / Coverage Blackspot: No

Parking: Communal Car Park

MINING

The property is not known to be on a coalfield and not known to be directly impacted by the effect of other mining activity. The North East region is famous for its rich mining heritage and confirmation should be sought from a conveyancer as to its effect on the property, if any.

ACCESSIBILITY

This property has ramp access to front door and the building has lift access to all floors.

TENURE

Leasehold. It is understood that this property is leasehold. Should you decide to proceed with the purchase of this property, the Tenure and associated details and costs must be verified by your Legal Advisor before you expend costs. Length of Lease: 125 years from 1/2/2005
Ground Rent: £230 per month.
Service Charge: £4800 per annum

COUNCIL TAX BAND: D

EPC RATING: C

HX00006360.BJ.JR.14.10.24.V.1

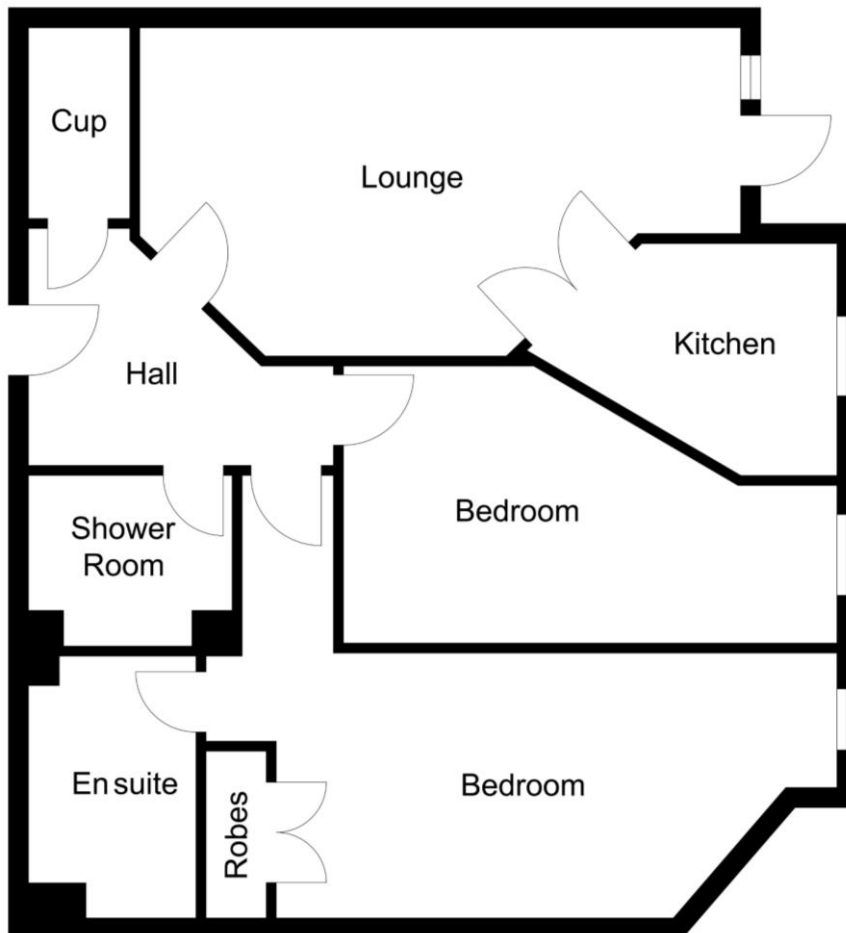
Important Note: Rook Matthews Sayer (RMS) for themselves and for the vendors or lessors of this property, whose agents they are, give notice that these particulars are produced in good faith, are set out as a general guide only and do not constitute part or all of an offer or contract. The measurements indicated are supplied for guidance only and as such must be considered incorrect. Potential buyers are advised to recheck the measurements before committing to any expense. RMS has not tested any apparatus, equipment, fixtures, fittings or services and it is the buyer's interests to check the working condition of any appliances. RMS has not sought to verify the legal title of the property and the buyers must obtain verification from their solicitor. No persons in the employment of RMS has any authority to make or give any representation or warranty whatever in relation to this property.

Money Laundering Regulations – intending purchasers will be asked to produce original identification documentation at a later stage and we would ask for your co-operation in order that there will be no delay in agreeing the sale. We will also use some of your personal data to carry out electronic identity verification. This is not a credit check and will not affect your credit score.

16 Branches across the North-East



Primlea Court, Corbridge



Important Note: Rook Matthews Sayer (RMS) for themselves and for the vendors or lessors of this property, whose agents they are, give notice that these particulars are produced in good faith, are set out as a general guide only and do not constitute part or all of an offer or contract. The measurements indicated are supplied for guidance only and as such must be considered incorrect. Potential buyers are advised to recheck the measurements before committing to any expense. RMS has not tested any apparatus, equipment, fixtures, fittings or services and it is the buyer's interests to check the working condition of any appliances. RMS has not sought to verify the legal title of the property and the buyers must obtain verification from their solicitor. No persons in the employment of RMS has any authority to make or give any representation or warranty whatever in relation to this property.

Money Laundering Regulations – intending purchasers will be asked to produce original identification documentation at a later stage and we would ask for your co-operation in order that there will be no delay in agreeing the sale. We will also use some of your personal data to carry out electronic identity verification. This is not a credit check and will not affect your credit score.

16 Branches across the North-East

