





£235,000

Located in the Lakes Estate is this three-bedroom terraced family home. The property comprises a kitchen, dining room, lounge and bathroom with separate w.c. Externally you have both front and rear gardens with communal parking.

Property Description

ENTRANCE

Composite door to entrance hall.

ENTRANCE HALL

Radiator, stairs to first floor, doors to lounge, dining room and kitchen.

LOUNGE

Double glazed sliding door to rear aspect. Radiator.

DINING ROOM

Radiator.

KITCHEN

Double glazed window to front aspect. Range of wall mounted and floor standing units, stainless steel sink with mixer tap, splash back tiling, space for cooker, space for washing machine, wall mounted boiler.

LANDING

Radiator, doors to bedrooms and bathroom.

BEDROOM ONE

Two double glazed windows to rear aspect. Radiator, storage cupboard.

BEDROOM TWO

Double glazed window to front aspect. Radiator.

BEDROOM THREE

Double glazed window to front aspect. Radiator.

BATHROOM

Panelled bath with electric shower attachment over mixer tap, wash hand basin with mixer tap, part tiled walls, extractor fan, radiator.

SEPARATE W.C.

Low level w.c., wash hand basin with mixer tap.

OUTSIDE

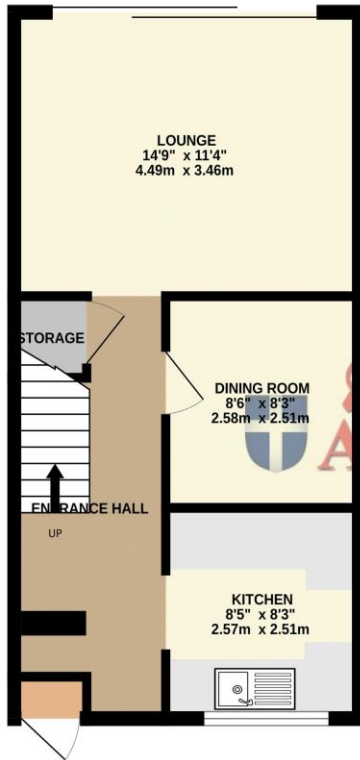
FRONT GARDEN

Laid to lawn with pathway to front door, enclosed by timber fencing panels and brick wall.

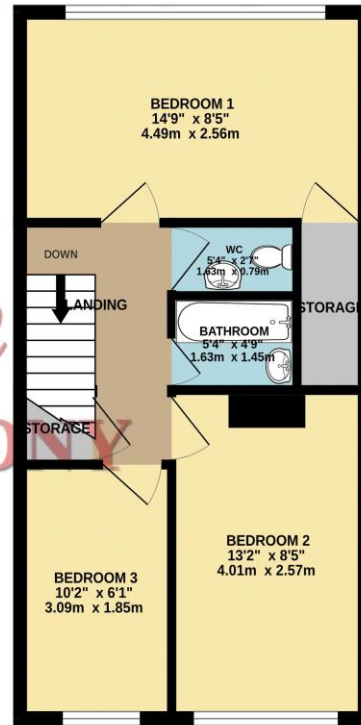
REAR GARDEN

Laid to lawn with patio area, shed, rear gated access, enclosed by fencing panels.

GROUND FLOOR
413 sq.ft. (38.3 sq.m.) approx.



1ST FLOOR
411 sq.ft. (38.2 sq.m.) approx.



Michael
ANTHONY

TOTAL FLOOR AREA : 824 sq.ft. (76.5 sq.m.) approx.

Whilst every attempt has been made to ensure the accuracy of the floorplan contained here, measurements of doors, windows, rooms and any other items are approximate and no responsibility is taken for any error, omission or mis-statement. This plan is for illustrative purposes only and should be used as such by any prospective purchaser. The services, systems and appliances shown have not been tested and no guarantee as to their operability or efficiency can be given.
Made with Metropix ©2026

MONEY LAUNDERING REGULATIONS 2017 intending purchasers will be asked to produce identification and proof of financial status when an offer is received. We would ask for your co-operation in order that there will be no delay in agreeing the sale.

THE CONSUMER PROTECTION REGULATIONS 2008 The Agent has not tested any apparatus, equipment, fixtures and fittings or services and so cannot verify that they are in working order or fit for the purpose. A Buyer is advised to obtain verification from their Solicitor or Surveyor. References to the Tenure of a Property are based on information supplied by the Seller. The Agent has not had sight of the title documents. A Buyer is advised to obtain verification from their Solicitor. You are advised to check the availability of this property before travelling any distance to view. We have taken every precaution to ensure that these details are accurate and not misleading. If there is any point which is of particular importance to you, please contact us and we will provide any information you require. This is advisable, particularly if you intend to travel some distance to view the property. The mention of any appliances and services within these details does not imply that they are in full and efficient working order. These particulars are in draft form awaiting Vendors confirmation of their accuracy. These details must therefore be taken as a guide only and approved details should be requested from the agents

190 Queensway Bletchley Milton Keynes MK2 2ST
01908 648 666 | bletchley@maea.co.uk