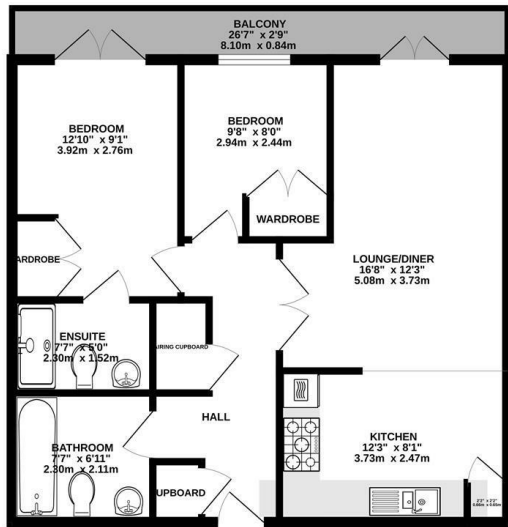




Keith
Ashton

The Spires,

GROUND FLOOR
658 sq.ft. (61.2 sq.m.) approx.



TOTAL FLOOR AREA: 658 sq.ft. (61.2 sq.m.) approx.
Measurements are approximate. Not to scale. Dimensions represent only.
Made with Metropac CAD

£375,000

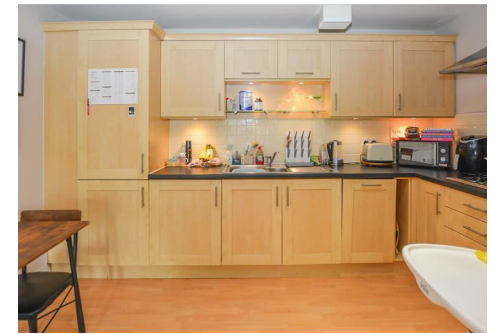


13 The Spires, , CM14 4GX

We are delighted to bring to market this well-presented ground floor apartment, ideally located close to Brentwood High Street with its selection of shops, bars, and restaurants.

The property features a bright and generously sized lounge with double doors opening onto a private balcony spanning the full width of the apartment. This room flows seamlessly into a well-appointed kitchen fitted with a range of eye and base level units along with integrated appliances. There are two good-sized bedrooms, with the principal bedroom benefiting from an ensuite shower room, while a family bathroom completes the internal accommodation.

Situated within easy reach of Brentwood Station, offering excellent transport links into London via the Elizabeth Line, this property is perfectly suited to commuters, first-time buyers and investors alike. Further benefits include allocated parking and secure entry system.



Energy Efficiency Rating		Environmental Impact (CO ₂) Rating	
Current	Potential	Current	Potential
82	82	A	A
<p>Very energy efficient - lower running costs</p> <p>Very environmentally friendly - lower CO₂ emissions</p>			
<p>England & Wales EU Directive 2002/91/EC</p>			

SERVICES:

Local Authority:
Council tax band: D
Post code: CM14 4GX

VIEWING:

Strictly by prior arrangement with Keith Ashton Estate Agents

OPENING HOURS:

Monday to Friday: 8.45AM - 6.30PM | Saturdays: 9AM - 5.30PM | Sundays: 10AM - 2PM

MORTGAGE INFORMATION:

We offer the additional facility of an in-house Independent Financial Adviser who will access all mortgage lenders with the purpose of providing you with the benefit of choice. For quotations or comparables please call 01277 260858 or visit our interactive website at www.mortgagebusiness.net



We the Agent have not tested any apparatus, fittings or services for this property. The plot size is intended merely as a guide and has not been officially measured or verified by the Agent. Photographs are for illustration only and may depict items which are not for sale or included in the sale of the property. As part of the service we offer we may recommend ancillary services to you which we believe may help you with your property transaction. We wish to make you aware, that should you decide to use these services we will receive a referral fee. For full and detailed information please visit 'terms and conditions' on our website www.keithashton.co.uk

Brentwood
Tel. 01277 260858

Village Office
Tel. 01277 375757

Lettings Office
Tel. 01277 202200

Explore more @ www.keithashton.co.uk

