



HUNT FRAME  
ESTATE AGENTS

## 17 Melvill Lane, Eastbourne, BN20 9EA

### Price Guide £575,000



GUIDE PRICE £575,000 TO £595,000

HUNT FRAME ESTATE AGENTS are proud to offer this lovely DETACHED SUSSEX STYLE HOUSE with ATTRACTIVE PART TILE HUNG ELEVATIONS occupying a SUPERB ELEVATED position within this often requested road. The well appointed accommodation consists of a DOUBLE RECEPTION ROOM, a REFITTED KITCHEN and CLOAKROOM to the ground floor with THREE BEDROOMS and a FAMILY BATHROOM to the first floor, which has FAR REACHING VIEWS across Eastbourne to the front aspect. Established gardens to the rear with a DETACHED GARAGE and AMPLE OFF ROAD PARKING to the front. Scope also exists to extend, subject to consents and it is offered to the market CHAIN FREE.

Melvill Lane sits between the Ratton Estate and the old world village of Willingdon with its ancient parish church. Eastbourne's town centre is about 3 miles distant and offers a wide range of amenities including the Beacon shopping centre and mainline rail services to London Victoria and beyond.





ENTRANCE

UPVC and glazed entrance door with matching panel to the side, access into the hallway.

HALL

Parquet wooden flooring, radiator, under stairs storage cupboard, doors to the reception area, kitchen and WC.

CLOAKROOM

Refitted WC comprising of a low-level WC with a concealed cistern, wash hand basin set in a vanity unit with cupboards and drawers, tiled flooring, ladder style radiator, UPVC patterned double glazed window to the side aspect.

DOUBLE RECEPTION

23'6 x 12'7 (7.16m x 3.84m)  
Double reception being triple aspect with UPVC double glazed windows to the front and side elevations with the front having over rooftop views, sliding patio doors give access to the conservatory, parquet wooden flooring, plinth with electric freestanding fire, two radiators.

CONSERVATORY

11'7 x 11'1 (3.53m x 3.38m)  
Of UPVC construction with a dwarf brick wall, glazed pitched roof, radiator, tiled flooring, double glazed windows with lovely views over the gardens with double opening French doors giving access to the same.

KITCHEN

12'9 x 10'8 (3.89m x 3.25m)  
Lovely farmhouse style shaker kitchen with white units with wood block worktops, integral fridge/freezer, deep pan drawers and cupboards, corner carousel, integral dishwasher, eyelevel double oven with a four ring electric hob to the side with a canopied stainless steel extractor, Victorian style tiled splashbacks, matching wooden upstands, plumbing and space for a washing machine, ceramic sink unit with a swan neck mixer tap, radiator, recessed ceiling lighting, UPVC double glazed window to the rear aspect overlooking the gardens with a glazed door giving access to the side aspect.

FIRST FLOOR

First floor landing, double glazed window to the front elevation with distant over

rooftop views across Eastbourne and the coast beyond, loft access, doors to the three bedrooms and bathroom, large airing cupboard.

BEDROOM 1

13'0 x 11'3 (3.96m x 3.43m)  
Dual aspect with UPVC double glazed windows to the front and side elevations with the former having glorious distant over rooftop views, radiator.

BEDROOM 2

11'1 x 10'11 (3.38m x 3.33m)  
UPVC double glazed window to the rear elevation with views over the gardens, radiator, fitted double wardrobe with storage above, adjacent matching single wardrobe with again storage above.

BEDROOM 3

9'7 x 7'6 (2.92m x 2.29m)  
UPVC double glazed window to the rear elevation, radiator, fitted louvre fronted storage cupboard with additional cupboard above.

FAMILY BATHROOM

Comprising of a panelled bath with a Triton shower unit and shower screen, low-level WC, pedestal wash hand basin, fully tiled walls, laminate wood effect flooring, ladder style radiator, shaver point, UPVC double glazed patterned window to the side aspect.

OUTSIDE - REAR GARDENS

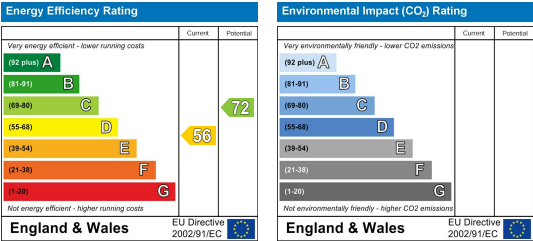
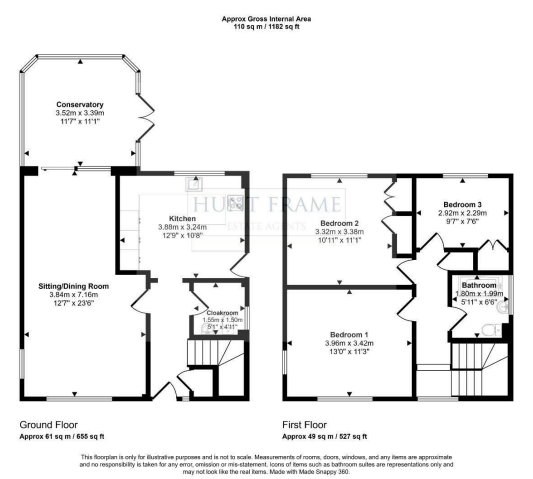
Gently sloping gardens to the rear boundary with mature and established borders which ensure excellent privacy, central lawn, a paved patio which is adjacent to the conservatory, access to a timber storage shed, gated access to the front.

GARAGE

Up and over door to the front, power and light.

DRIVEWAY & FRONT GARDENS

Large area of lawn with display borders, paved off road parking for two or three vehicles access to the detached garage.



These particulars, whilst believed to be accurate are set out as a general outline only for guidance and do not constitute any part of an offer or contract. Intending purchasers should not rely on them as statements of representation of fact, but must satisfy themselves by inspection or otherwise as to their accuracy. No person in this firms employment has the authority to make or give any representation or warranty in respect of the property.