



Connells

Perivale Gardens
WATFORD



Property Description

A spacious three bedroom semi detached home located in this popular but quiet residential location in the Kingswood development. This home offers spacious accommodation three bedrooms all on the first floor, kitchen, lounge and diner on the ground floor. There is off road parking and a well-kept large rear garden. Well placed for Stanborough primary and secondary schools plus Leavesden Green JMI and the North Orbital Road perfect for M25 & M1 connections, your viewing is highly recommended. Perfect for families looking to redecorate and create a new family home.

Entrance Porch

Front door.

Entrance Hall

Front door.

Lounge

11' 6" x 10' 7" (3.51m x 3.23m)

Dining Room

17' 9" x 13' 3" (5.41m x 4.04m)

Kitchen

6' 3" x 6' 3" (1.91m x 1.91m)



First Floor Landing

Bedroom 1

13' 2" x 10' 5" (4.01m x 3.17m)

Bedroom 2

11' 9" x 10' 7" (3.58m x 3.23m)

Bedroom 3

8' 7" x 7' 1" (2.62m x 2.16m)

Bathroom

Outside

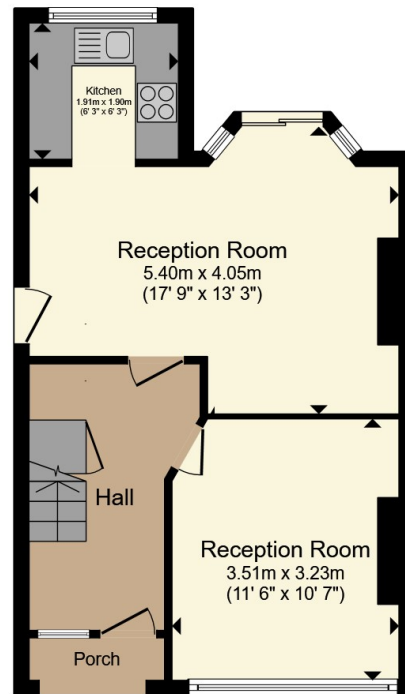
Front Garden

Rear Garden

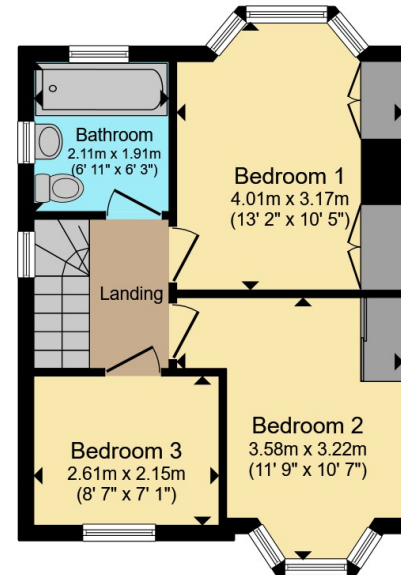








Ground Floor



First Floor

Total floor area 77.5 m² (835 sq.ft.) approx

This floor plan is for illustrative purposes only. It is not drawn to scale. Any measurements, floor areas (including any total floor area), openings and orientation are approximate. No details are guaranteed, they cannot be relied upon for any purpose and they do not form part of any agreement. No liability is taken for any error, omission or misstatement. A party must rely upon its own inspection(s). Powered by www.propertybox.io

Connells

To view this property please contact Connells on

T 01923 674504
E leavesden@connells.co.uk

1 Cunningham Way Leavesden
Abbots Langley WD25 7NG

EPC Rating: D Council Tax
Band: D

Tenure: Freehold

view this property online connells.co.uk/Property/LEA103491



1. MONEY LAUNDERING REGULATIONS Intending purchasers will be asked to produce identification documentation at a later stage and we would ask for your co-operation in order that there will be no delay in agreeing the sale. 2. These particulars do not constitute part or all of an offer or contract. 3. The measurements indicated are supplied for guidance only and as such must be considered incorrect. Potential buyers are advised to recheck measurements before committing to any expense. 4. We have not tested any apparatus, equipment, fixtures, fittings or services and it is in the buyers interest to check the working condition of any appliances.

Connells Residential is registered in England and Wales under company number 1489613, Registered Office is Cumbria House, 16-20 Hockliffe Street, Leighton Buzzard, Bedfordshire, LU7 1GN. VAT Registration Number is 500 2481 05.

See all our properties at www.connells.co.uk | www.rightmove.co.uk | www.zoopla.co.uk

Property Ref: LEA103491 - 0004