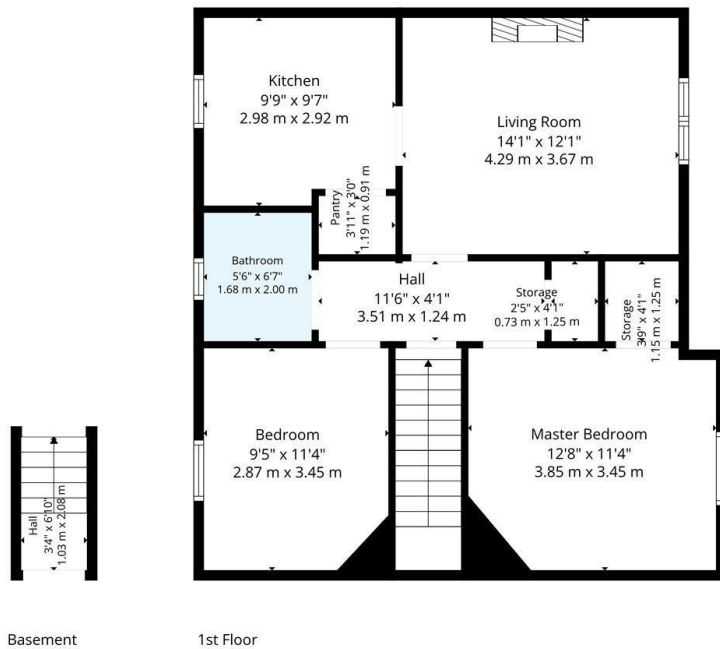




148 Carsaig Drive, Glasgow, G52 1AR

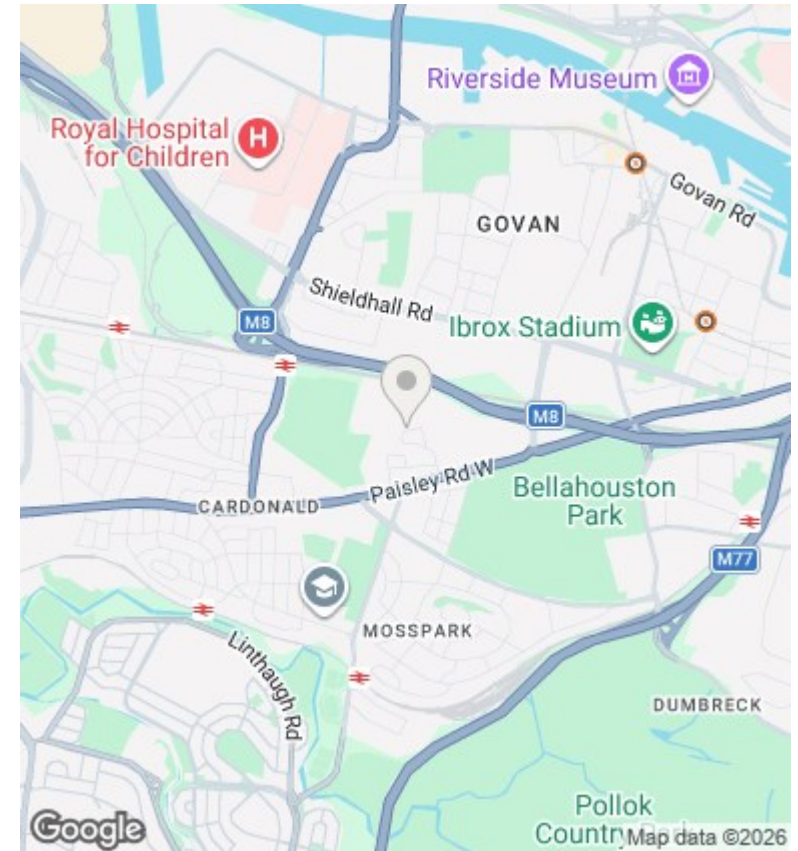
Offers Over £95,000

- Two bedroom upper cottage flat
- Spacious Lounge
- Shower room
- EER Band
- Driveway parking
- Rear facing Kitchen
- Convenient southside location
- Large private garden to the rear
- Well proportioned double bedrooms
- Close to amenities on Paisley Road West



TOTAL: 230 sq. ft, 21 m²
 Basement: 23 sq. ft, 2 m², 1st floor: 207 sq. ft, 19 m²
EXCLUDED AREAS: LIVING ROOM: 174 sq. ft, 16 m², MASTER BEDROOM: 139 sq. ft, 13 m², BEDROOM: 104 sq. ft, 10 m², HALL: 48 sq. ft, 4 m², STORAGE: 27 sq. ft, 3 m², WALLS: 66 sq. ft, 6 m²

Floor Plan Created By Cubicase App. Measurements Deemed Highly Reliable But Not Guaranteed.



Directions

Viewings

Viewings by arrangement only. Call 01417262111 to make an appointment.

Council Tax Band

EPC Rating:

C

Energy Efficiency Rating		
	Current	Potential
Very energy efficient - lower running costs		
(92 plus) A		
(81-91) B		
(69-80) C	75	76
(55-68) D		
(39-54) E		
(21-38) F		
(1-20) G		
Not energy efficient - higher running costs		
Scotland	EU Directive 2002/91/EC	