

Bushey Road

Ickenham • Middlesex • UB10 8JX

PCM: £3,000 PCM



coopers
est 1986



Set in a beautiful tree lined close, this extended, detached four bedroom chalet bungalow offers fresh generously proportioned interiors with smart modern additions. It is located on Bushey Close which is a stroll to Ickenham village and it's selection of shops, trendy eateries and transport connections.

This is a unique four bedroom detached chalet bungalow which is set in a leafy road in Ickenham. Stylish and immaculately appointed throughout; having recently been extended and refurbished; it showcases impressive light filled interiors. The property comprises an impressive entrance hall which leads to three good sized bedrooms and a family room. There is a contemporary fully tiled bathroom. Heading towards the rear of the property is a modern white fitted kitchen with some high quality integrated appliances. The light filled spacious reception room has a patio door leading into the garden. On the first floor is an expansive master bedroom with stylish fully tiled en suite. This is a superb family home ideal for modern living.

Stunning finish

Great catchment for good schools

En suite

Parking

Garden

Modern kitchen

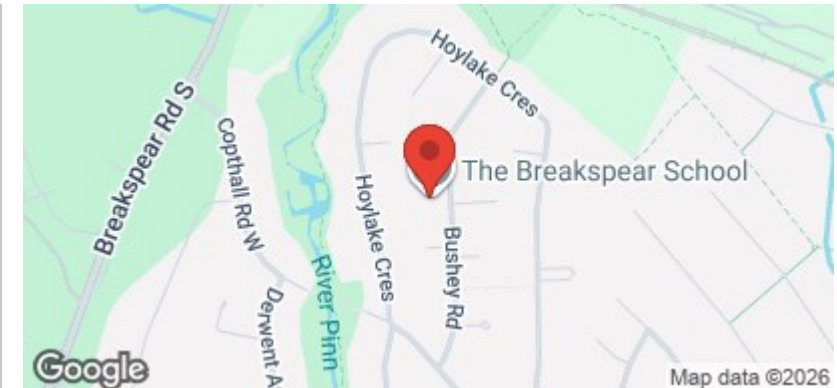
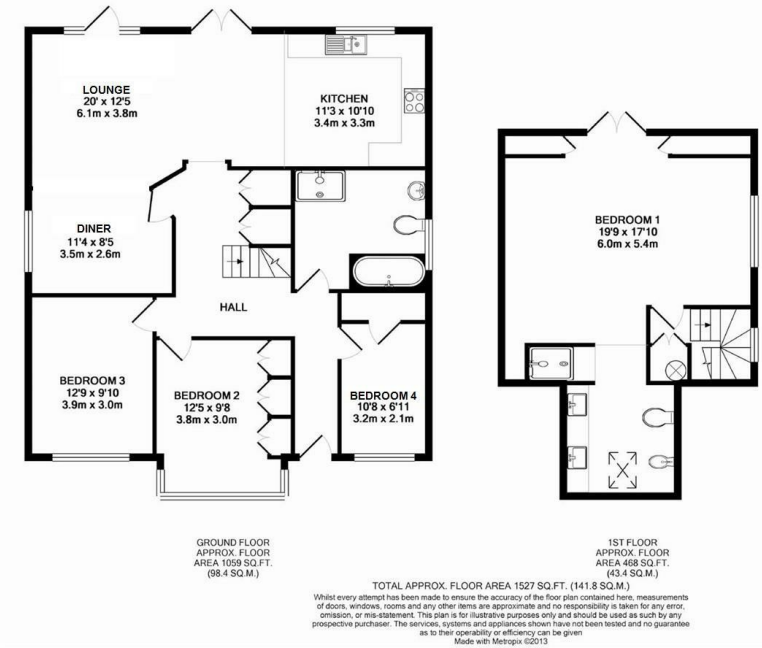
Beautiful bathroom

Spacious throughout

Furnished

Available Date

31st March 2026



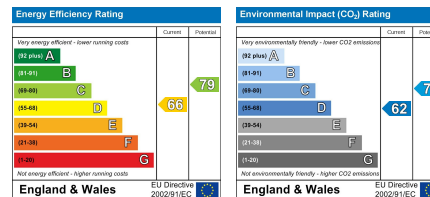
coopers
est 1986

01895 625 625

126-128 High Street, Ruislip,
Middlesex, HA4 8LL

rl@coopersresidential.co.uk

CoopersResidential.co.uk



Important Notice: These particulars, whilst believed to be accurate are set out as a general outline only for guidance and do not constitute any part of an offer or contract. Intending purchasers should not rely on them as statements or representation of fact, but must satisfy themselves by inspection or otherwise has the authority to make or give any representation or warranty in respect of the property.