



Redhill Court, Redhill Lane, Watton, Nr Thetford, IP25 6RE

£110,000

🛏 2 🚿 2 🚗 1



- Detached Park Home Bungalow
- Garage and Driveway
- Ensuite To The Master Bedroom
- Sought After Residential Park
- No Stamp Duty To Pay
- Two Double Bedrooms
- Lounge and Dining Room
- Double Glazing
- No Onward Chain
- Low-Maintenance Gardens



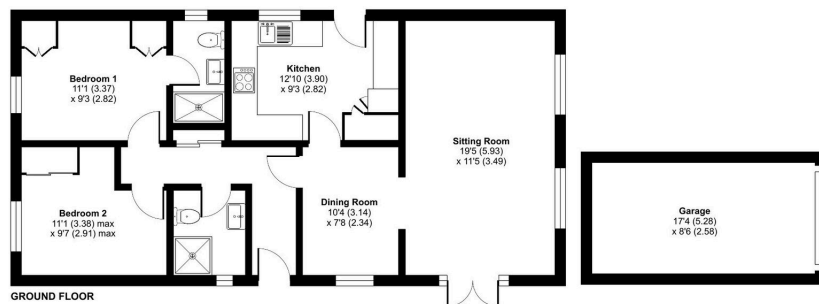
A well presented two double bedroom(40'x20') park home bungalow located on this sought after residential park for the over 45's near Thetford in Norfolk. The home itself offers space and flexibility including an entrance hall, separate sitting room and dining room, an ensuite shower room to the master bedroom, both bedrooms have built in wardrobes, a further guest shower room as well as a generous, low-maintenance plot with a garage and driveway to one side. The home is offered with no onward chain and should be viewed without delay!



Redhill Lane, Watton, Thetford, IP25

Approximate Area = 793 sq ft / 73.6 sq m
 Garage = 144 sq ft / 13.3 sq m
 Total = 937 sq ft / 86.9 sq m

For identification only - Not to scale



Floor plan produced in accordance with RICS Property Measurement 2nd Edition, incorporating International Property Measurement Standards (IPMS2 Residential). © richrecom 2025. Produced for The Park Home Agency Ltd. REF: 1356920



01793 230185
 sales@theparkhomeagency.co.uk

Agents Notes: All measurements are approximate and quoted in metric with imperial equivalents and for general guidance only and whilst every attempt has been made to ensure accuracy, they must not be relied on. The fixtures, fittings and appliances referred to have not been tested and therefore no guarantee can be given that they are in working order. Internal photographs are reproduced for general information and it must not be inferred that any item shown is included with the property. For a free valuation, contact the numbers listed on the brochure