

ALTON COURT, COPLEY CLOSE



£399,950

Discover this stunning purpose-built apartment located in the heart of Hanwell. Built in 2018, this contemporary home features over 700ft of generous living spaces, where every detail exudes quality and style. The undoubted star is bright and spacious, double-aspect reception room where you can enjoy direct access to the large southerly facing terrace; just perfect for soaking up the sun on leisurely weekends, or entertaining 'al fresco'. There's a modern integrated kitchen, 2 double bedrooms and a stylish fully-tiled bathroom too. The property also features communal courtyard gardens, ideal for children to play and families to relax outdoors. Don't miss out on this exceptional residence, contact us today to schedule an appointment and make this beautiful apartment your new home!

TUFFIN & WREN

Independent Estate Agents



Further Information

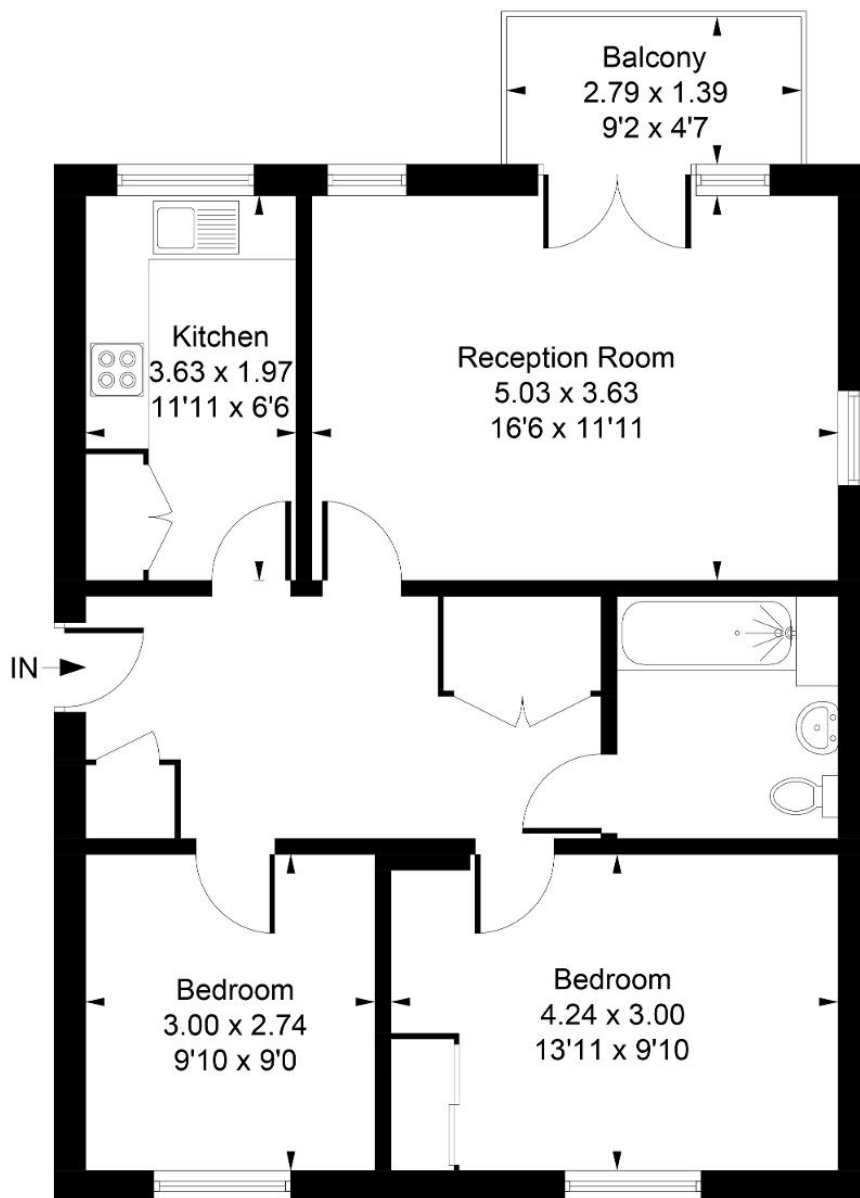
For more details please call us on **020 8840 0993** or send an email to homes@tuffin-wren.co.uk.

Please note it is not our company policy to test services, heating systems and domestic appliances, therefore we cannot verify that they are in working order. Prospective purchasers are advised to obtain verification from their solicitors and/or surveyors.

TUFFIN & WREN

Independent Estate Agents

Approximate Gross Internal Area
66.60 sq m / 717 sq ft



Whilst every attempt has been made to ensure the accuracy of the floor plan contained here, measurements of doors, windows, rooms and any other items are approximate and no responsibility is taken for any error, omission, or mis-statement.
This plan is for illustrative purposes only and should be used as such by any prospective purchaser.

© Vizion Property Marketing Produced for Tuffin and Wren

Score	Energy rating	Current	Potential
92+	A		
81-91	B	81 B	81 B
69-80	C		
55-68	D		
39-54	E		
21-38	F		
1-20	G		