



Bromyard Avenue, W3

£415 Per week

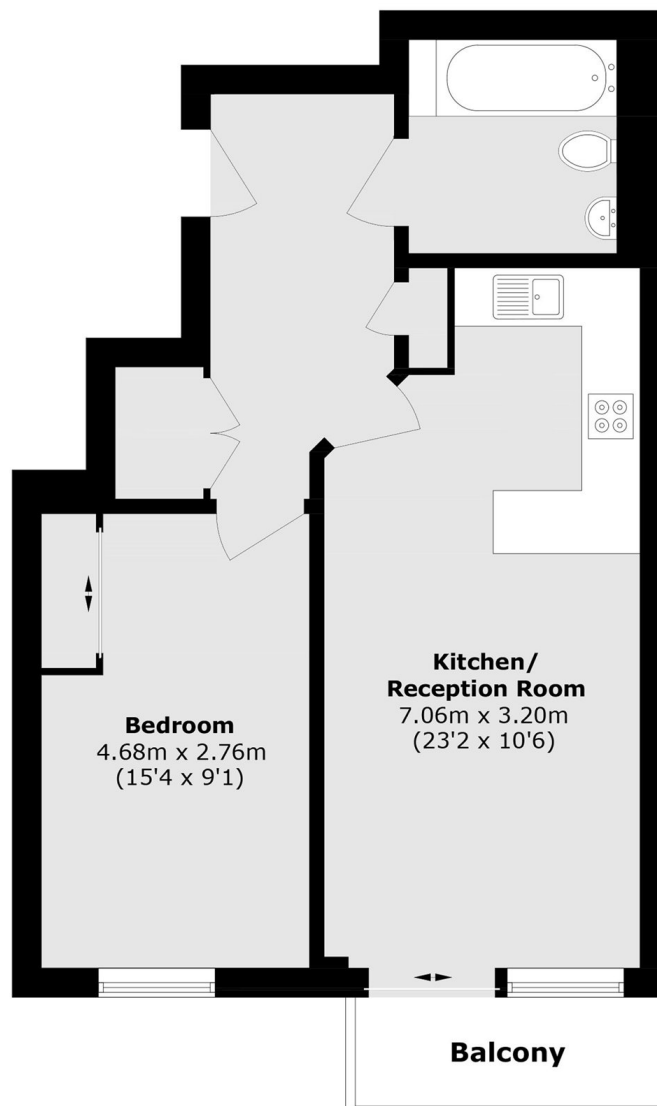
Stunning one bedroom apartment situated in a sought after development with 24 hour concierge service. The property benefits from open plan kitchen living area, modern bathroom with ample storage throughout.

Under three quarters of a mile from East Acton (Central line) and Acton Central (Overground) stations. Buses serving Ealing and Shepherd's Bush are close by.

Features

- One Double Bedroom
- Large Reception Room
- Open Plan Kitchen
- 24 Hour Concierge
- Gated Development
- Communal Gardens

Bromyard Avenue, London, W3



Total area (approx.): 49.8 sq. m (536.0 sq. ft)

Balcony area (approx.): 3.5 sq. m (37.6 sq. ft)