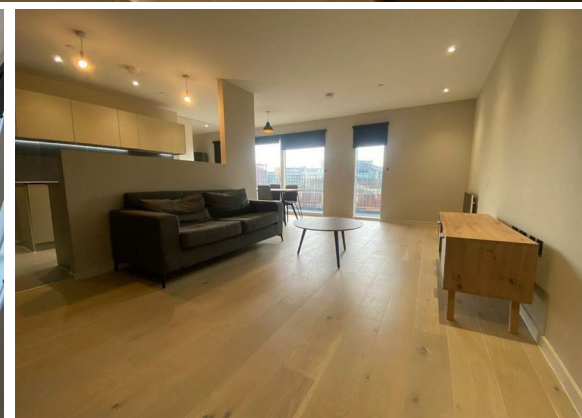




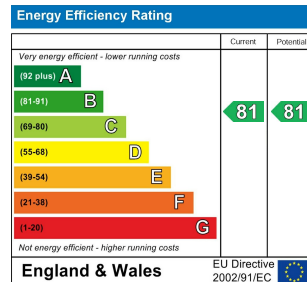
2 Bed  
Apartment  
located in

£1,400 PCM



 **NPP**  
RESIDENTIAL

EPC Rating: B  
Council Tax Band: D



## DIRECTIONS

## CONTACT

22 Lloyd Street  
Manchester  
M2 5WA

E: [info@nppresidential.co.uk](mailto:info@nppresidential.co.uk)  
T: 0161 639 0059  
<https://nppresidential.co.uk/>

