



The Grange, SE1

£750,000

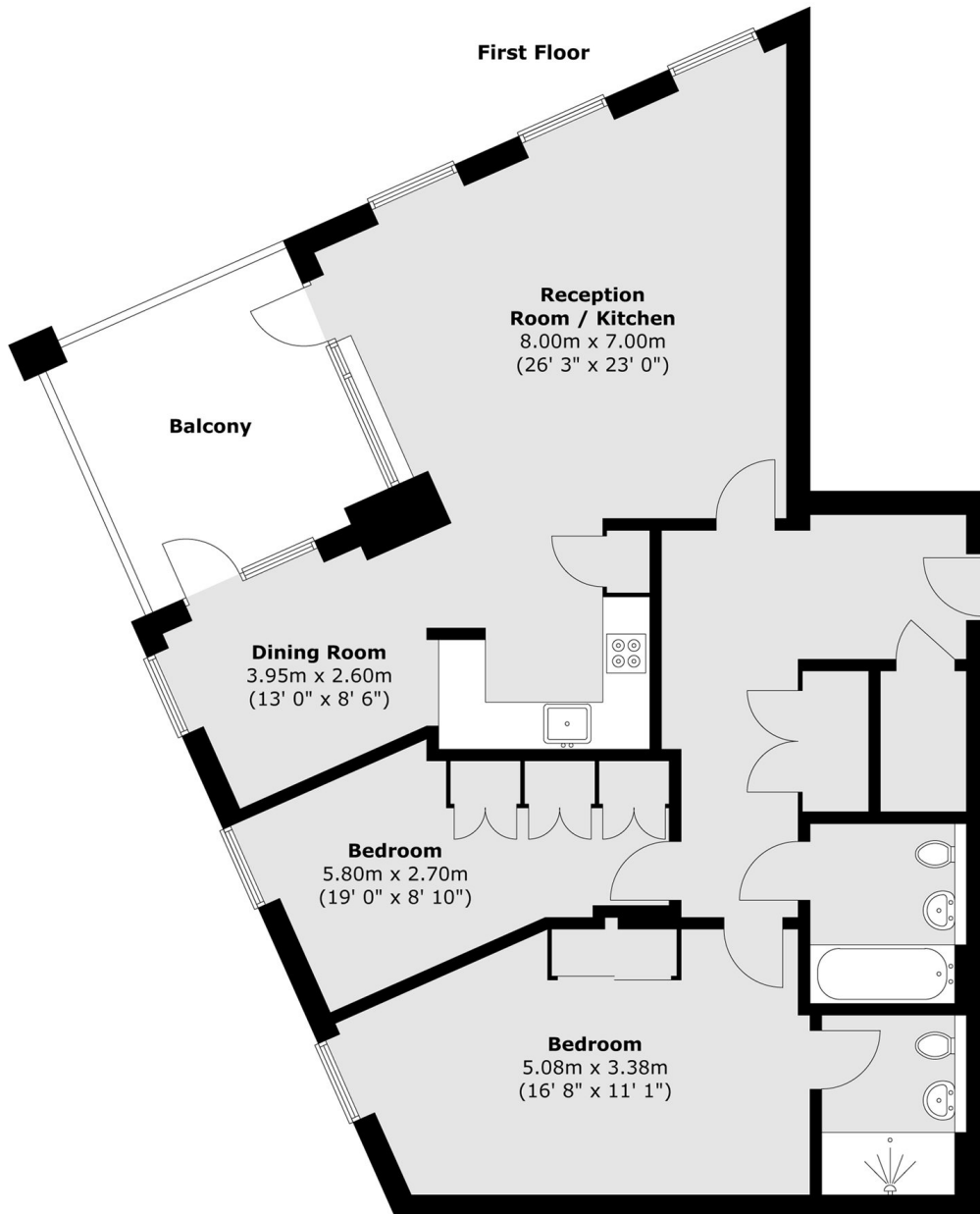
Arranged over 1,100sqft, this two double bedroom flat is in stunning condition and boasts two modern bathrooms, a huge open plan kitchen living space, private balcony, ample storage, secure parking space, communal gardens & concierge.

Corio House is moments from the vibrant Maltby Street Market and Bermondsey Street and is surrounded by artisan shops, cafés and delis. Bermondsey station is only 0.6 miles away and London Bridge is 0.8 miles away.

Features

- Two Double Bedrooms
- Two Bathrooms
- Immaculate Condition
- Secure Parking with EV Charger
- Concierge Facilities
- Communal Gardens

The Grange, London, SE1



Total area (approx.) : 103.3 sq. m (1112 sq. ft)
Total balcony area (approx.) : 10.2 sq. m (110 sq. ft)

Dexters

Canada Water
Montreal House
Surrey Quays Road
London
Sales
020 7650 5144

Energy Rating: B. We aim to make our particulars both accurate and reliable. However they are not guaranteed; nor do they form part of an offer or contract. If you require clarification on any points then please contact us, especially if you're traveling some distance to view. Please note that appliances and heating systems have not been tested and therefore no warranties can be given as to their good working order.

 **RICS** | Regulated
Estate Agent
and Letting Agent

[dexters.co.uk](https://www.dexters.co.uk)