



GARWAY ROAD, W2

£577 per week (£2,383 per month)

Smart first-floor apartment set within an attractive period building on one of Bayswater's charming tree-lined streets.

First floor
Modern finish
Double bedroom

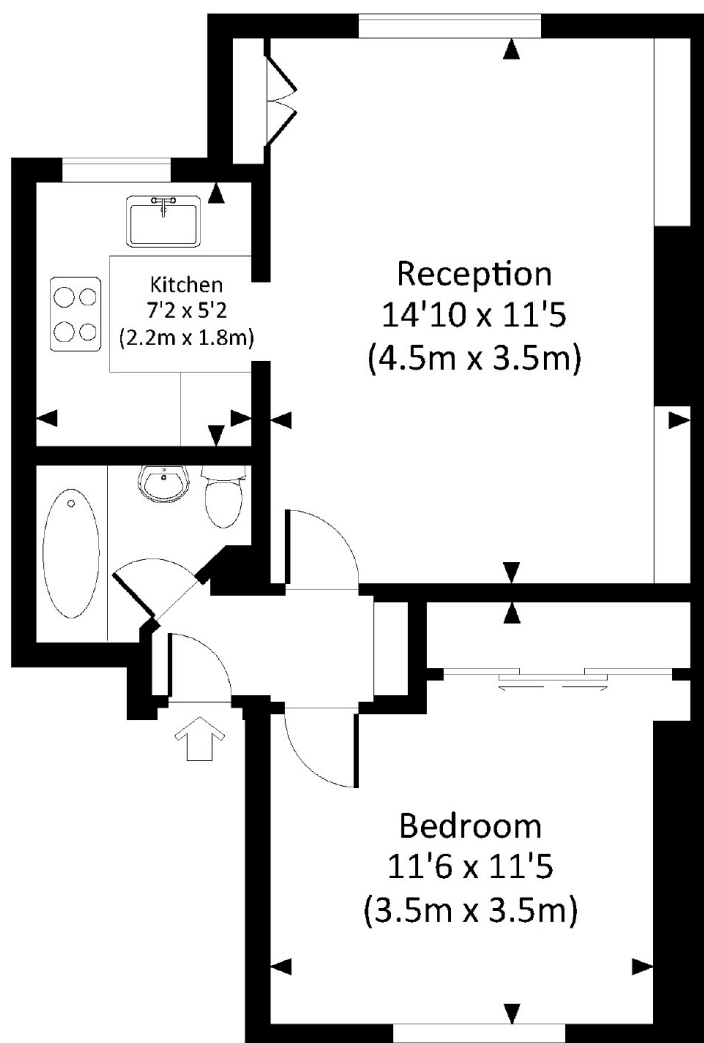
Built in storage
Period conversion
Period features

STEP INSIDE GARWAY ROAD

GARWAY ROAD, W2

Approx. gross internal area

395 Sq.Ft. / 36.7 Sq.M.



FIRST FLOOR



All measurements have been made in accordance with RICS Code of Measuring Practice which are approximate only and only for illustrative purposes. For the avoidance of doubt, Dowling Jones Design shall not be liable for any reliance on these measurements. © 2016 www.dowlingjones.com 020 7510 9993

Notting Hill
020 7313 6910

Energy Rating: D We aim to make our particulars both accurate and reliable. However, they are not guaranteed; nor do they form part of an offer or contract. If you require clarification on any points then please contact us, especially if you're traveling some distance to view. Please note that appliances and heating systems have not been tested and therefore no warranties can be given as to their good working order

MARSH &
PARSONS