



Offenham Road, SW9

£498,000

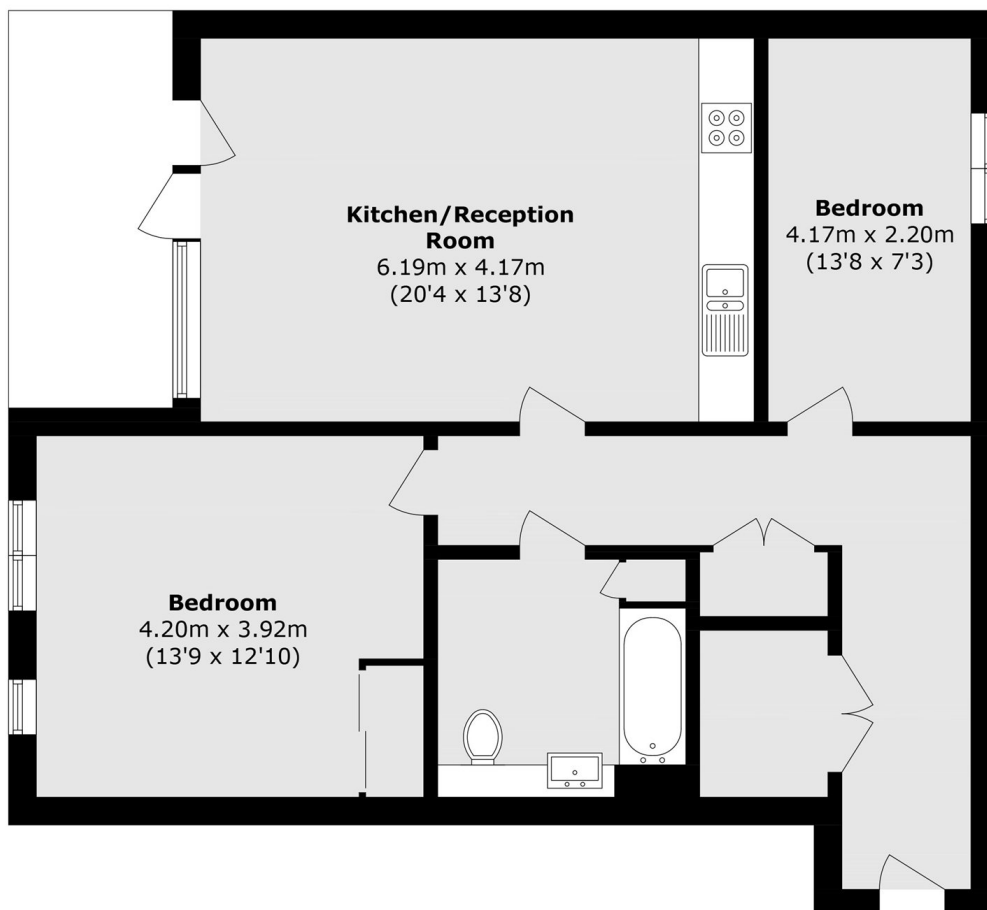
A spacious two bedroom apartment at over 834sq.ft in great condition throughout. The property benefits from a well proportioned living room offering space for both living and dining areas and direct access onto a terrace. There is a stylish fitted kitchen, a family bathroom and good storage throughout the property. Sold with no onward chain.

The apartment is located in the Oval Quarter, which is quietly tucked away within a short walk of Oval, Stockwell and Brixton tube stations. Perfect for the busy commuter, there is great access to an extensive range of public transport, including both the Victoria and Northern Lines and numerous bus routes. The property is also close to several parks including Kennington Park and Myatt's Fields Park

Features

- Two Bedrooms
- Terrace
- Healthy Lease
- Great Condition
- Excellent Location
- Security Entry Phone

Offenham Road, London, SW9



Total area (approx.): 77.5 sq. m (834.2 sq. ft)