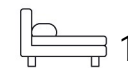


Living  
made  
better

Heron Place  
Silvertown, E16 2FJ



£1,800 PCM

# Heron Place, Silvertown, E16 2FJ

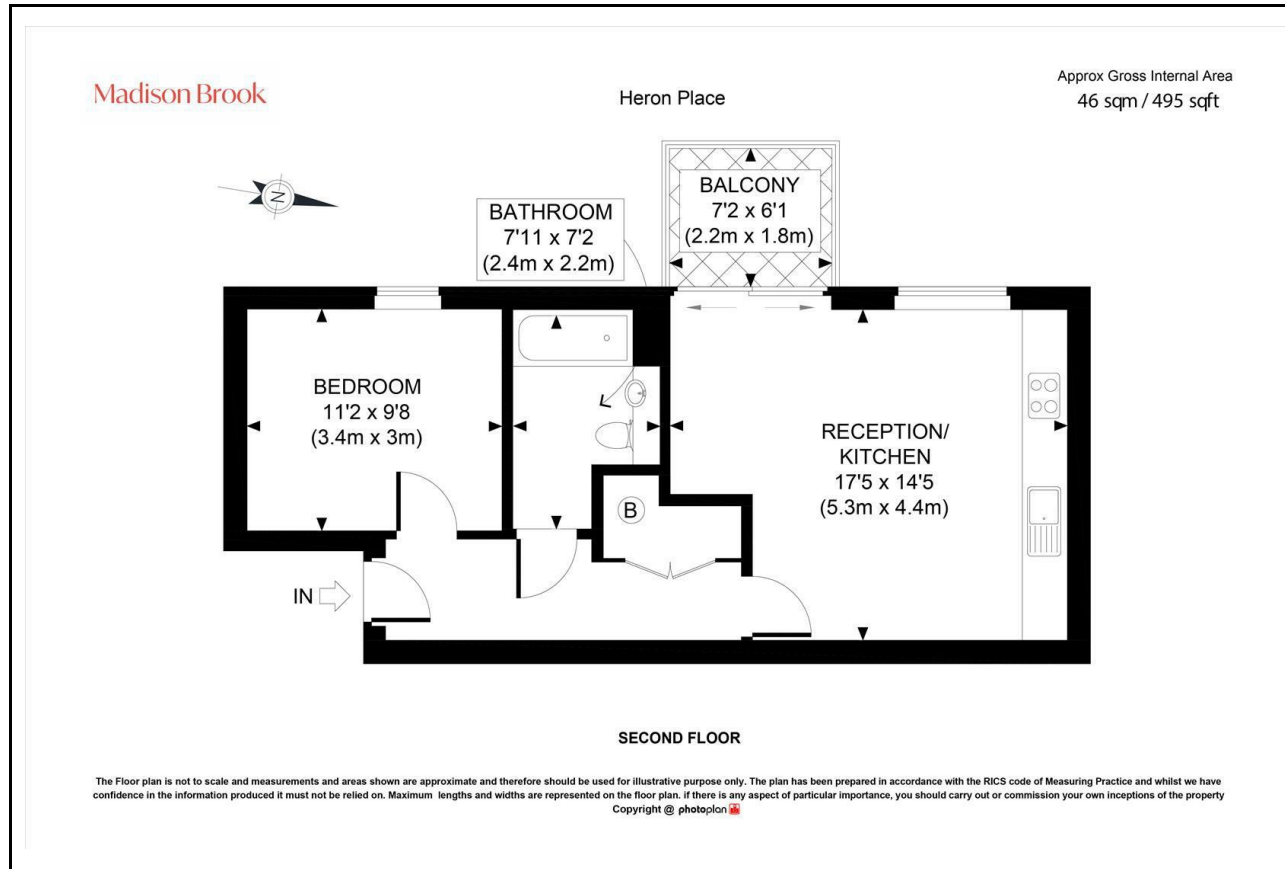
Madison Brook

## Property Summary

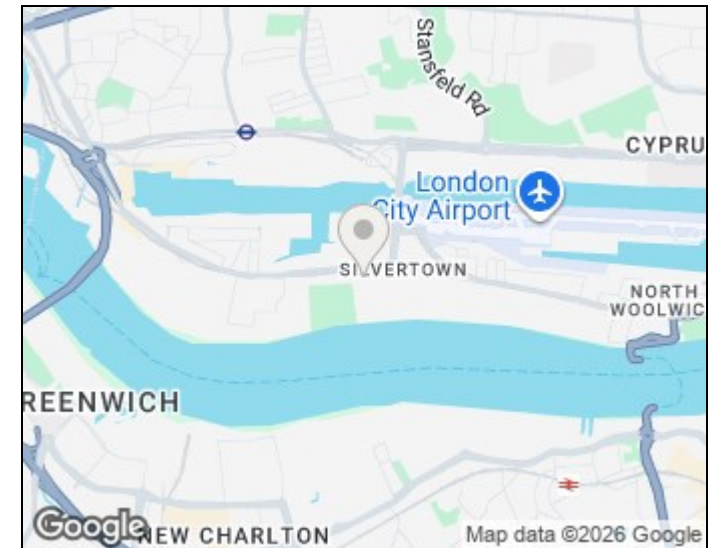
A bright and modern one-bedroom apartment in Waterside Park, Silvertown, offering approx. 538 sq ft of stylish living space. This second-floor home features a spacious open-plan kitchen/reception with integrated appliances, leading onto a generous private balcony with views over Barrier Park. The double bedroom and modern bathroom are both well-sized and presented in excellent condition.

Residents benefit from a 24-hour concierge, onsite gym, and proximity to the River Thames, Pontoon Dock DLR, and Canary Wharf.

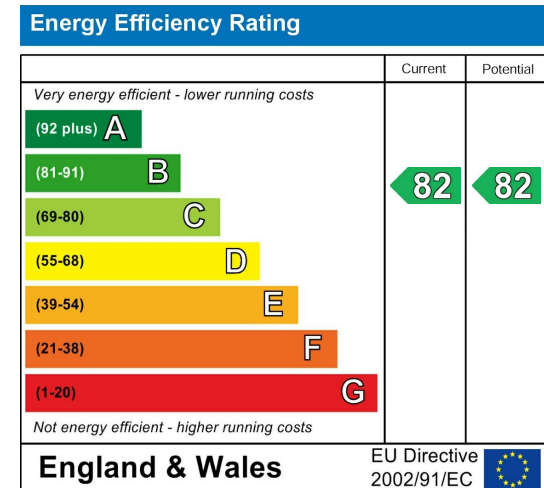
## Floorplan



## Area Map



## Energy Efficiency Graph



These particulars, whilst believed to be accurate are set out as a general outline only for guidance and do not constitute any part of an offer or contract. Intending purchasers should not rely on them as statements of representation of fact, but must satisfy themselves by inspection or otherwise as to their accuracy. No person in this firm's employment has the authority to make or give any representation or warranty in respect of the property.

Unit B 20 Western Gateway, Royal Victoria  
Dock, London, E16 1BS  
Tel: 020 3946 6000 Email:  
docklands@madisonbrook.com  
<https://madisonbrook.com/>