



**Railton Road, Herne Hill, SE24**

5 bedroom house for sale

**£1,250,000**

Freehold

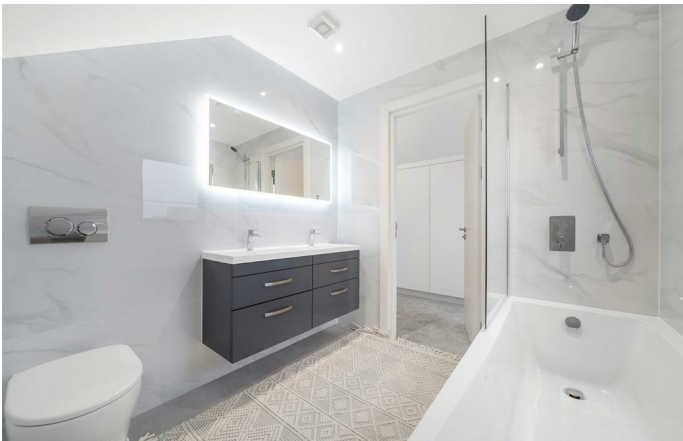
## Property Details

An exceptional five double bedroom, three bathroom new-build house with a private garden, forming part of The Poet's Corner Collection—an exclusive development of just five luxury homes in a prime Herne Hill location. Thoughtfully designed to combine timeless elegance with modern functionality, this impressive property benefits from a 10-year build warranty. A bright reception room greets you on entry, featuring high ceilings, a bay window, and herringbone flooring with underfloor heating flowing seamlessly through to the rear. The expansive dine-in kitchen is a striking entertaining space, complete with Bosch appliances, quartz worktops, and bi-fold doors opening onto a landscaped private garden. Arranged over three further floors, four double bedrooms and an additional reception offer flexibility for families, complemented by three beautifully finished bathrooms. The top floor hosts a luxurious principal suite with a dressing area and indulgent en-suite. Close to Brockwell Park, sought-after schools, and excellent transport links, this refined home perfectly balances luxury living with everyday convenience.

## Features

- Four double bedrooms
- Three bathrooms plus WC
- Private garden
- Principal suite with dressing area and en-suite
- High-specification new build house
- Just shy of 1,600 square feet
- Desirable location
- Short walk to Brixton, Herne Hill and Brockwell Park
- Freehold
- 10 year build warranty

Council tax band      EPC rating (0)

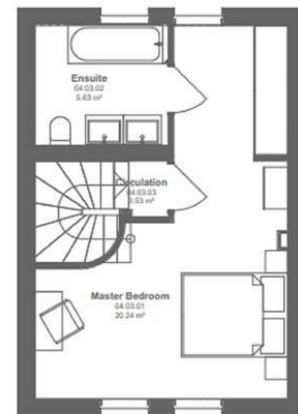
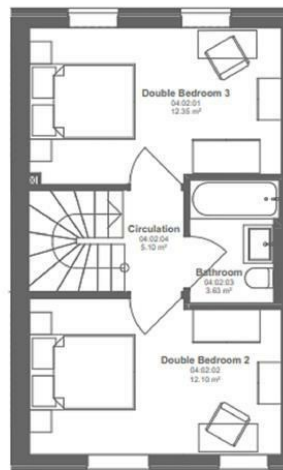
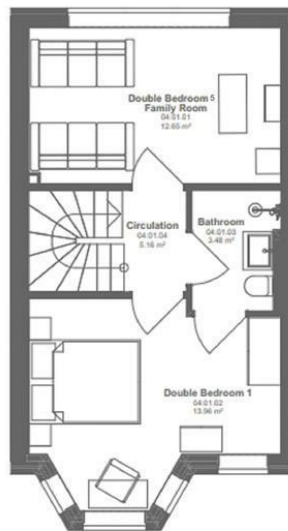
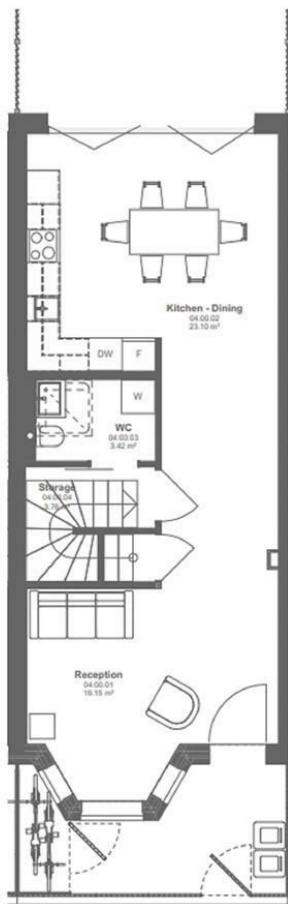
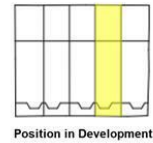




Railton Road, Herne Hill, SE24

**Railton Road, SE24**  
**5 Bedroom House**

APPROXIMATE GROSS INTERNAL AREA: 1592 SQ FT / 148 SQ M



While we try our very best, floor plans are produced as a guide only and we take no responsibility for the precise accuracy with which any property is represented.

Railton Road, Herne Hill, SE24

