



Merton Road, SW18

£385,000

Dexters



Merton Road, SW18

A beautifully presented one bedroom ground floor garden flat, offering well-balanced living space and a private rear garden with a useful garden studio/shed. The property features a bright reception room, separate fitted kitchen with wooden worktops, spacious double bedroom with bay window and a modern bathroom. Finished in neutral tones throughout, the flat is ready to move straight into and benefits from excellent natural light.

Merton Road is ideally positioned for the shops, cafés and restaurants of Wandsworth Town, including the Southside Shopping Centre, while the green open spaces of King George's Park and Wandsworth Park are both nearby. Excellent transport links are close at hand, with Wandsworth Town Station providing direct services into London Waterloo, alongside numerous local bus routes and easy access to Clapham Junction and East Putney Underground Station.

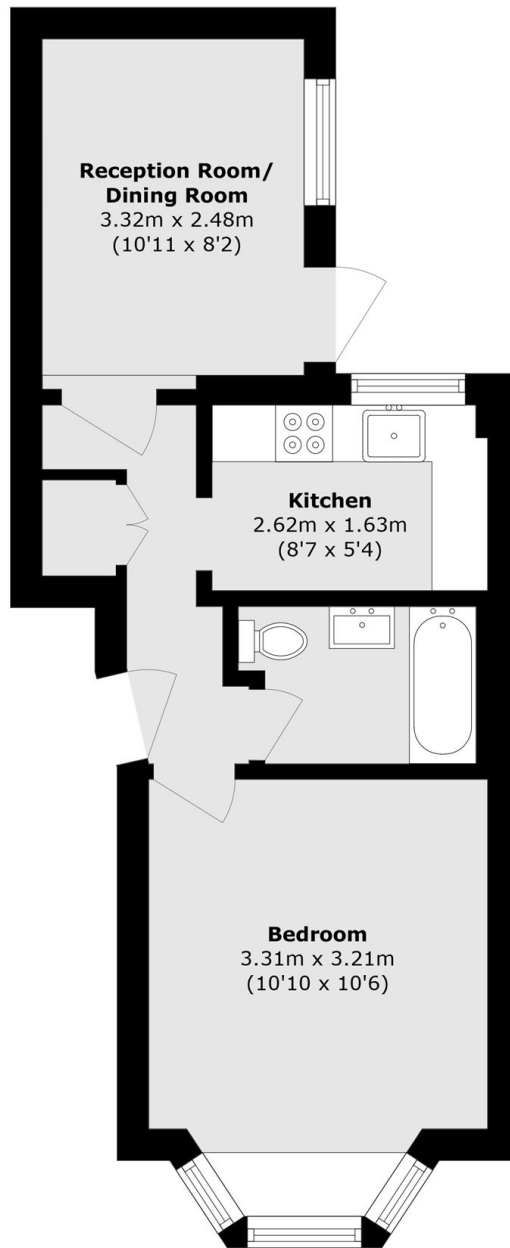
Features

- Chain Free
- Private Garden
- One Bedroom
- One Bathroom
- Period Conversion
- Low Service Charge





Merton Road, London, SW18



Total area (approx.): 33.9 sq. m (364.8 sq. ft)