



Kilburn Park Road, NW6

£500,000

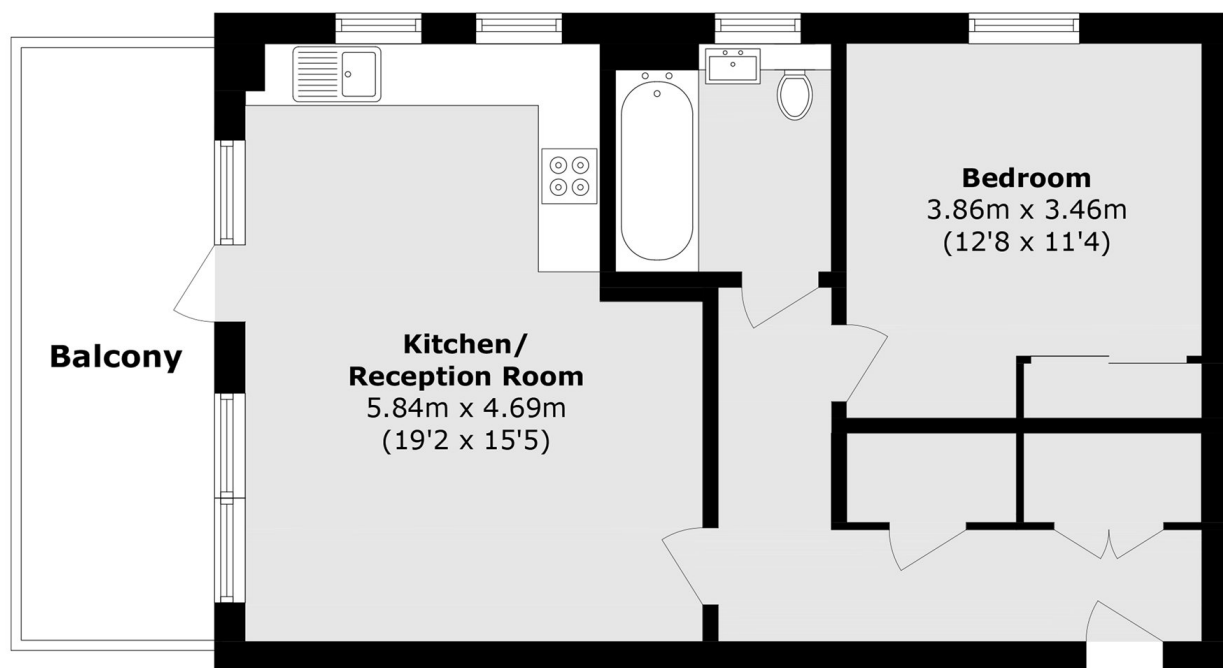
A modern, well-presented third floor flat set in a purpose-built block with lift access. This stunning property features ample storage and comes complete with a sizable double bedroom, open plan kitchen with fully integrated Bosch appliances and access to a west-facing balcony. This flat is being offered chain free.

Bannister House is perfectly situated for convenient access to Paddington Recreation Ground and the amenities of Elgin Avenue and Kilburn High Road. This location offers the serene ambiance of Maida Vale and Little Venice, along with the vibrant energy of Kilburn Park and Queens Park.

Features

- Modern Purpose-Built Block
- Third Floor Flat
- One Double Bedroom
- Open Plan Kitchen/Reception
- Ample Storage
- Chain Free

Kilburn Park Road, London, NW6



Third Floor

Total area (approx.): 58.0 sq. m (624.3 sq. ft)
Balcony area (approx.): 11.2 sq. m (120.5 sq. ft)