



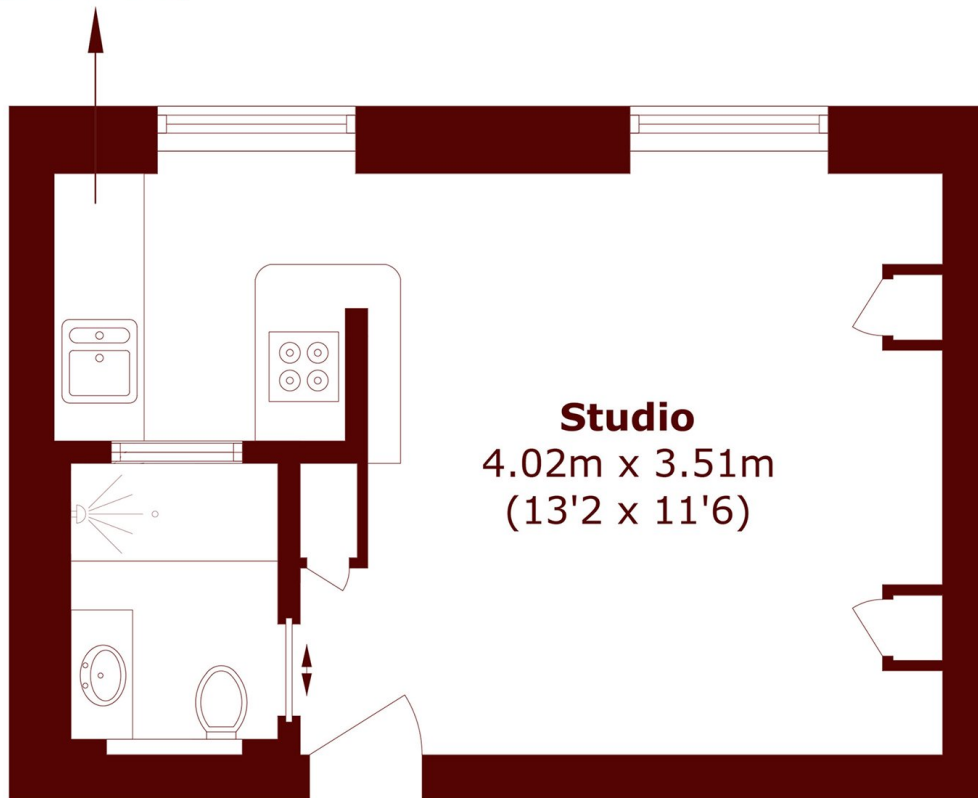
Colville Gardens, W11

£325,000



- Gated Residential Development
- Well Presented Studio Flat
- Recently Refurbished
- Communal Garden
- Third Floor
- Lift

Kitchen
2.34m x 1.83m
(7'8 x 6'0)



Studio
4.02m x 3.51m
(13'2 x 11'6)

Third Floor

Total area (approx.): 23.7 sq. m (255.1 sq. ft)

Marsh & Parsons Notting Hill

2-6 Kensington Park Road,
London, W11 3BU
020 7313 2890