



## 3 Bargate, Richmond

Offers in the Region of £220,000

Located a short walk from the town centre, on the cobbled street of Bargate, this quaint Grade II Listed two bedroomed cottage is brimming with character and will appeal to a range of Buyers. To the ground floor there is a living room with log burning stove, and a dining kitchen, whilst to the first floor are two bedrooms and the shower room. Externally there is a tiered cottage garden which contains mature shrubbery and provides three seating areas and a store. Offered to the market CHAIN FREE, an early inspection is strongly advised!

21 Market Place, Richmond, North Yorkshire, DL10 4QG

## 3 Bargate, Richmond

Located a short walk from the town centre, on the cobbled street of Bargate, this quaint Grade II Listed two bedroomed cottage is brimming with character and will appeal to a range of Buyers. To the ground floor there is a living room with log burning stove, and a dining kitchen, whilst to the first floor are two bedrooms and the shower room. Externally there is a tiered cottage garden which contains mature shrubbery and provides three seating areas and a store. Offered to the market CHAIN FREE, an early inspection is strongly advised!

### **Entrance Hallway:**

Accessed through a timber door, the welcoming hallway provides space for coats and shoes and leads to the living room.

### **Living Room:**

4.77 m x 4.01m

The living room is brimming with character with beamed ceilings and a bay window, providing a cosy space perfect for relaxing in front of the log burning stove. With a TV point, radiator, steps to the kitchen and stairs to the first floor.



### **Dining Kitchen:**

3.75m x 3.44m

With a range of wooden base and wall units, a black marble style worktop and yellow tiles.



Integrated is an electric oven and a gas hob, space for a washing machine and under counter fridge or freezer and a white sink with drainer and silver mixer tap.



With space for dining and a sliding sash window giving a pleasant view of the rear garden.

The Worcester Bosch Combi Boiler is located in the kitchen, a door leads to the rear garden.

### **Bedroom:**

4.01m x 3.91m

A double bedroom with a radiator, a window to the front of the property and a fireplace.



**Landing:**

With loft access.

**Bedroom:**

3.54m x 2.47m

A double bedroom with beamed ceilings, a window to the rear of the property and a radiator.



A store is built into the stone wall, providing useful storage space for gardening items or bikes and there is an outside tap.

**Shower Room:**

Comprising a wc, wash hand basin and a cubicle with a Mira mixer shower.



There is shared access to the side of the property.

The property is Grade II Listed.

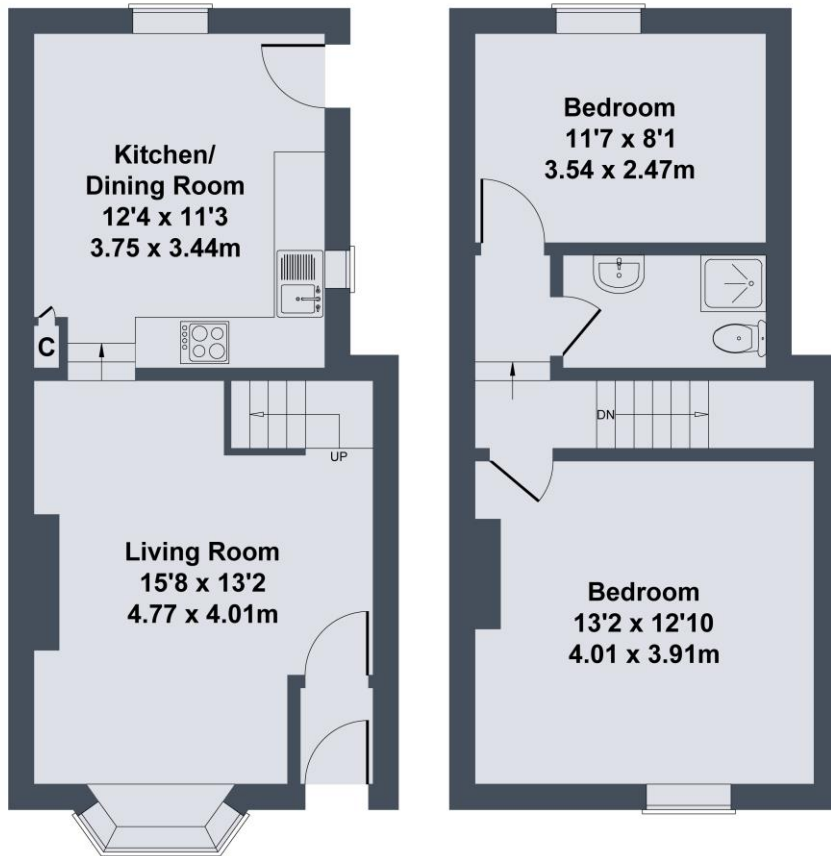
The Postcode is DL10 4QY, the Council Tax Band is A.

**External:**

The rear cottage style garden is tiered, the two lower areas are paved providing ideal spaces for barbeques whilst the top of the garden provides a lawned area surrounded by mature shrubbery.



**3 Bargate, Richmond, DL10 4QY**



**GROUND FLOOR**

**FIRST FLOOR**

SKETCH PLAN FOR ILLUSTRATIVE PURPOSES ONLY

All measurements walls, doors, windows, fittings and appliances, their sizes and locations, are approximate only. They cannot be regarded as being a representation by the seller, nor their agent.