



Hawker Drive, Addlestone, KT15 2FA





Offered to the market with no onward chain is this beautifully presented two double bedroom apartment with balcony and allocated parking space. Built by Redrow Homes, this wonderful third floor property offers spacious accommodation throughout. Comprising of an open plan living area with fully fitted kitchen, lounge area with French doors out to the balcony, the main double bedroom with ensuite shower room, second double bedroom and stylish family bathroom. Further benefits to the property include floor to ceiling windows letting light stream through, a long lease, communal green spaces, remainder of the NHBC guarantee and secure door entry system. Ideally situated, the property is within an easy walk of Weybridge and Addlestone town centre amenities which include a gym, cinema, supermarkets and restaurants. The railway station offers a short easy commute into London, whilst the M25 is less than 2 miles drive.

Leasehold





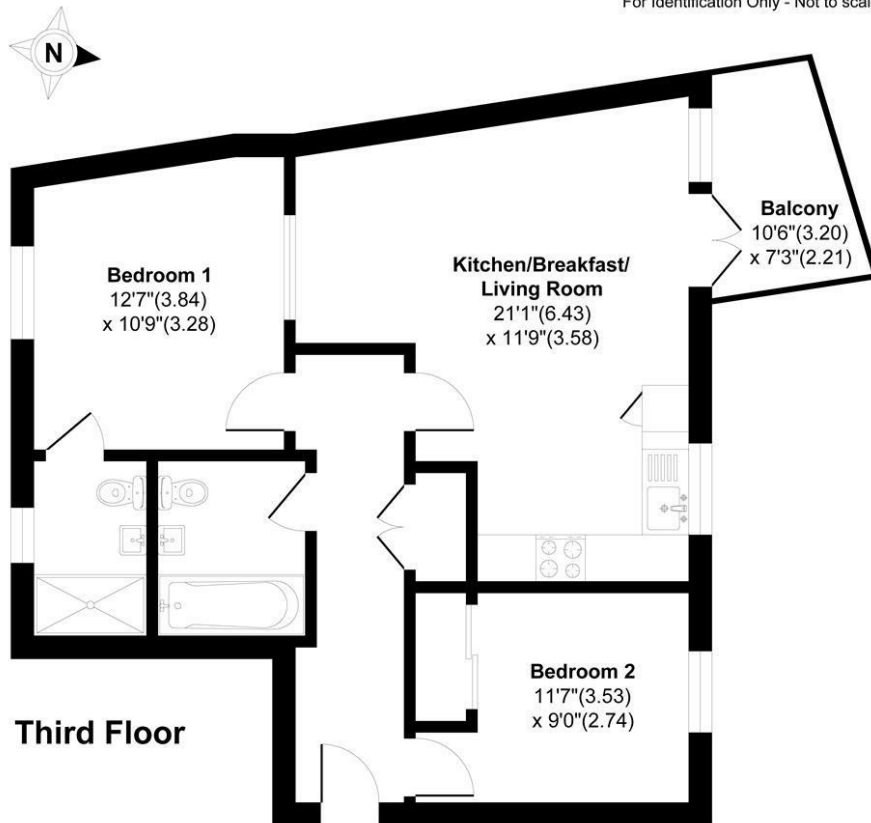
EPC: B84



Beaumont Apartments, Hawker Drive, Addlestone, KT15

Approximate Area = 717 sq ft / 66.6 sq m

For Identification Only - Not to scale



Floor plan Produced in accordance with RICS Property Measurement 2nd Edition, Incorporating International Property Measurement Standards (IPMS2 Residential). Produced for Grants Homes Agents.

