
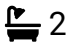



Green Street, Shipley

Offers Over £700,000

 4  2  2

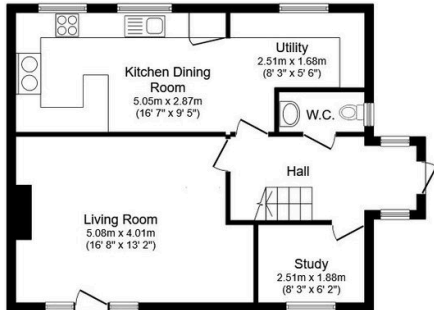


An exceptional Family Home overlooking the Knepp Estate, boasting beautifully presented Accomodation Across Three Floors, a generous Garden with Spectacular Views and Potential to further improve.

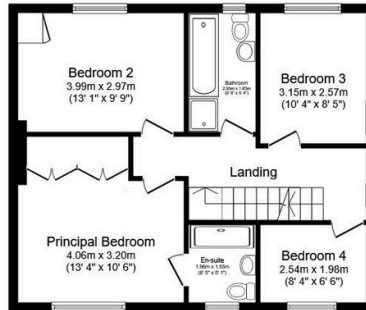
Tenure: Freehold
Council Tax: Band E
EPC Rating: E

Key Features

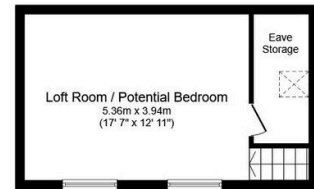
- Watch Our Video Tour
- Accommodation Across Three Floors
- Four Bedrooms (Three Doubles)
- Principal Bedroom With En Suite
- Attractive Semi Rural Location
- Extended Family Home
- Far Reaching Views Across The Knepp Estate
- 17'7 x 12'11 Loft Room With Potential
- Generous Rear Garden
- Utility Area & WC



Ground Floor
Floor area 60.4 sq.m. (651 sq.ft.)



First Floor
Floor area 58.5 sq.m. (630 sq.ft.)



Second Floor
Floor area 27.4 sq.m. (295 sq.ft.)

Total floor area: 146.3 sq.m. (1,575 sq.ft.)

This floor plan is for illustrative purposes only. It is not drawn to scale. Any measurements, floor areas (including any total floor area), openings and orientations are approximate. No details are guaranteed, they cannot be relied upon for any purpose and do not form any part of any agreement. No liability is taken for any error, omission or misstatement. A party must rely upon its own inspection(s). Powered by www.Propertybox.io