



Guide Price

£650,000

Freehold

5x  2x  3x 

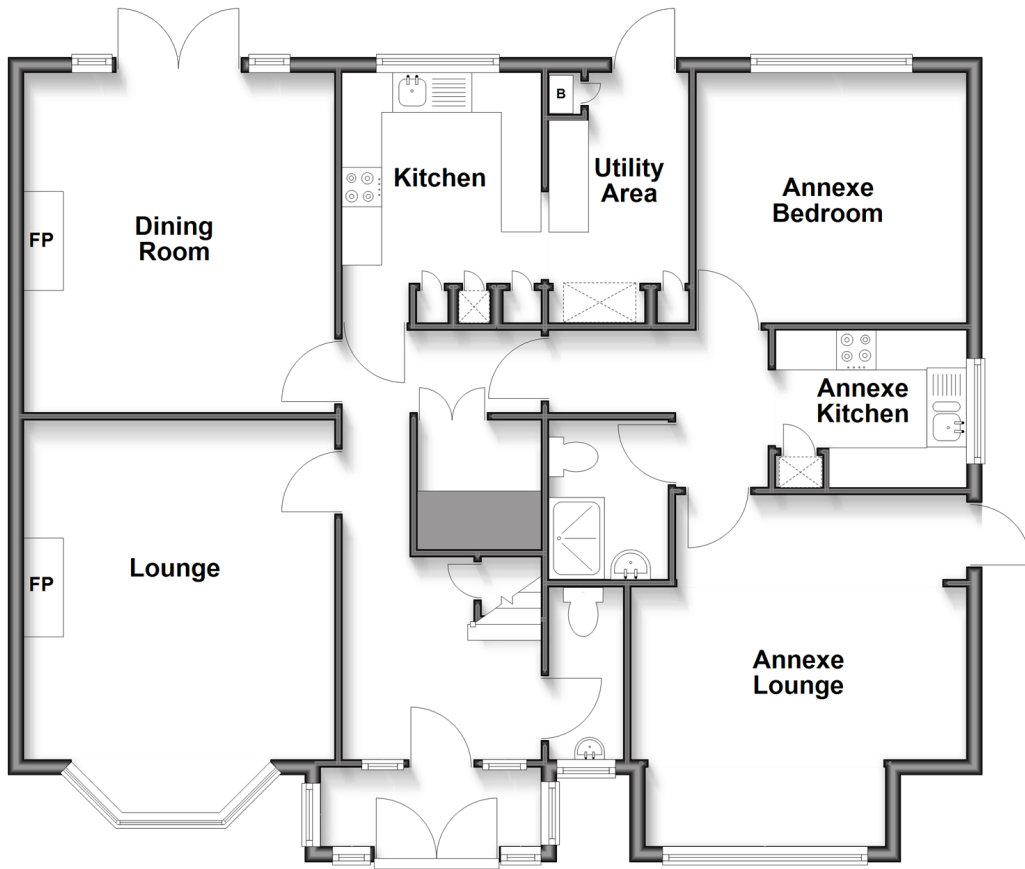
**Park Crescent, Chatham,
Kent, ME4**

OVER 60?

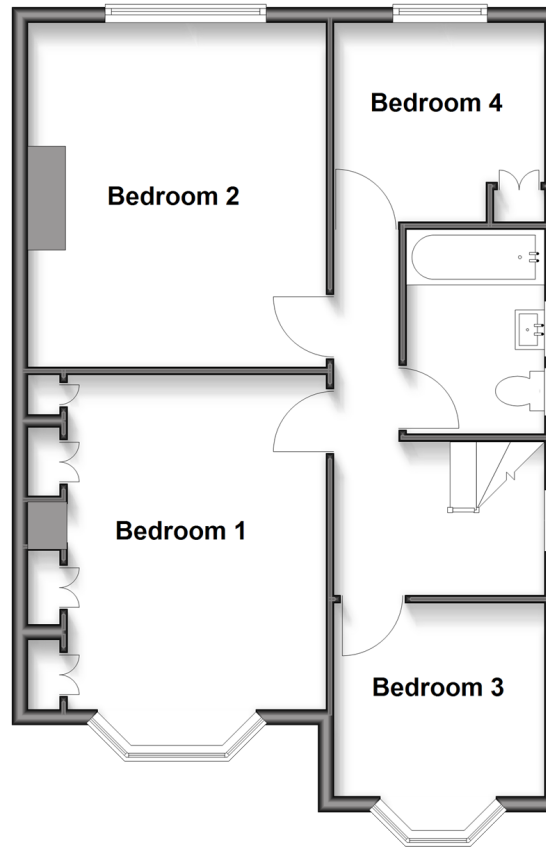
Secure this property
for up to **59% less!**

Wards
Helping you move forwards

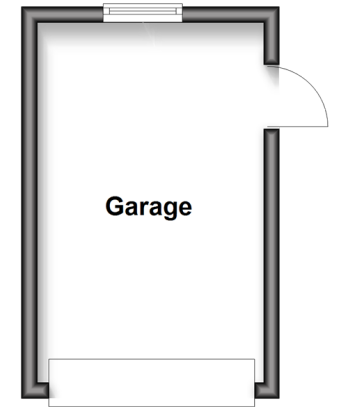
Ground Floor
Approx. 110.1 sq. metres (1184.6 sq. feet)



First Floor
Approx. 60.0 sq. metres (645.7 sq. feet)



Outbuilding
Approx. 13.0 sq. metres (140.2 sq. feet)



Accommodation

GROUND FLOOR

Entrance Porch
Hallway
Lounge: 17'1 x 12'10 (5.21m x 3.91m)
Dining Room: 13'10 x 12'0 (4.22m x 3.66m)
Kitchen: 14'10 x 10'9 (4.52m x 3.28m)
Cloakroom

FIRST FLOOR

Landing
Bedroom 1: 17'1 x 12'7 (5.21m x 3.84m)
Bedroom 2: 13'10 x 12'5 (4.22m x 3.79m)
Bedroom 3: 8'11 x 8'3 (2.72m x 2.52m)
Bedroom 4: 8'7 x 8'1 (2.62m x 2.47m)
Bathroom

ANNEXE

Annexe Lounge: 14'0 x 14'0 (4.27m x 4.27m)
Annexe Kitchen: 7'8 x 6'5 (2.34m x 1.96m)
Annexe Bedroom : 11'10 x 10'4 (3.61m x 3.15m)
Annexe Shower Room

OUTSIDE

Front Garden
Driveway
Rear Garden
Garage to Rear



Main features

- Beautiful 1930's, 4 bedroom semi-detached house with self contained annexe
- Flexible and versatile space to suit your family's needs
- Generous separate lounge, dining and extended kitchen
- Large driveway for multiple vehicles
- Highly sought after location, excellent for popular local schools



Nearest Schools

Primary Schools: New Horizons Children's Academy 0.1 miles, Balfour Junior School 0.7 miles, Phoenix Junior Academy 0.8 miles
Secondary Schools: Holcombe Grammar School 0.1 miles, Victory Academy 0.8 miles



Transport Information

Train Stations: Chatham 1.5 miles, Rochester 2.2 miles, Cuxton 2.7 miles



Address

Park Crescent, Chatham, Kent, ME4



Directions

For directions to this property please contact us.



Wards
Helping you move forwards

Call Chatham Branch 01634 841243 ■ wardsofkennt.co.uk



■ Through a Homewise Home For Life Plan people aged 60+ can secure this property for up to 59% less, by purchasing a Lifetime Lease



10431800/20260319/BC/BC