

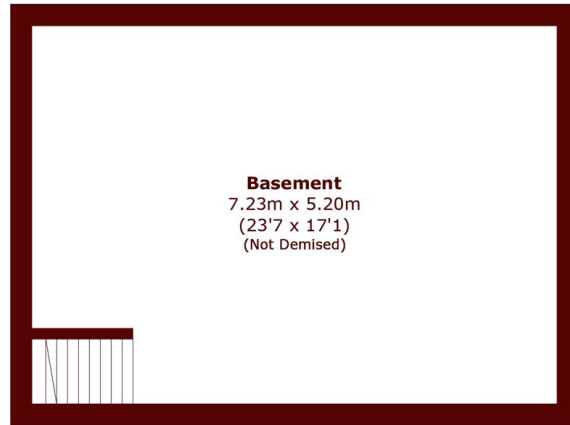


## Tabley Road, N7

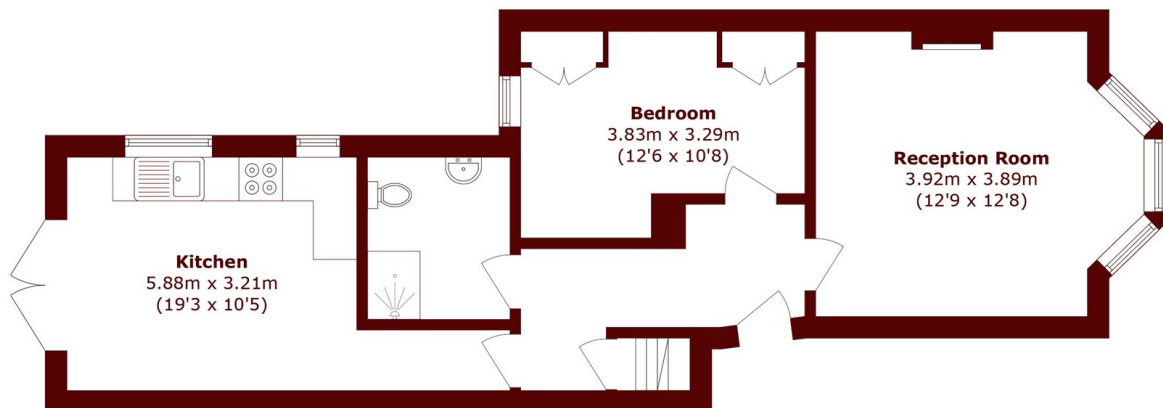
£550,000



- Private Rear Garden
- Ground Floor
- On Street Parking
- Period Conversion
- Spacious Living Room
- Low Service Charges



**Basement**



**Ground Floor**

Total area (approx.): 54.8 sq. m (589.9 sq. ft)  
(Excluding Eaves)  
Basement area (approx.): 37.6 sq. m (404.7 sq. ft)

**Marsh & Parsons Camden**

27 Parkway, London, NW1  
7PN  
020 7244 2200