



Fairmont Avenue, E14

£525,000

Set within a sought-after riverside development and offered to the market chain free, we are pleased to present this two-bedroom, two-bathroom apartment. Boasting uninterrupted river views towards the O2. This particular unit is one of the most desired layouts within the building. An all integrated kitchen space and a beautiful living space perfect for entertaining. The property includes multiple inbuilt storage units. Floor to ceiling windows throughout, allowing for an abundance of natural sunlight, access to a private balcony via the reception room, and 891 sq ft of internal living space. The property benefits from a secure entry phone system and a designated parking space.

New Providence Wharf is ideally situated for access to Canary Wharf (0.6 miles). Blackwall station is 0.3 miles away, offering easy access into The City and Canary Wharf. Christ street market is in good proximity (0.9 miles) offering an array of restaurants and other local amenities.

Features

- River Views
- Residents' Leisure Facilities
- Private Concierge
- Secure Development
- Parking Available
- Easy Access to Canary Wharf

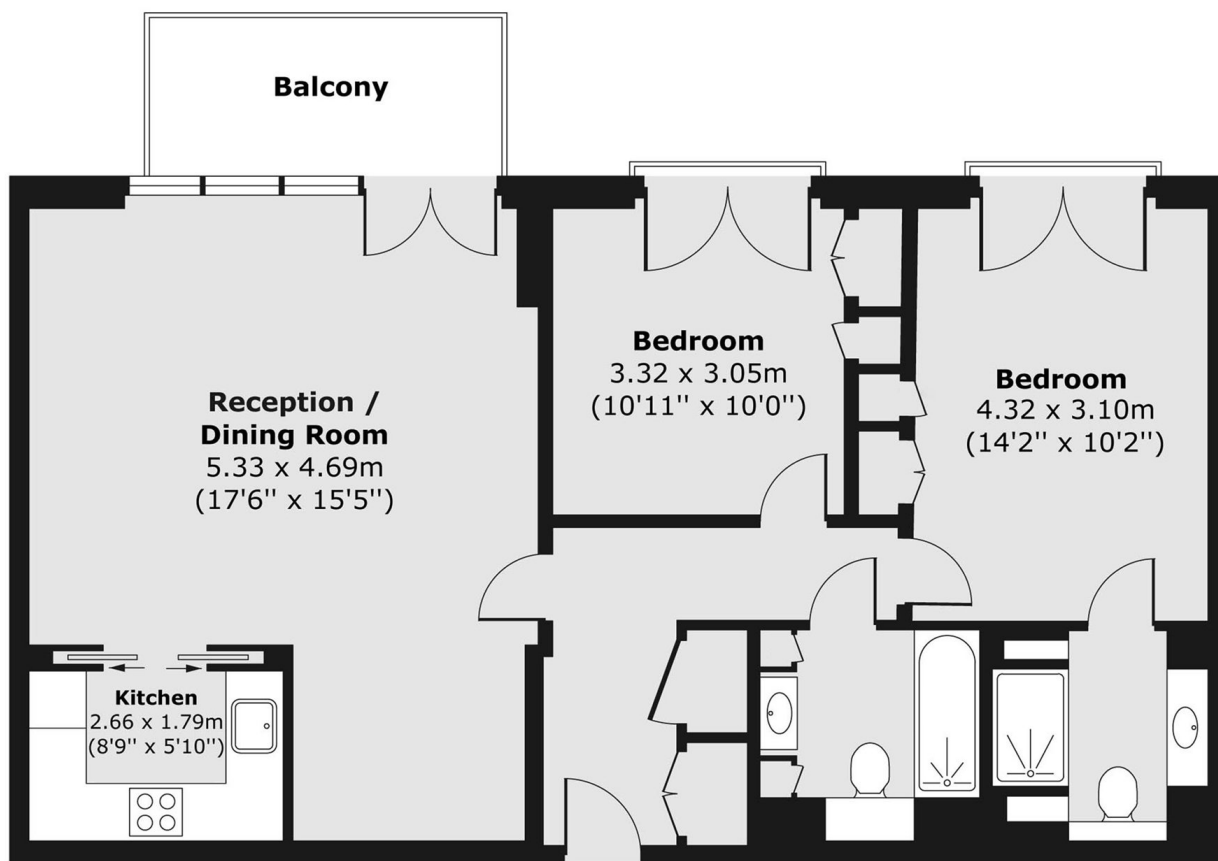


Fairmont Avenue, E14

Residents will also benefit from access to a private concierge, on-site security, a residents' gym and swimming pool, along with a range of additional local amenities.



Fairmont Avenue, London, E14



Fifth Floor

Total area (approx.) 82.79 sq. m (891 sq. ft)
Balcony area (approx.) 6.12 sq. m (66 sq. ft)