



CHI

THE OLD DAIRY
CHILLEY BARNS • TQ9 7QN



THE OLD DAIRY

GROUND FLOOR

Entrance Hallway | Bedroom 1 | Bedroom 2 | Bedroom 3 |
Bathroom

FIRST FLOOR

Open Plan Kitchen/Dining Room | Living
Room | Shower Room

EXTERNAL

Parking for 2 vehicles | Courtyard | Garden Laid To Lawn | Patio



“Charming barn conversion with three bedrooms, exposed beams, courtyard garden, and parking...”

Located in the sought-after Chilley hamlet, The Old Dairy is a beautifully converted property full of charm in idyllic surroundings.

- Full of character, including exposed wooden beams
- Three spacious bedrooms and bathroom on the ground floor
- Two designated parking spaces
- A short drive to Kingsbridge, Totnes, and Dartmouth
- No onward chain

The front door opens into a welcoming hallway, leading to the ground floor where three generous bedrooms and a family bathroom are arranged, offering comfortable accommodation.

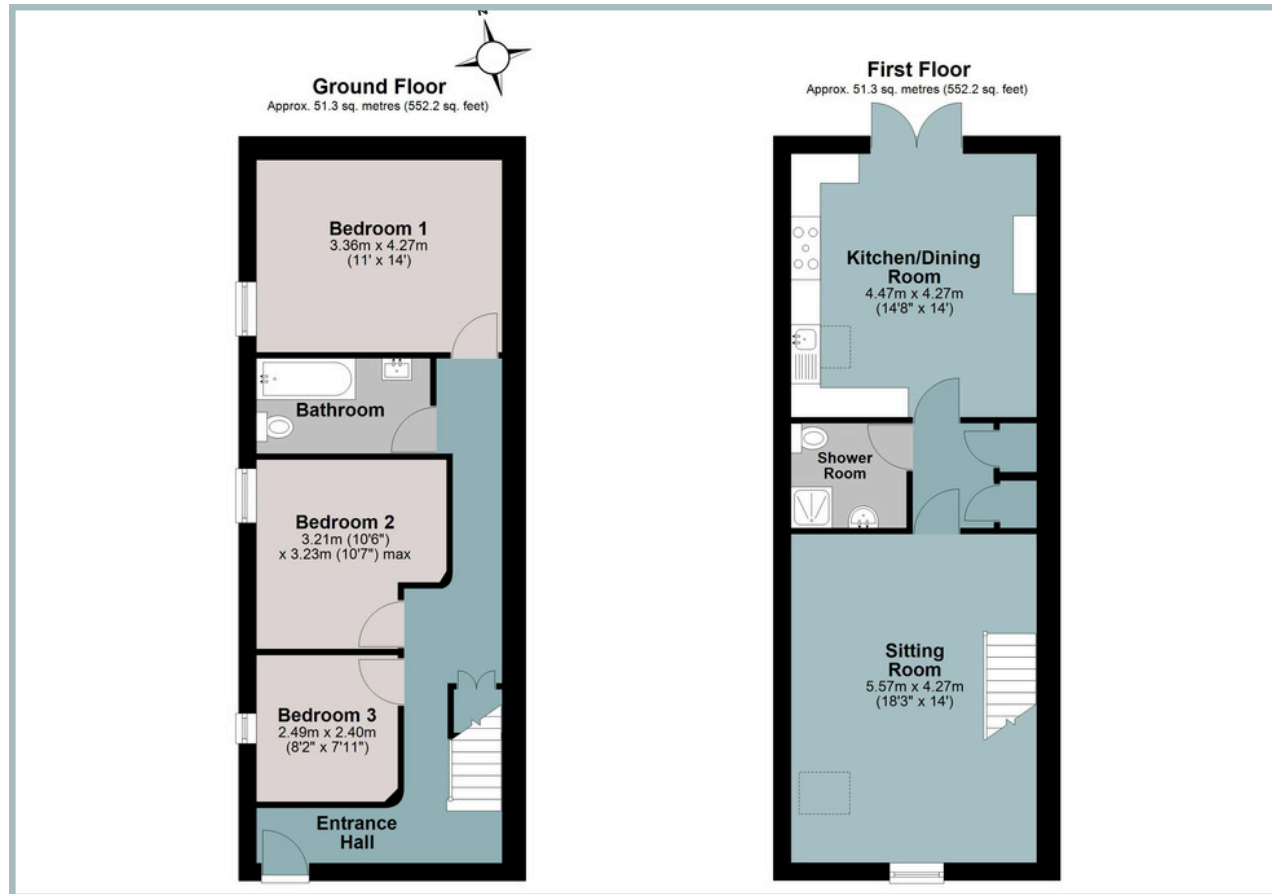
Upstairs, the living room features exposed wooden beams, creating a warm and inviting space. A shower room with built-in storage opposite is thoughtfully positioned between the living room and the kitchen.

The kitchen/dining room is further enhanced by exposed beams and opens directly onto a private courtyard garden, creating a seamless connection to the outdoors and a wonderfully tranquil setting. Externally, the property boasts a landscaped garden offering several areas for entertaining, including a decked seating area, a level lawn, a lower courtyard, and a pergola conveniently located just off the kitchen. The property also benefits from two designated parking spaces.

With its characterful features, practical layout, and convenient location, The Old Dairy provides a unique and appealing home in a picturesque setting.



TOTAL APPROXIMATE AREA: 102.6 SQ M 1104.5 SQ FT



IMPORTANT NOTICE: We would like to inform prospective purchasers that these sales particulars have been prepared as a general guide only. They are prepared and issued in good faith and are intended to give a fair description of the property, but do not constitute part of an offer or contract. Any description or information given should not be relied on as a statement or representation of fact that the property or its services are in good condition. Neither Charles Head, nor any of its employees, has any authority to make or give any representation or warranty whatsoever in relation to the property. Floorplans are for guidance purposes only and may not be to scale. The photographs show only certain parts and aspects of the property at the time they were taken. Any reference to alterations to, or use of, any part of the property is not a statement that any regulations or other consent has been obtained. . If there are any important matters likely to affect your decision to buy, please contact us before viewing the property. ALL STATEMENTS CONTAINED IN THESE PARTICULARS AS TO THIS PROPERTY ARE MADE WITHOUT RESPONSIBILITY ON THE PART OF CHARLES HEAD.



113 FORE ST, KINGSBRIDGE TQ7 1BG
kingsbridge@charleshead.co.uk
01548 852 352
www.charleshead.co.uk

Tenure: Freehold

Council Tax Band: C

Local Authority: South Hams District Council

Services: Mains electricity, private water and private drainage.
Gas central heating.

EPC: Current D (60) Potential C (76)

Viewings: Very strictly by appointment only

Location: Chilley is a conveniently located rural setting along the A381, forming part of a former farmstead now comprising a small collection of barn conversions. The location offers excellent access to the South Hams, with Kingsbridge, Totnes and Dartmouth all within a short drive.

Kingsbridge is a sought-after market town at the head of the estuary within the South Hams Area of Outstanding Natural Beauty. It offers a wide range of amenities including independent shops, restaurants, pubs, supermarkets, leisure facilities, medical services and highly regarded schools. The estuary provides opportunities for water sports and moorings, while beautiful beaches, coastal walks and nearby towns such as Salcombe and Totnes are easily accessible.

Directions: From Kingsbridge, follow the A381 towards Totnes. Shortly after passing The Mounts, Chilley will be found on the left-hand side, opposite the sign for The Cuttery House. Turn left into the track, bear right, then take the left turn signposted The Old Dairy Barn. The property will be found on the left-hand side.

What three words: ///jars.feed.rhino

Salcombe 11.8 miles - Totnes 8.3 miles (Railway link to London Paddington) - Dartmouth 9.2 miles