

Property ref: 181468

## Stirling House, Reading, RG1 2SU

£1,600 PCM

**HASLAM'S**  
Lettings



A well-presented two-bedroom apartment situated within the popular Stirling House development, ideally located within walking distance of Reading town centre, Reading Mainline Station and a wide range of local amenities.

Reading Borough Council tax band D.

Broadband/Mobile Info: Connections available. For an indication of specific speeds and supply of Broadband and Mobile, we advise applicants go to the Ofcom website Broadband and Mobile Coverage Checker.

**Available 01/08/2026**

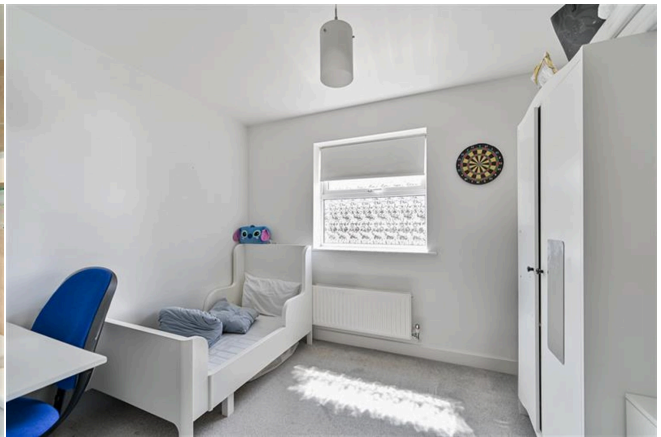
- Two double bedrooms; Electric heating
- Spacious living/dining room
- Modern fitted kitchen; Allocated parking
- Central Reading location
- Secure entry system; Furnished
- EPC rating D; Managed by HASLAM'S

\*Fees For Assured Periodic Tenancies: when you rent a property from us you will be required to pay a sum equivalent to one weeks' rent for a holding deposit. Upon successful application, this amount will be off set against your first months' rent. You will also be required to pay a security deposit equivalent to 5 weeks' rent which will be held and protected in line with Deposit legislation. For more information about our fees please visit: [www.haslams.net](http://www.haslams.net)  
Fees for all other tenancies (Non Housing Act Tenancies / Company Lets): when you rent a property from us we will charge you a one-off fee per property. This charge is the equivalent of 15 days of the monthly rental charge (+VAT) with a minimum fee of £450 (inc.VAT) up to a maximum of £650 (inc.VAT). Other fees may apply depending on your circumstances.

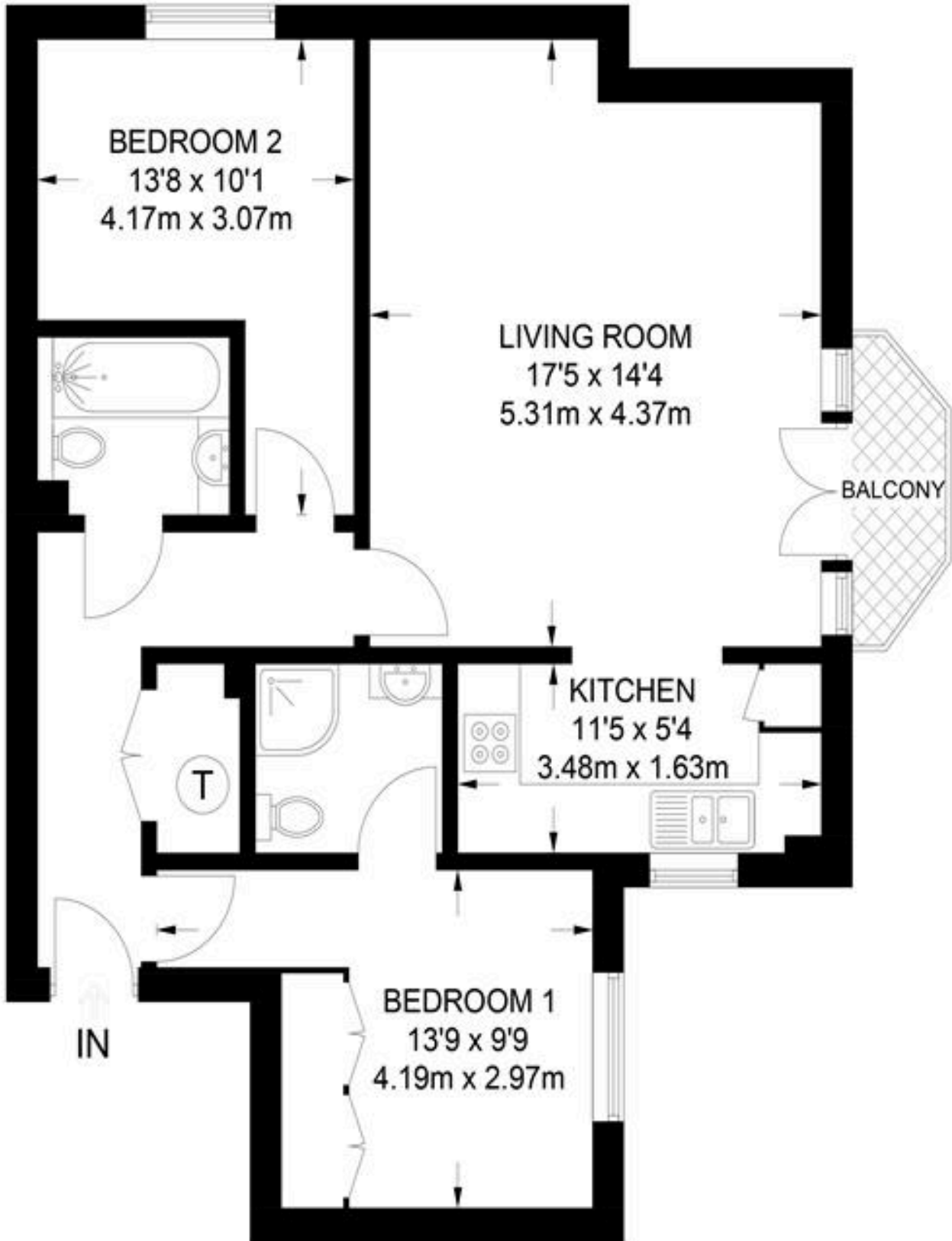
**0118 960 1055**

**[lettings@haslams.net](mailto:lettings@haslams.net) [www.haslams.net](http://www.haslams.net)**

**Haslams Estate Agents Ltd, 159 Friar Street, Reading, Berkshire, RG1 1HE**







## SECOND FLOOR

**APPROXIMATE GROSS INTERNAL AREA  
693 SQ FT / 64.4 SQ M**

This plan has been drawn for illustrative and identification purposes only.