



**Guide Price**  
**£325,000**

**Freehold**

2x  1x  1x 

**The Stade, Folkestone,  
Kent, CT19**

**OVER 60?**

Secure this property  
for up to **59% less!**

*Wards*  
Helping you move forwards



## Main features

- Highly sought after location
- Private outdoor space
- Moments from the sea, Harbour Arm and vibrant Creative Quarter
- Excellent access to London, Canterbury and Ashford via high speed rail links
- Perfect as a permanent residence, holiday retreat or investment

## Accommodation

### GROUND FLOOR

- Hallway
- Lounge: 11'8 x 4'5 (3.56m x 1.35m)
- Kitchen/Diner: 14'8 x 9'1 (4.47m x 2.77m)

### FIRST FLOOR

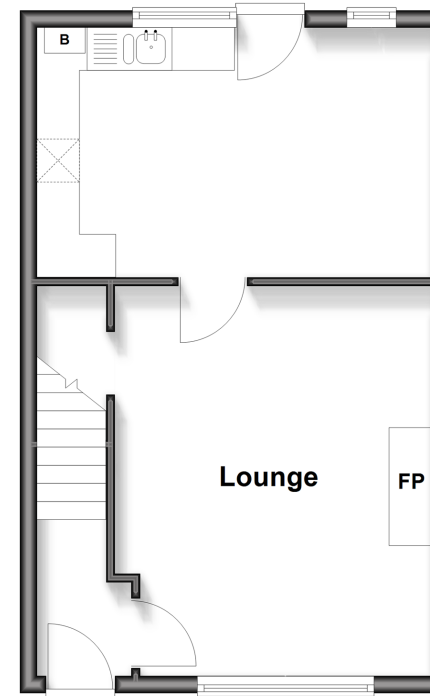
- Landing
- Bedroom 1: 12'2 x 11'7 (3.71m x 3.53m)
- Bedroom 2: 12'5 x 7'5 (3.79m x 2.26m)
- Bathroom: 6'5 x 6'4 (1.96m x 1.93m)

### OUTSIDE

- Rear Garden

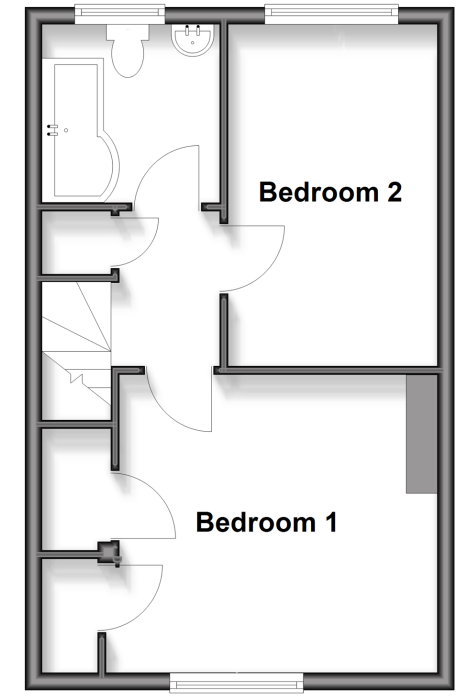
### Ground Floor

Approx. 35.1 sq. metres (378.1 sq. feet)



### First Floor

Approx. 35.1 sq. metres (378.1 sq. feet)



**Unable to display material information. Please check with the branch for material information details for this property**



12637281/20260421/OJ/CW