



MacPhee & Partners

PLOT AT ACHINDARROCH, DUROR



PRICE GUIDE: £68,000

- Attractive Building Plot
- Desirable Rural Location
- Stunning Countryside Views
- Approximately 0.49 Acres
- Detailed Planning Permission
- Services Available for Connection Close by

MacPhee & Partners
Airds House
An Aird
Fort William
PH33 6BL

Tel: 01397 702200
Fax: 01397 701777
www.macphee.co.uk
property@macphee.co.uk

Peacefully situated on the edge of Achindarroch forest in the village of Duror, the sale presents a fantastic opportunity to purchase an attractive and mainly level building plot enjoying views to the surrounding countryside. The plot extends to approximately 0.49 acres and is offered for sale with the great benefit of Detailed Planning Permission.

Location

Located in Achindarroch, locally there is a primary school, pre-school nursery and hotel while nearby Ballachulish (7 miles) offers a range of amenities such as supermarket, post office, doctor etc. With Fort William 18 miles to the north and the Oban 25 miles to the south, the area provides an ideal base to take advantage of all the west highlands have to offer, including skiing, sailing, walking and fishing to name but a few.

Planning Permission

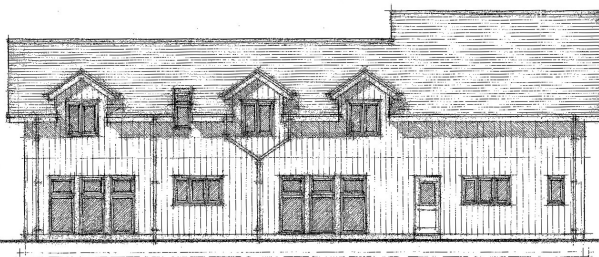
Detailed Planning Permission was granted on 27th August 2015 and is held in perpetuity for the erection of a house, Reference No: 15/01099/FUL. Copies of the plans are available on the Highland Council website.

Services

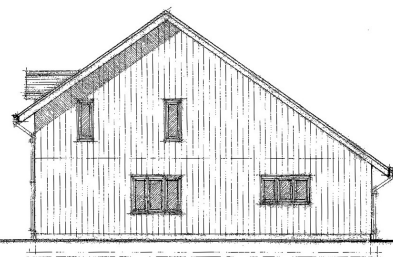
It will be the purchaser's responsibility to connect to the services. Access will be via a shared private access road. Mains water and electricity are nearby. Drainage will be to a septic tank (to be installed), exclusive to the property, within the grounds.

Travel Directions

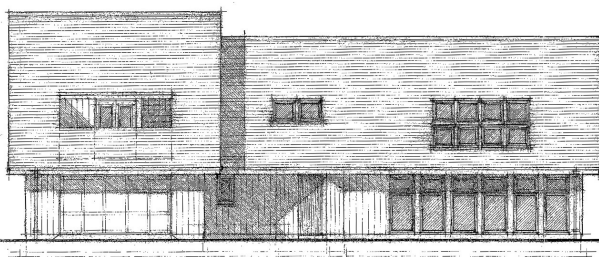
Travelling south on the A828, on entering Duror turn left where signposted Achindarroch. Follow the road up the hill for approx half a mile, and turn right, and the plot is located just beyond Glenduror House on the left hand side.



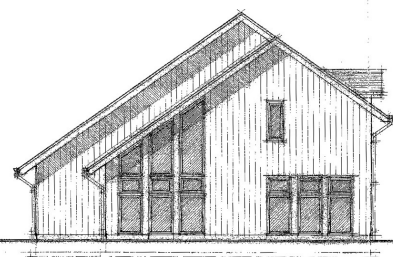
REAR ELEVATION



SIDE ELEVATION



FRONT ELEVATION



SIDE ELEVATION

