

## Stanhope Road, N6

### £650,000

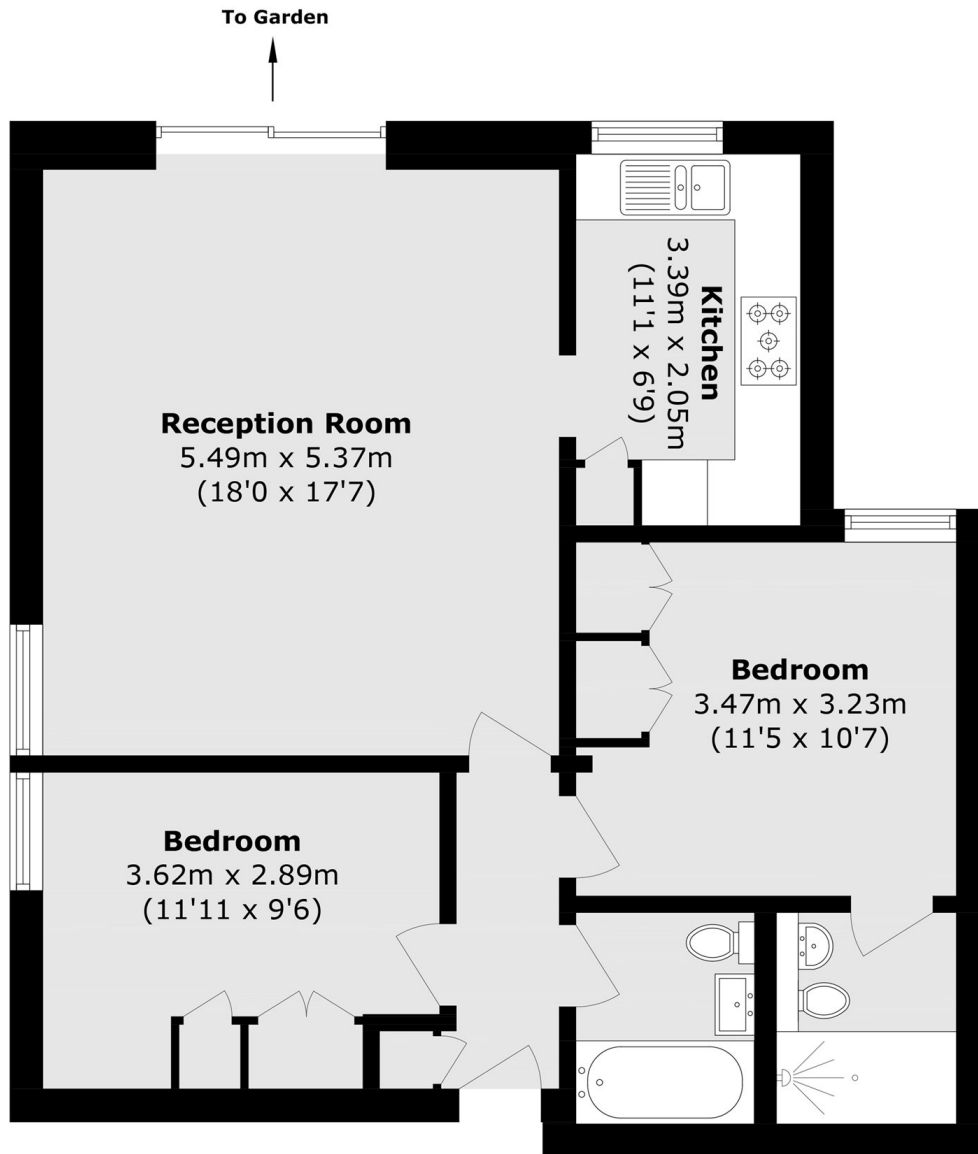
A generous ground floor flat with direct garden access off the reception room, in this small well maintained purpose built block with the advantage of communal gardens and private parking.

Positioned on the corner of Stanhope Road and Claremont Road, there is easy access to Parkland Walk, Crouch End Broadway and the transport connections at Highgate underground station.

### Features

- Two Double Bedrooms
- Two Bathrooms
- Reception Room
- Kitchen
- Private Parking
- Share of Freehold

# Stanhope Road, London, N6



Total area (approx.): 67.1 sq. m (722.2 sq. ft)

## Dexters

Highgate  
35A Highgate High Street  
London  
N6 5JT  
Sales  
020 8545 8584

Energy Rating: C. We aim to make our particulars both accurate and reliable. However they are not guaranteed; nor do they form part of an offer or contract. If you require clarification on any points then please contact us, especially if you're traveling some distance to view. Please note that appliances and heating systems have not been tested and therefore no warranties can be given as to their good working order.

 **RICS** | Regulated  
Estate Agent  
and Letting Agent

[dexters.co.uk](https://www.dexters.co.uk)