



Price
£370,000

Freehold

2x  1x  1x 

**Wisteria Close, Ilford,
Essex, IG1**

OVER 60?

Secure this property
for up to **59% less!**

 **DOUGLAS
ALLEN**
Helping you move forwards



Main features

- Terraced house situated in the popular Redbridge Borough
- Off road parking
- Spacious lounge/Diner with separate kitchen
- Good size rear garden
- Close to local amenities and plenty of transport links

Accommodation

GROUND FLOOR

Hallway

Lounge/Diner: 17'4 x 12'8 (5.29m x 3.86m)

Kitchen: 10'0 x 6'1 (3.05m x 1.86m)

FIRST FLOOR

Landing

Bedroom 1: 12'8 x 10'4 (3.86m x 3.15m)

Bedroom 2: 12'8 x 9'7 (3.86m x 2.92m)

Bathroom: 7'3 x 5'7 (2.21m x 1.70m)

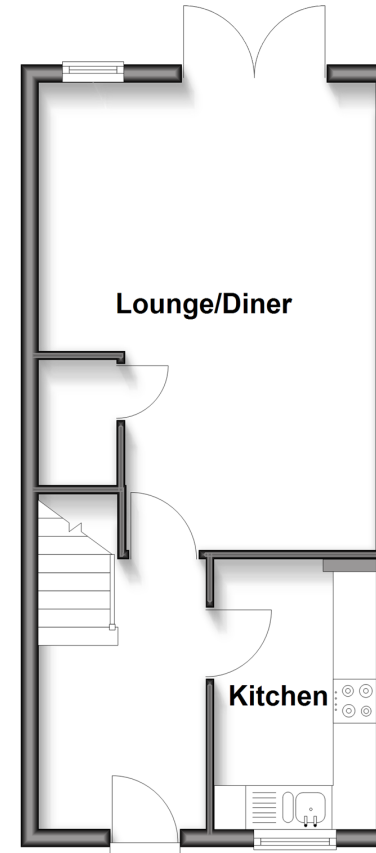
OUTSIDE

Rear garden

Off road parking

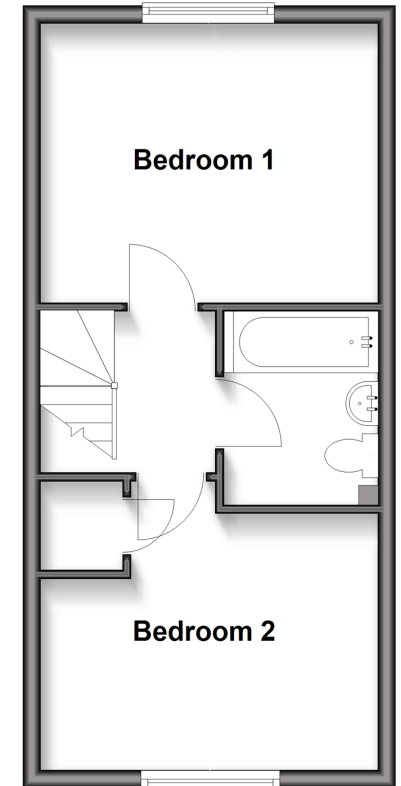
Ground Floor

Approx. 33.4 sq. metres (359.4 sq. feet)



First Floor

Approx. 33.4 sq. metres (359.4 sq. feet)



Call Ilford - 020 8518 0044 ■ douglasallen.co.uk

- Legal advice should be taken to verify fixtures/fittings, planning, alterations and/or lease details
- Appliances & services are untested, dimensions are approximate and floor plans are not to scale
- Through a Homewise Home For Life Plan people aged 60+ can secure this property for up to 50% less, by purchasing a Lifetime Lease.



52016880/20251101/CN/NK