

5 Palmer Road London

A wonderful two bedroom apartment available in the highly sought after Prince of Wales development. The apartment features an open plan living and kitchen area with separate private balcony.

Centrally located the property resides steps away from Battersea Park and close to the shops and bars of Chelsea with excellent transport links including Battersea Park rail station, Battersea Power Station & Vauxhall undergrounds. Residents can also enjoy the on site amenities including the swimming pool, spa, roof terrace and 24 hour concierge.

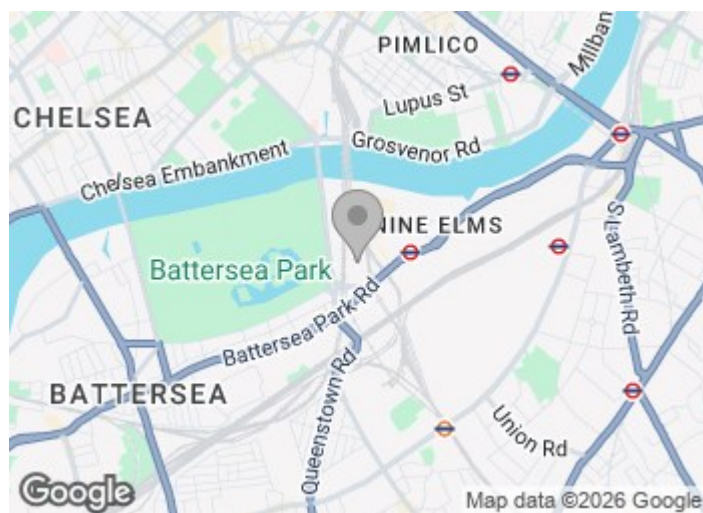
Council Tax Band: Wandsworth - E
Minimum contract: 12 months

£900 Per Week

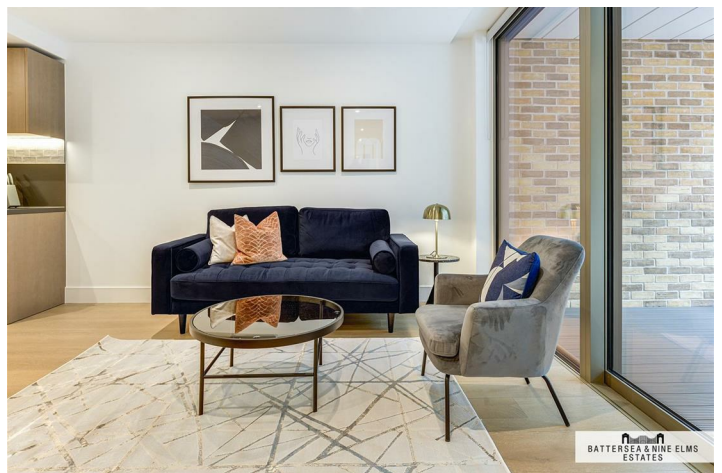
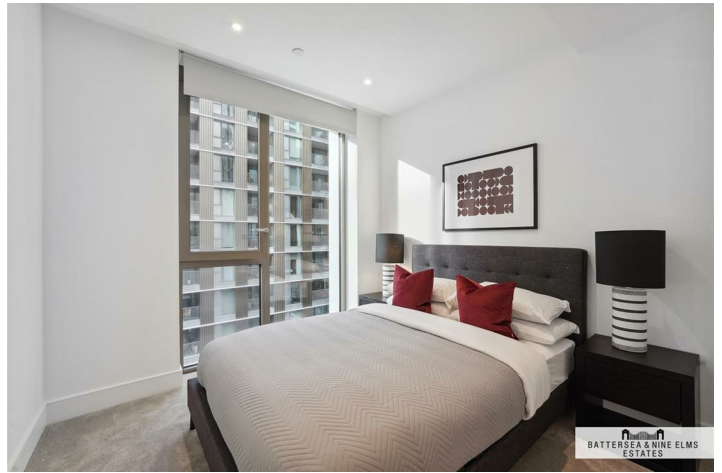
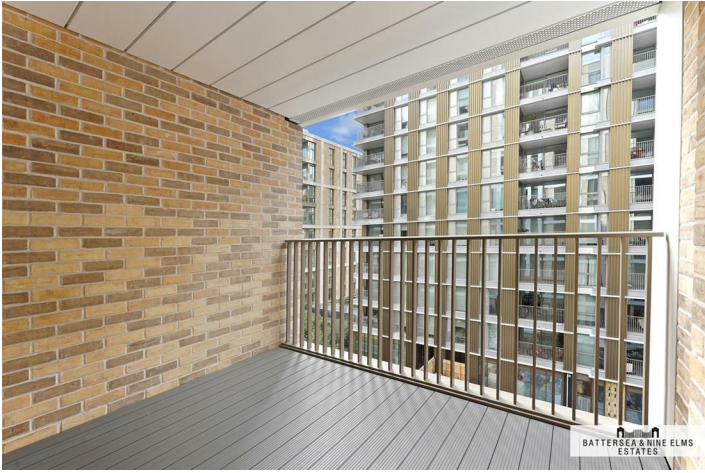
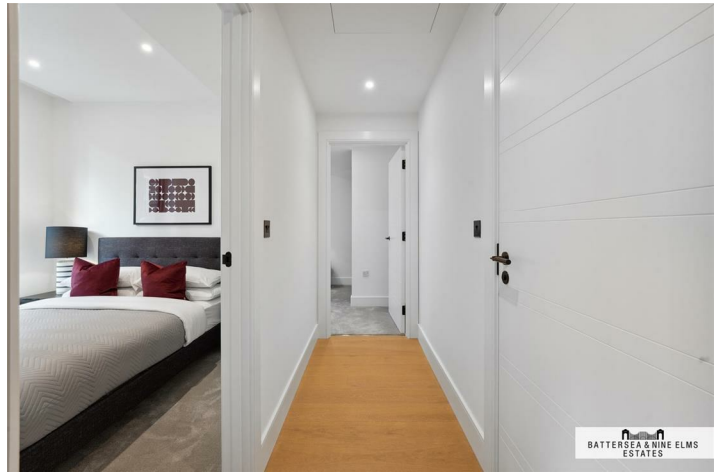
5 Palmer Road London



- 24 Hour concierge
- Two double bedrooms
- Swimming pool
- Private balcony
- Excellent transport links



[Directions](#)



**Salisbury House,
Palmer Road, SW11**
Approximate Gross Internal Area
61.64 sq m / 663 sq ft

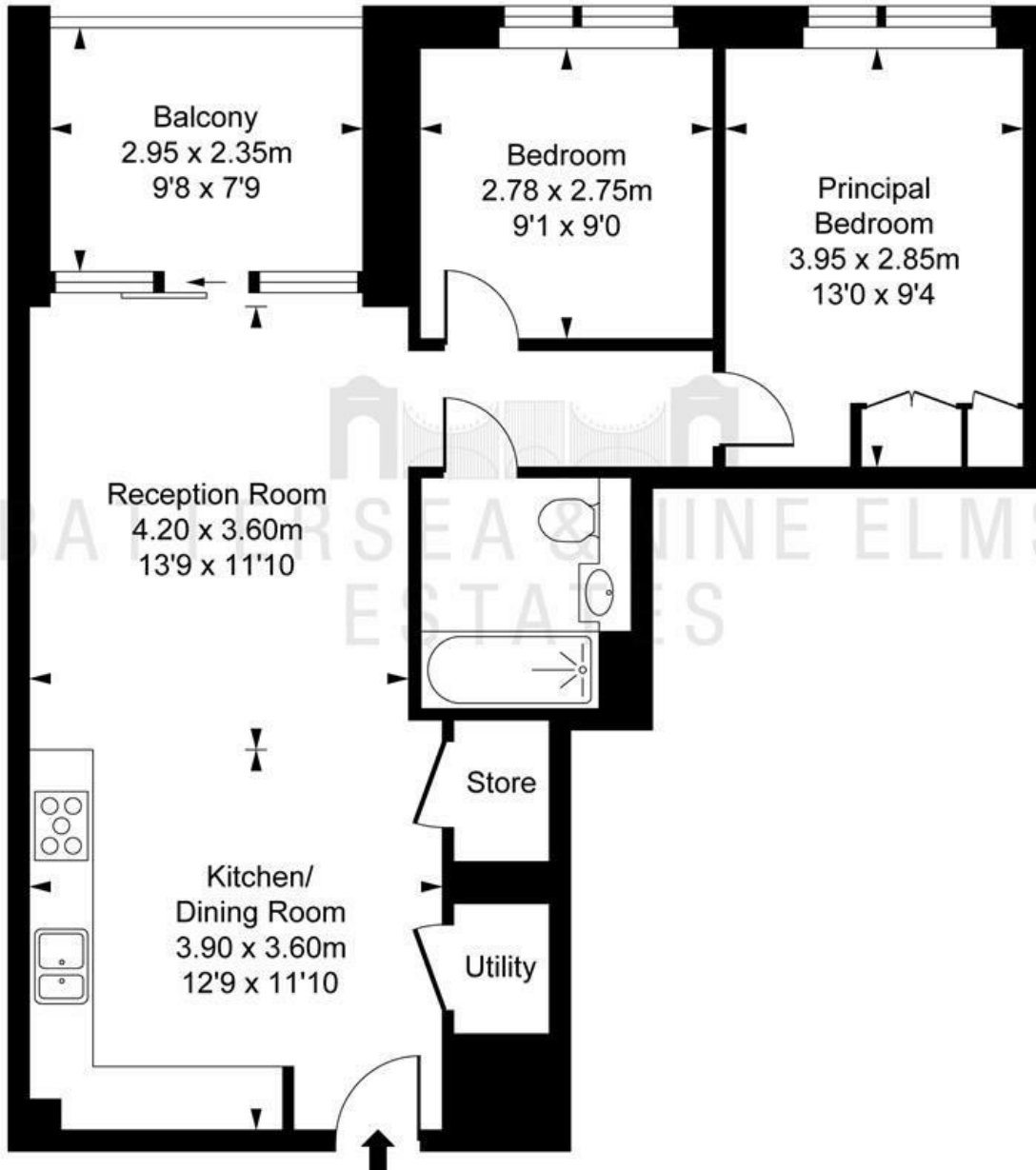


ILLUSTRATION FOR IDENTIFICATION PURPOSES ONLY
ALL MEASUREMENTS AND AREA FIGURES SUPPLIED BY OTHERS. ACCURACY IS NOT GUARANTEED.
THIS PLAN MUST NOT BE REPRODUCED BY ANY OTHER PERSON WITHOUT PERMISSION

These particulars, whilst believed to be accurate are set out as a general outline only for guidance and do not constitute any part of an offer or contract. Intending purchasers should not rely on them as statements of representation of fact, but must satisfy themselves by inspection or otherwise as to their accuracy. No person in this firm's employment has the authority to make or give any representation or warranty in respect of the property.

Energy Efficiency Rating		Environmental Impact (CO ₂) Rating	
	Current	Potential	
<p>Very energy efficient - lower running costs</p> <p>(92 plus) A</p> <p>(81-91) B</p> <p>(69-80) C</p> <p>(55-68) D</p> <p>(39-54) E</p> <p>(21-38) F</p> <p>(1-20) G</p> <p>Not energy efficient - higher running costs</p>	83	83	<p>Very environmentally friendly - lower CO₂ emissions</p> <p>(81-91) A</p> <p>(69-80) B</p> <p>(55-68) C</p> <p>(39-54) D</p> <p>(21-38) E</p> <p>(1-20) F</p> <p>Not environmentally friendly - higher CO₂ emissions</p>
England & Wales	EU Directive 2002/91/EC		England & Wales