



## Gloucester Terrace, W2

£800,000

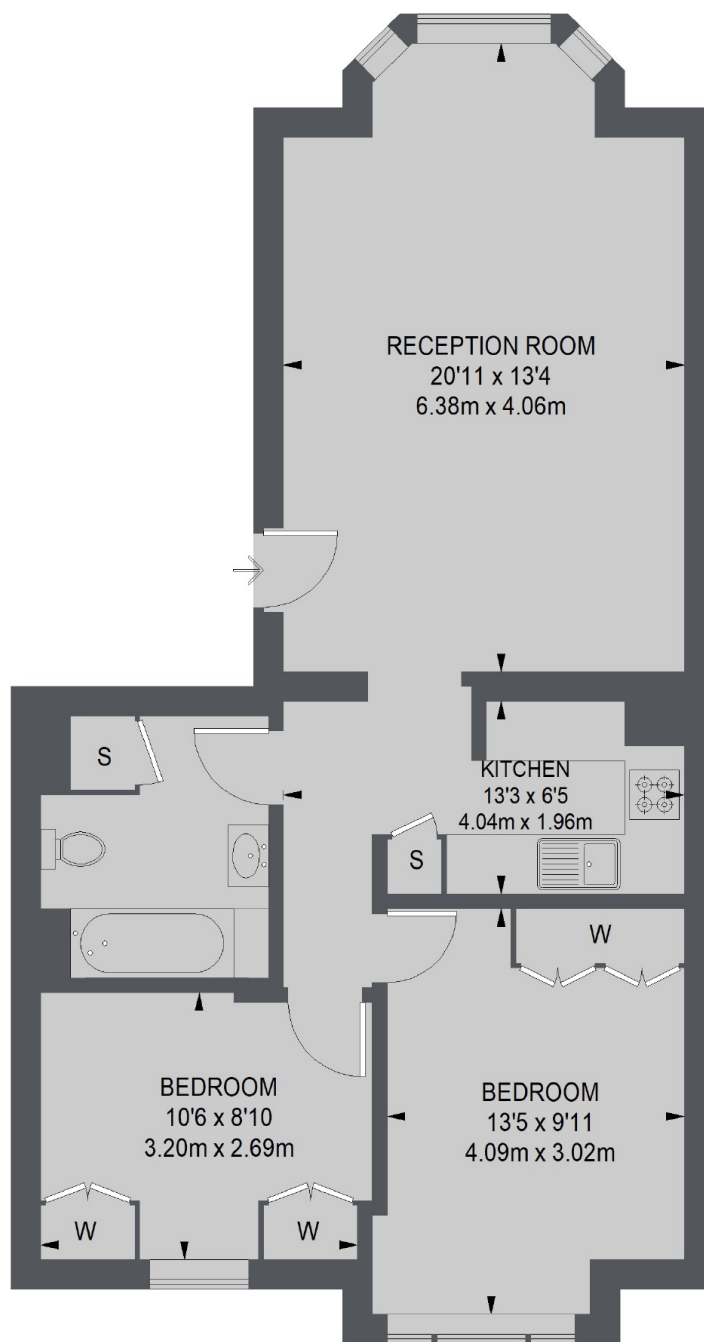
A stylishly refurbished and modernised two bedroom ground floor apartment with high ceilings and period features. Layout includes a separate kitchen, a large double bedroom with storage and a tiled bathroom suite with shower over bath.

Gloucester Terrace is located within walking distance of Paddington station offering easy access to Heathrow and across London. The green spaces of Hyde Park are close by as plenty of local shops and restaurants to choose from.

### Features

- Two Double Bedrooms
- Ground Floor
- Separate Kitchen
- High Ceilings
- Share of Freehold
- Hyde Park

# Gloucester Terrace, London, W2



**GROUND FLOOR**

TOTAL APPROX. FLOOR AREA 676 SQ. FT. (62.80 SQ. M.)