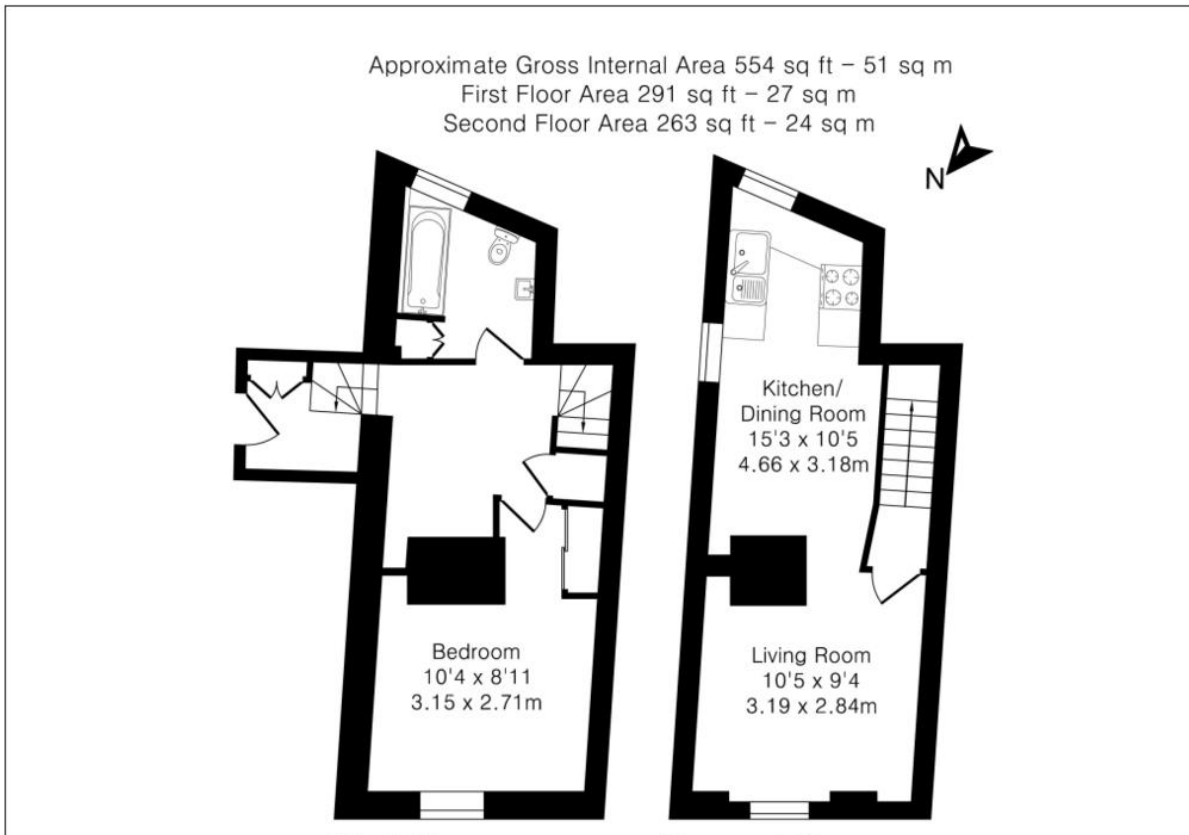




Steven Oates are pleased to offer for let this modern duplex apartment located on the first floor of this Victorian building. Situated in the centre of Hertford Town the property features entrance hallway, one bedroom, lounge/kitchen with newly fitted kitchen and bathroom. Available 29th July. Unfurnished. No parking.







Score	Energy rating	Current	Potential
92+	A		
81-91	B		
69-80	C	71 C	71 C
55-68	D		
39-54	E		
21-38	F		
1-20	G		



Whilst we endeavour to make our sales particulars fair, accurate and reliable, they are only intended as a general guide to the property. Measurements and distances are approximate. These particulars do not form part of any offer or contract. If there are important matters that are likely to affect your decision to buy, please contact us before viewing the property. Please note that we have not tested the services, equipment or appliances in this property, accordingly, we advise prospective buyers to commission their own survey or service reports before finalising any offer to purchase.