



Connells

Welchman Court
Bletchley Milton Keynes



Property Description

Connells are delighted to offer to market this immaculately presented three-bedroom detached family home located in the highly desired location of 'Bletchley Park'. This property is situated in a quiet cul-de-sac offering ample privacy.

Accommodation comprises entrance hall, dual-aspect living room, dual-aspect kitchen/diner with a full range of integrated appliances and downstairs cloakroom all situated on the ground floor. To the first floor there are three well-proportioned bedrooms, an en-suite supporting the master and a family bathroom.

Outside the property benefits from driveway parking for two to three vehicles, a south facing rear garden with a timber pergola and a wraparound front garden.

Welchman Court is located on the 'Bletchley Park' development and is a stone's throw away from Bletchley mainline train station offering direct links into London Euston (Approx 34 mins). There are also other commuter links including bus stops and the A5 and M1 road networks. You can also find ample amenities nearby including numerous schools and shops.

Entrance Hall

Wall mounted radiator. Built-in storage understairs. Doors leading to living room, kitchen/diner and cloakroom.

Living Room

18' 4" x 11' 2" (5.59m x 3.40m)
Enter from entrance hall. UPVC double-glazed window to front aspect, and UPVC double-glazed patio door to rear aspect to access the rear garden. One double and one single wall mounted radiator.

Kitchen/Diner

17' 8" x 13' (5.38m x 3.96m)

Enter from entrance hall. A range of wall and base level units. Integrated appliances to include under-counter fridge, under-counter freezer, washing machine, dishwasher, oven and four ring gas hob. Extractor Hood. Recessed spotlights. Stainless steel sink and drainer. UPVC double-glazed window to rear aspect, UPVC double glazed bay window to front aspect and side aspect, and an additional UPVC double-glazed window to side aspect. Two wall mounted radiators.

Cloakroom

Enter from entrance hall. Two-piece suite comprising WC and pedestal wash hand basin. UPVC double-glazed opaque window to front aspect.

First Floor

Landing

Rise from entrance hall. UPVC double-glazed window to rear aspect over the stairs. Wall mounted radiator. Built-in storage cupboard. Doors leading to all three bedrooms and the family bathroom.

Master Bedroom

11' 6" Maximum x 11' 3" (3.51m Maximum x 3.43m)
Enter from the landing. A double bedroom benefitting from UPVC double-glazed window to front aspect, wall mounted radiator and built-in wardrobe. Door leading to the en-suite.

En-Suite

Enter from the master bedroom. A three-piece suite comprising WC, pedestal wash hand basin and a shower cubicle. UPVC double-glazed opaque window to rear aspect.

Recessed spotlights. Chrome heated towel rail. Extractor fan.

Bedroom Two

11' 5" x 8' 9" (3.48m x 2.67m)

Enter from the landing. A double-bedroom benefitting from UPVC double-glazed windows to front and side aspect, Wall mounted radiator and built-in wardrobe.

Bedroom Three

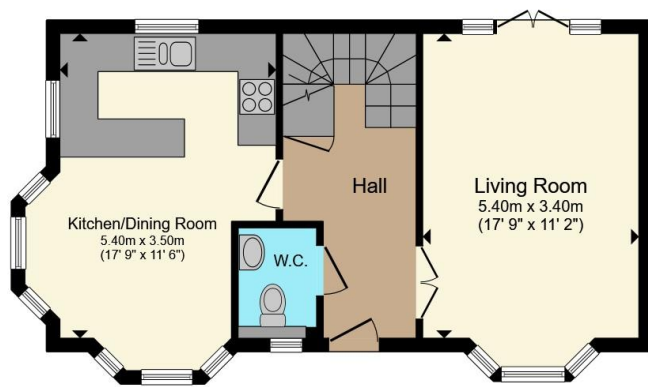
11' 5" x 6' 11" (3.48m x 2.11m)

Enter from landing. UPVC double-glazed windows to rear and side aspect and wall mounted radiator.

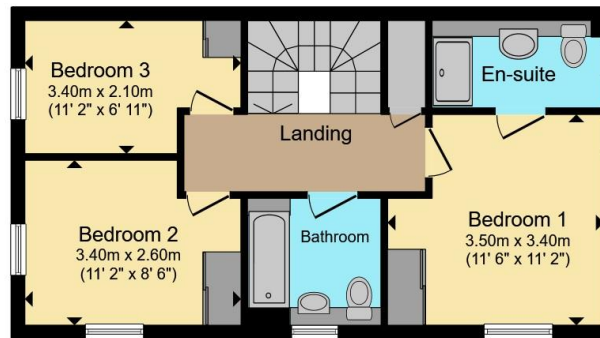
Family Bathroom

Enter from landing. A three-piece suite comprising WC, pedestal wash hand basin and a bathtub with an attached shower. Recessed spotlights and extractor fan. UPVC double-glazed opaque window to front aspect.





Ground Floor



First Floor

Total floor area 89.9 m² (968 sq.ft.) approx

This floor plan is for illustrative purposes only. It is not drawn to scale. Any measurements, floor areas (including any total floor area), openings and orientation are approximate. No details are guaranteed, they cannot be relied upon for any purpose and they do not form part of any agreement. No liability is taken for any error, omission or misstatement. A party must rely upon its own inspection(s). Powered by www.propertybox.io



To view this property please contact Connells on

T 01908 375 241
E bletchley@connells.co.uk

188 Queensway Bletchley
 MILTON KEYNES MK2 2SW

view this property online connells.co.uk/Property/BLE312011

Under the terms of the Estate Agency Act 1979 (Section 21), please note that the vendor is an Employee of the Connells Group of companies.

EPC Rating: C Council Tax Band: D

Tenure: Freehold



1. MONEY LAUNDERING REGULATIONS Intending purchasers will be asked to produce identification documentation at a later stage and we would ask for your co-operation in order that there will be no delay in agreeing the sale. 2. These particulars do not constitute part or all of an offer or contract. 3. The measurements indicated are supplied for guidance only and as such must be considered incorrect. Potential buyers are advised to recheck measurements before committing to any expense. 4. We have not tested any apparatus, equipment, fixtures, fittings or services and it is in the buyers interest to check the working condition of any appliances.

Connells Residential is registered in England and Wales under company number 1489613, Registered Office is Cumbria House, 16-20 Hockliffe Street, Leighton Buzzard, Bedfordshire, LU7 1GN. VAT Registration Number is 500 2481 05.

See all our properties at www.connells.co.uk | www.rightmove.co.uk | www.zoopla.co.uk

Property Ref: BLE312011 - 0003