

Westcroft Square
Hammersmith, W6

Dexters



About the property

An exceptional five bedroom Victorian family home, extending to approximately 2,700 sq. ft, situated on the highly sought after Westcroft Square.

The ground floor features a double reception room with impressive ceiling heights, elegant period detailing and a separate home office overlooking the garden. On the lower ground floor, there is an additional reception room, utility room and a spacious open plan kitchen and dining area with sliding doors opening onto a private west-facing garden.

The first floor has a principal bedroom suite with a walk-in wardrobe and en suite bathroom, alongside a further en suite double bedroom. The second floor offers three additional bedrooms, a family bathroom and excellent storage throughout.

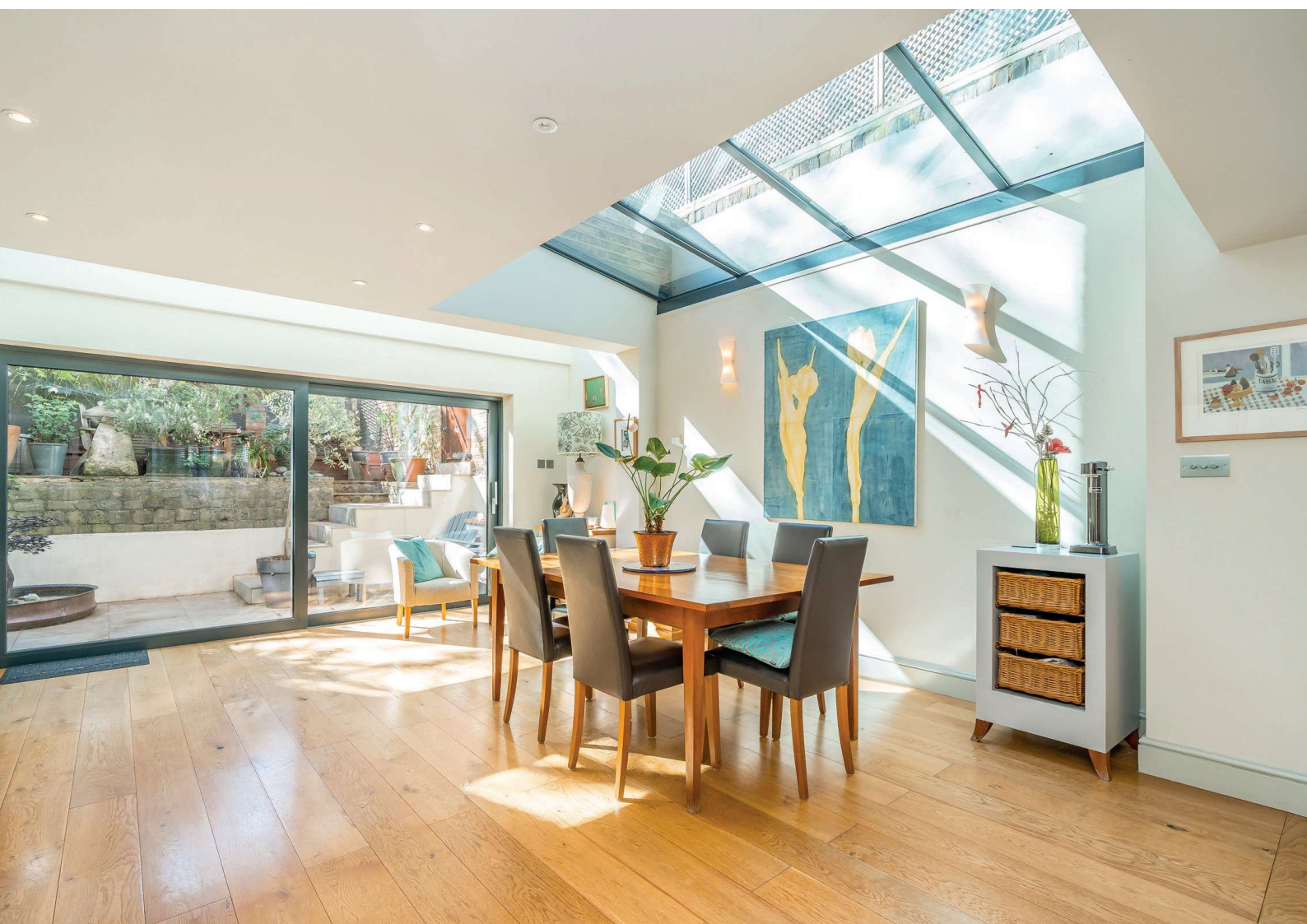
Westcroft Square is positioned just off King Street, offering easy access to an excellent selection of shops, cafés and restaurants, as well as convenient transport links. Both Stamford Brook station and Ravenscourt Park station are within easy reach.



Key features

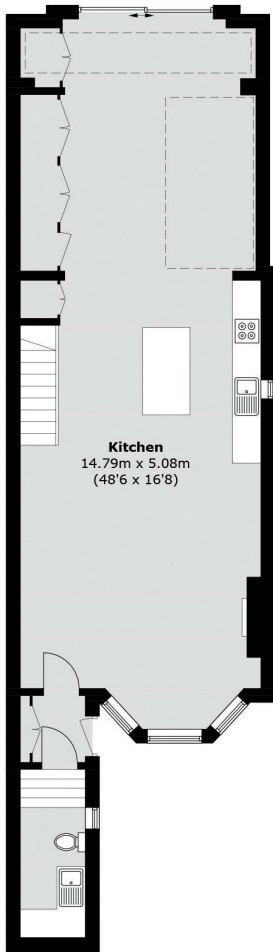
- Victorian House
- Five Bedrooms
- Two Reception Rooms
- Three Bathrooms
- Premium Location
- Ravenscourt Park



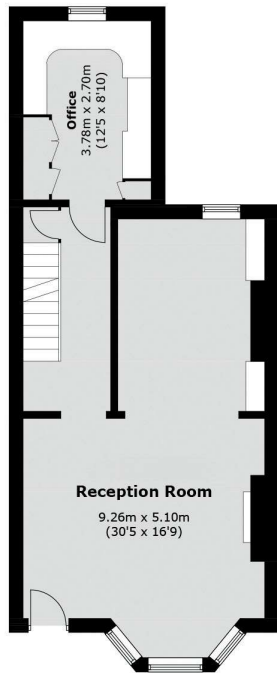




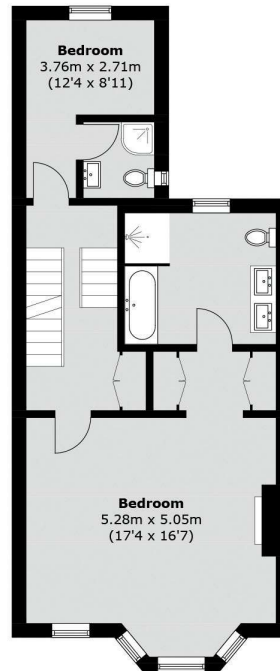




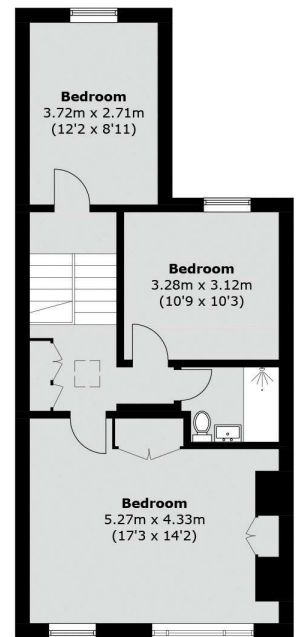
Lower Ground Floor



Raised Ground Floor



First Floor



Second Floor

TOTAL APPROX. FLOOR AREA 2,703.8 SQ. FT (251.2 SQ. M)

Energy Rating: D. We aim to make our particulars both accurate and reliable. However they are not guaranteed; nor do they form part of an offer or contract. If you require clarification on any points then please contact us, especially if you're traveling some distance to view. Please note that appliances and heating systems have not been tested and therefore no warranties can be given as to their good working order.



Dexters Hammersmith
164 King Street
London, W6 0QU
020 8939 6061

Dexters