



2 Forres Drive, Glenrothes - KY6 2JU

Glenrothes

Offers Over £110,000





**home sweet home**  
estate agents  
your local property experts



## 2 Forres Drive

Glenrothes, Glenrothes

New for sale a generously proportioned Mid Terraced Townhouse in small cul de sac, ideal for growing families. Award Winning Home Sweet Home Estate Agents Fife are delighted to present to the market the perfect family home comprising Entrance Hall - Rear Hall - Spacious 'L' Lounge/ Diner - Kitchen - Four Bedrooms Three Double - Shower-Room & Sep WC. Benefitting from DG - GCH - EPC C- HOME REPORT £115,000. 20-year guarantee for roof from dec 2021 - dec 2041. Externally 2 car drive, single garage & private enclosed rear garden with South facing aspect. View Now!

Council Tax band: B

Tenure: Freehold

EPC Energy Efficiency Rating: C

EPC Environmental Impact Rating: C

- SPACIOUS MID TERRACED TOWNHOUSE
- FOUR BEDROOMS THREE DOUBLE
- DG- GCH - EPC C - HOME REPORT £115,000
- GENEROUS 'L' SHAPED LOUNGE/ DINER
- SHOWER-ROOM & SEP WC
- KITCHEN
- ROOF WITH 20 YEAR GUARANTEE 2021 - 2041
- 2 CAR DRIVE - SINGLE GARAGE
- ENCLOSED SOUTH FACING GARDEN
- SUPER HOME FOR GROWING FAMILIES



**GARDEN**

**DRIVEWAY**

2 Parking Spaces

**GARAGE**

Single Garage

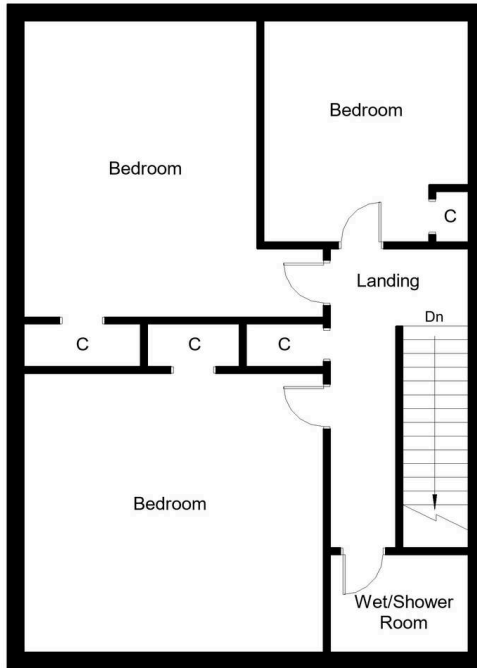




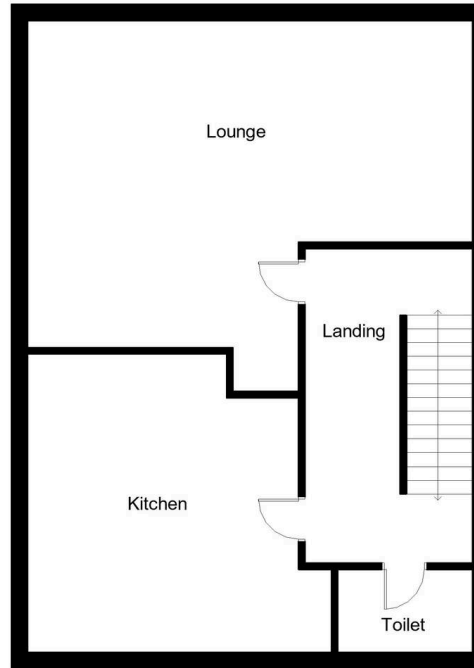
Energy Efficiency Rating		Current	Potential
Very energy efficient - lower running costs			
(92+)	<b>A</b>		
(81-91)	<b>B</b>		
(69-80)	<b>C</b>	71	78
(55-68)	<b>D</b>		
(39-54)	<b>E</b>		
(21-38)	<b>F</b>		
(1-20)	<b>G</b>		
Not energy efficient - higher running costs			
England, Scotland & Wales		EU Directive 2002/91/EC	

Environmental Impact (CO <sub>2</sub> ) Rating		Current	Potential
Very environmentally friendly - lower CO <sub>2</sub> emissions			
(92+)	<b>A</b>		
(81-91)	<b>B</b>		
(69-80)	<b>C</b>	69	73
(55-68)	<b>D</b>		
(39-54)	<b>E</b>		
(21-38)	<b>F</b>		
(1-20)	<b>G</b>		
Not environmentally friendly - higher CO <sub>2</sub> emissions			
England, Scotland & Wales		EU Directive 2002/91/EC	

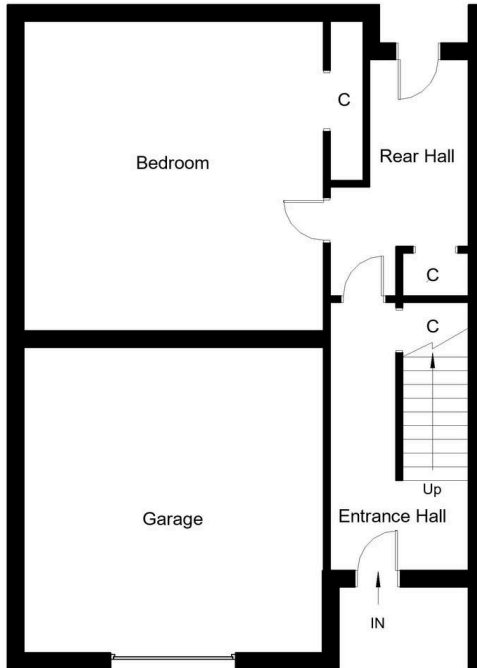
Second Floor



First Floor



Ground Floor



**home sweet home**  
**estate agents**  
your local property experts