



TO LET

172 St. Ediths Marsh, Bromham, Chippenham, SN15 2DJ

£2,200



- Three bedroom detached character property
- Longer term let preferred
- Log burner & aga
- EPC - 55 (D)
- Driveway parking for multiple vehicles
- Landscaped gardens with large patio area
- Integral garage
- Council Tax - E (Wiltshire Council)

THE PROPERTY

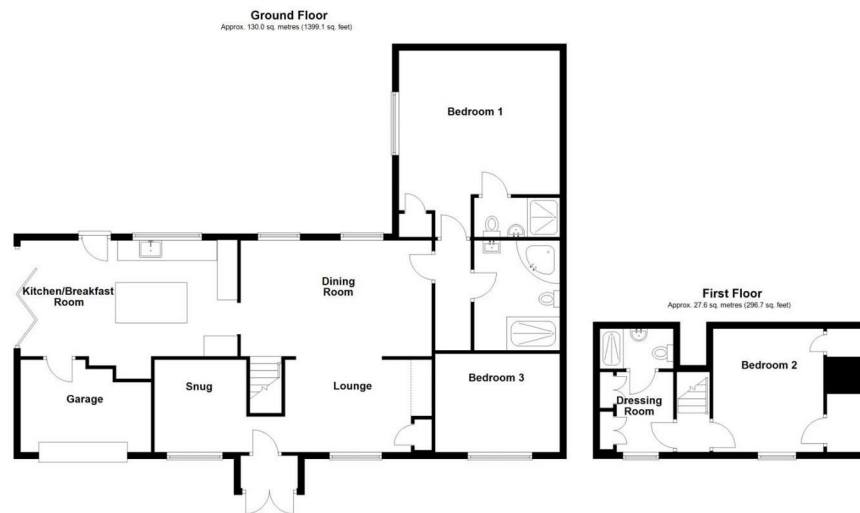
Welcome to 172 St Ediths Marsh, Bromham. A characterful three bedroom detached home offering a good sized garden and a mix of modern and character features.

The ground floor accommodation comprises entrance porch, snug, lounge with log burner, dining area, kitchen breakfast room with bi folding doors onto the patio, the main bedroom with en-suite shower room, bedroom three and bathroom. On the first floor is bedroom two, a dressing room with en-suite shower room.

The property further benefits from an integrated garage with up and over door to the front and access door from the kitchen along with power and lighting, driveway parking for multiple vehicles and a very well presented garden with fantastic patio and covered seating area and oil central heating.

All room measurements are approx;
 Kitchen Breakfast Room: 6.45m x 2.85m
 Dining Room: 5.69m x 3.45m
 Lounge: 4.19m x 3.45m
 Snug: 2.74m x 3.45m
 Bedroom One: 4.79m x 4.28m
 Bedroom Two: 3.28m x 3.72m
 Bedroom Three: 2.93m x 3.71m

SITUATION



Directions