



Lodore Gardens, NW9

£700,000

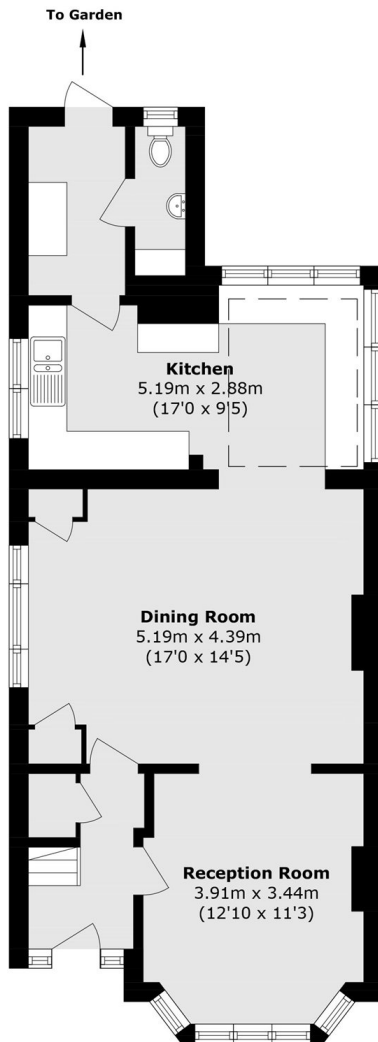
A delightful three bedroom semi-detached family home located in the Springfield Estate. This property is presented in excellent condition throughout, comes with two bathrooms, a private driveway, separate kitchen and large separate storage room.

Lodore Gardens is situated in the highly sought-after Springfield Estate and is within easy access of both Kingsbury (Jubilee Line) and Colindale (Northern Line) underground stations, as well as the Edgware Road's shopping and transport facilities.

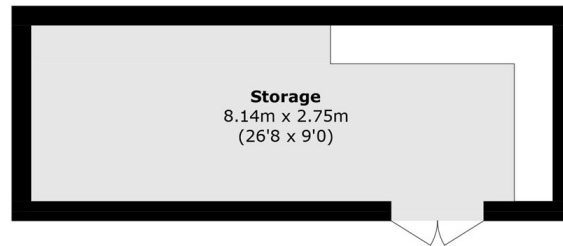
Features

- Semi-Detached
- Two Bathrooms
- Private Driveway
- Separate Kitchen
- Separate Storage Room
- Great Condition

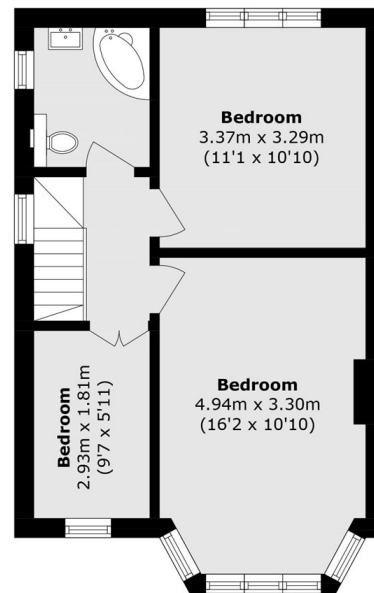
Lodore Gardens, London, NW9



Ground Floor



Ground Floor



First Floor

Total area (approx.): 105.3 sq. m (1133.4 sq. ft)

Outbuilding area (approx.): 22.3 sq. m (240.0 sq. ft)