

RICE+ROMAN



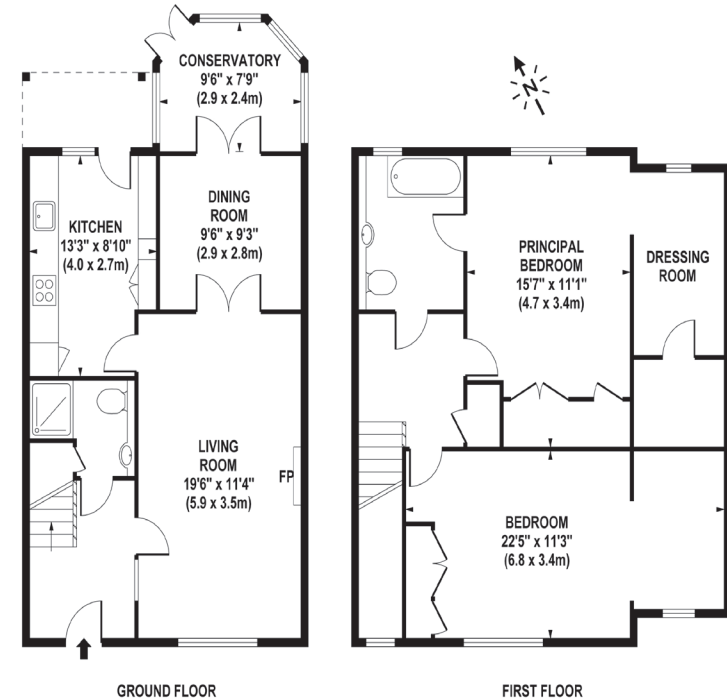
Mytchett Heath, Camberley

GU16 6DP



Living Area

Mytchett Heath, Mytchett, Camberley, Surrey



APPROX. GROSS INTERNAL FLOOR AREA 1330 SQ FT / 124 SQ M

Whilst every attempt has been made to ensure the accuracy of the floorplan contained here, measurements of doors, windows and rooms are approximate and no responsibility is taken for any error omission or mis-statement. These plans are for representation purposes only and should be used as such by any prospective purchaser / tenant. The services, systems and appliances listed in this specification have not been tested and no guarantee as to their operating ability or their efficiency can be given

- Exclusive For Those Over 55s
- Two Double Bedroom Cottage
- Conservatory
- Patio Garden
- Guest Suite and Laundry Facilities
- Resident Estate Manager

Price: £365,000
Service Charge: £7,708 PA
Ground Rent: £0 PA
Other Charges: N/A
Lease Length: 2145 Expiry Date
Tenure: Leasehold

EPC Rating: D

For more information
please contact:

Rice & Roman
T: 01344 981246
E: info@riceandroman.co.uk
Lynwood Village, SL50FJ
www.riceandroman.co.uk

RICE + ROMAN

Agents Notices - These property details are set out as a general outline only and do not constitute any part of an Offer or Contract. Any services, equipment, fittings or central heating systems have not been tested and no warranty is given or implied that these are in working order. Buyers are advised to obtain verification from their solicitor or surveyor. Fixtures, fittings and other items are not included unless specifically described. All measurements, distances and areas are approximate and for guidance only. Room measurements are taken to be the nearest 10cm and prospective buyers are advised to check these for any particular purpose, e.g. fitted carpets and furniture. This material is protected by the laws of copyright. The owner of the copyright is Countrywide Estate Agents. This property sheet forms part of our database rights and copyright laws. No unauthorised copying or distribution without permission.