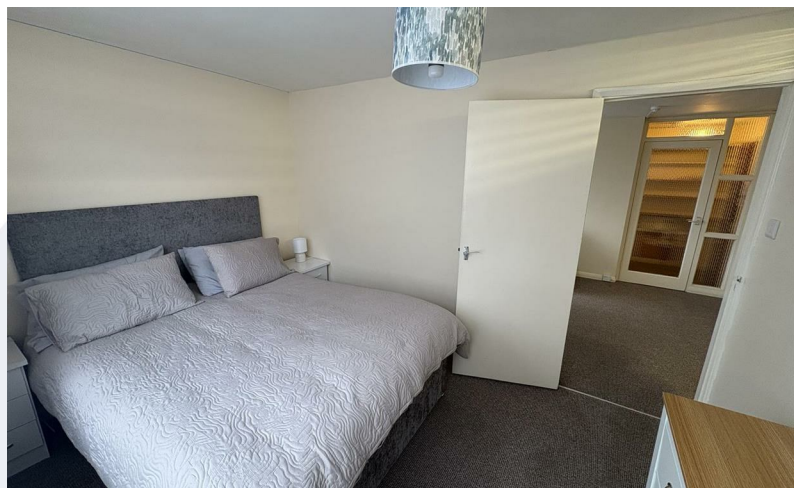




## Wilbury Road, Hove, BN3 3JP

**£1,200 Per month**



- Central Location
- One Double Bedroom
- Available Now
- Council Tax Band A
- Private residence parking

- Furnished
- Electric Heating
- First Floor
- Short Walk to Hove Seafront



# Wilbury Road, Hove, BN3 3JP

## £1,200 Per month



### Summary

#### FIRST FLOOR ONE BEDROOM FURNISHED FLAT IN CENTRAL HOVE

Nestled in the heart of Hove on the desirable Wilbury Road, this charming first-floor flat offers a perfect blend of comfort and convenience.

Situated in a central location, residents will enjoy easy access to a variety of local amenities, including shops, cafes, and parks, all within a short stroll. The vibrant atmosphere of Hove is at your doorstep, offering a delightful mix of seaside charm and urban living.

This flat is an excellent opportunity for those looking to embrace the Hove lifestyle in a comfortable and well-located home. Don't miss the chance to make this lovely flat your own.

### Lounge

16x9'6 (4.88mx2.90m)

Good size lounge with beige carpets, built in storage cupboards, sofa and dining table.

### Kitchen

8'4x6'3 (2.54mx1.91m)

Cream kitchen with free standing oven / hob, fridge freezer and washing machine.

### Bedroom

11'3x8'3 (3.43mx2.51m)

Double bedroom with bed, mattress, bedside tables and chest of draws.

### Bathroom

Standard bathroom with tub, over head shower, WC and wash hand basin.

### Additional Information

EPC - E

Parking Zone - N

Council Tax - A

Energy Efficiency Rating		
	Current	Potential
Very energy efficient - lower running costs		
(92 plus) <b>A</b>		
(81-91) <b>B</b>		
(69-80) <b>C</b>		75
(55-68) <b>D</b>		
(39-54) <b>E</b>	40	
(21-38) <b>F</b>		
(1-20) <b>G</b>		
Not energy efficient - higher running costs		
<b>England &amp; Wales</b>	EU Directive 2002/91/EC 