



Trinity Rise, SW2

£575,000

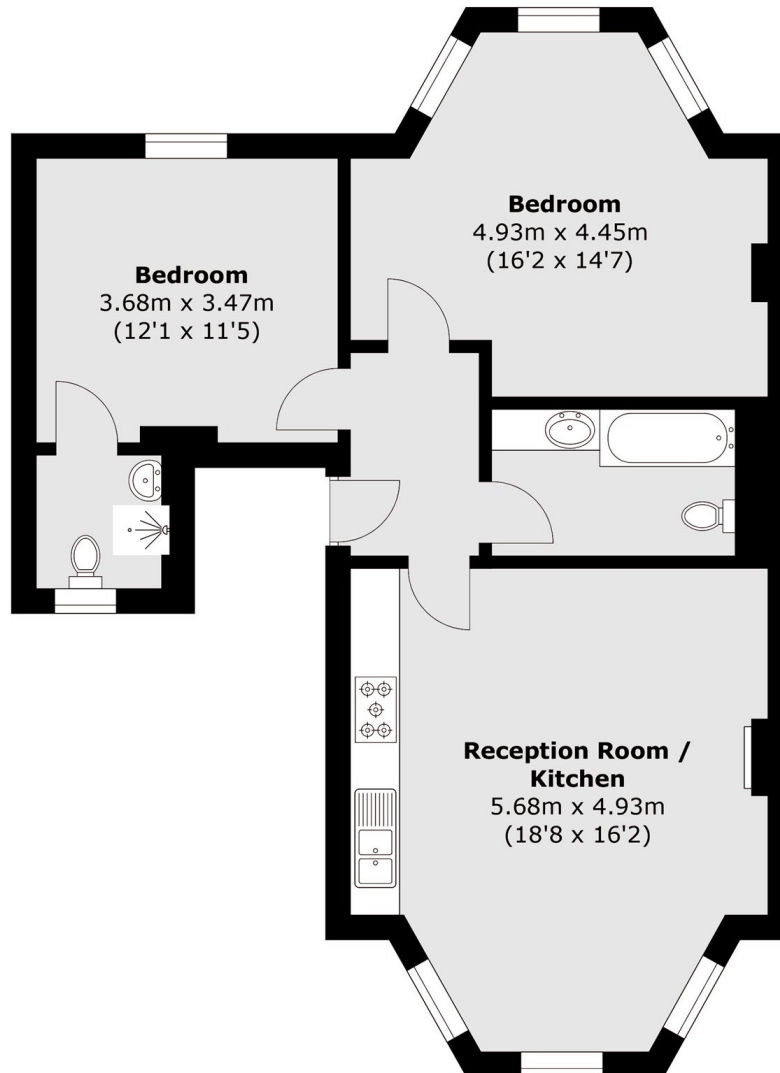
This charming two double bedroom period property, located just moments from Brockwell Park, is coming to the market with no onward chain. The home features a spacious reception room, two bathrooms, a shared garden and an allocated parking space on the driveway, offering both character and convenience in a highly sought-after location.

Situated on the highly sought after Trinity Rise, this property benefits from an exceptional location on the border of Brixton, Herne Hill, and Tulse Hill. With easy access to a wide selection of independent shops, cafés, restaurants, and local amenities. Brockwell Park - one of South London's most loved green spaces is just moments away, offering acres of open parkland, a lido, sports facilities, and stunning hilltop views.

Features

- Two Double Bedrooms
- Allocated Parking Space
- Shared Garden
- Brockwell Park
- No Onward Chain
- Two Bathrooms

Trinity Rise, London, SW2



Total area (approx.): 76.2 sq. m (781.5 sq. ft)