



## Glyne Drive, Bexhill-On-Sea TN40 2PW

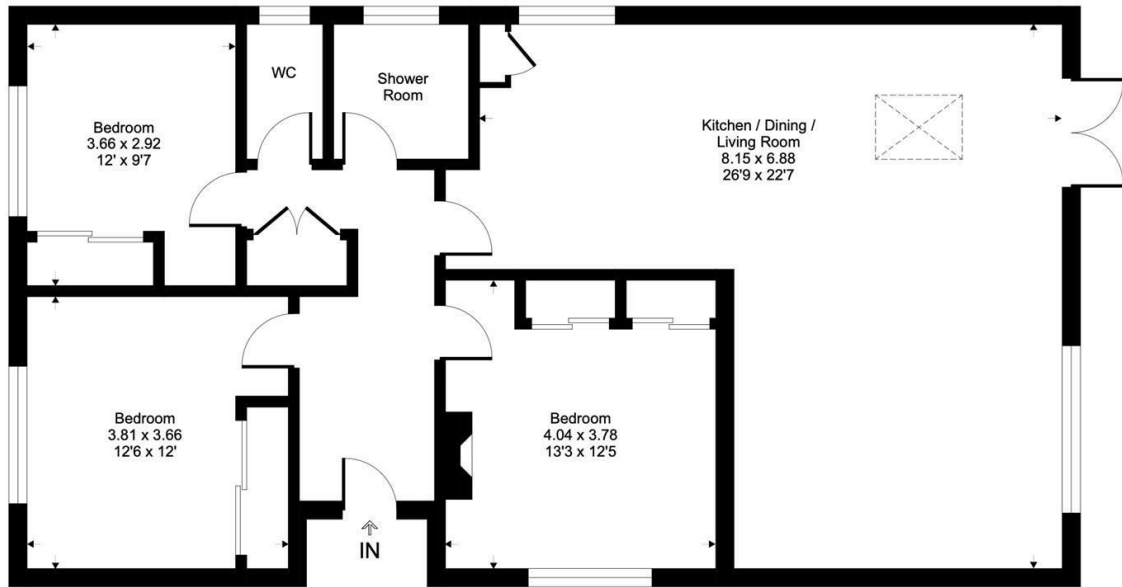
Offers in excess of £430,000



A stylish three bedroom DETACHED BUNGALOW situated in a sought after location within a quiet road. It's enviably positioned within easy reach of Ravenside Retail Park, the beach, popular Schools, local bus services and the shopping facilities of Bexhill Town Centre making this home perfectly placed for FAMILY LIFE. The accommodation here has been EXTENDED and is WELL PRESENTED THROUGHOUT, having undergone a complete rewire and new central heating system including a combi boiler. Arranged as a bright living and dining space with far reaching SEA VIEWS, enjoying double doors leading out to the REAR GARDEN and a skylight over the dining table, which leads through to a CONTEMPORARY FITTED KITCHEN with a central island creating the perfect area for entertaining, with ample storage and worktop space, plus room for appliances. There are three well proportioned bedrooms, all with BUILT-IN STORAGE, together with a modern tiled shower room and SEPARATE W/C. Externally the garden relishes a SUNNY ASPECT and is arranged over two descending tiers, one laid with shingle and another with a level of lawn and decking making this the perfect space to dine al fresco. To the front of the property the driveway offers OFF ROAD PARKING FOR TWO, including handy side access.

## Glyne Drive, TN40

Approximate Gross Internal Area = 107 sq m / 1156 sq ft



This floor plan is for representation purposes only as defined by the RICS code of Measuring Practice (and IPMS where requested) and should be used as such by any prospective purchaser. Whilst every attempt has been made to ensure the accuracy contained here, the measurement of doors, windows and rooms is approximate and no responsibility is taken for any error, omission or mis-statement. Specifically no guarantee is given on the total area of the property if quoted on the plan. Any figure provided is for guidance only and should not be used for valuation purposes.

Copyright Casaphoto Ltd. 2026 - Produced for MADE

