

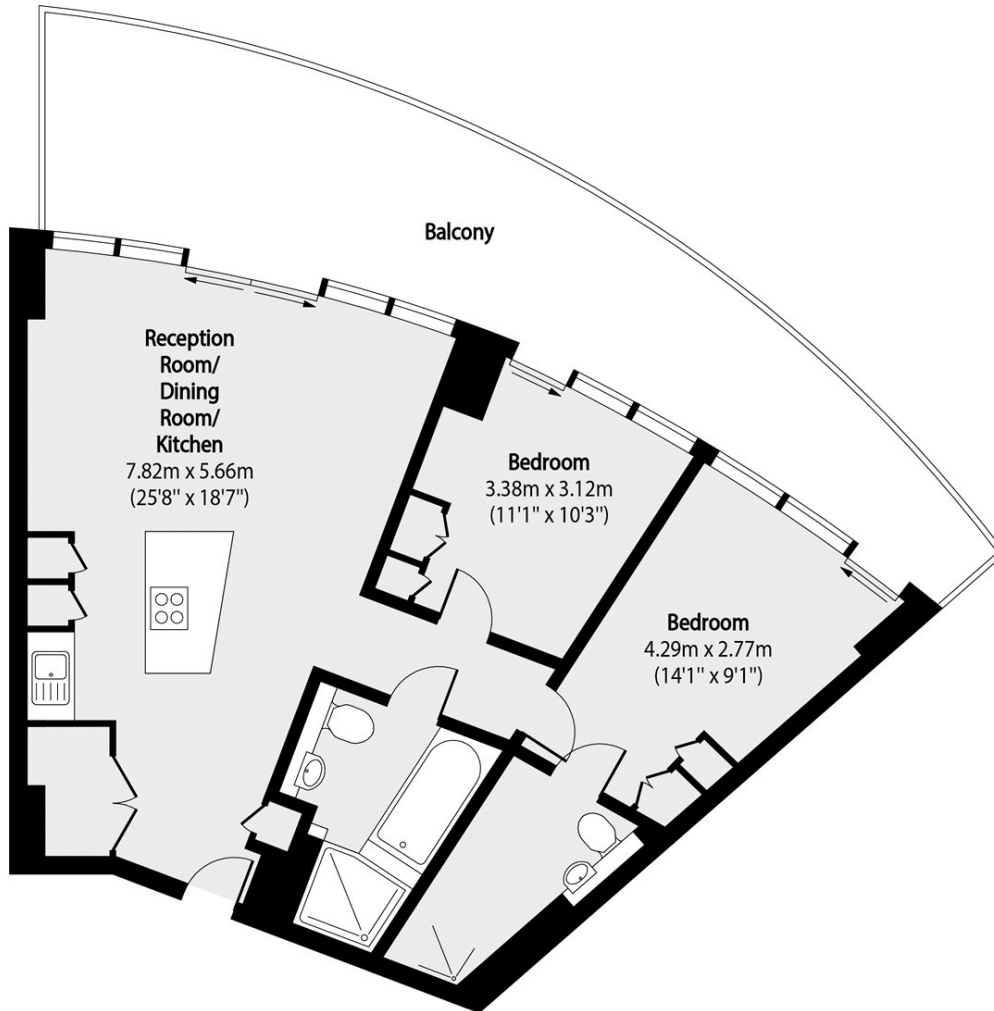


CROSSHARBOUR PLAZA, E14

£650,000

A two bedroom, two bathroom apartment on the fortieth floor of the iconic Arena Tower that offers west-facing VIEWS and is finished to a high standard. Arena Tower offers access to a 24hr concierge service, gym with boxing facilities and a swimming pool.

- Two Bedrooms
- Gym and Swimming Pool
- Private Balcony
- Leas Length 980 Years
- Ground Rent £750
- Service Charge £6,500



Total area (approx): 70.60 sq m (760 sq. ft)

Balcony Total area (approx): 28.71 sq m (309 sq. ft)

LiFE RESIDENTIAL

36 Millharbour, London, E14

9JS

Sales: 020 3668 1033

Lettings: 020 3668 1030

Energy Rating: B. We aim to make our particulars both accurate and reliable. However they are not guaranteed; nor do they form part of an offer or contract. If you require clarification on any points then please contact us, especially if you're traveling some distance to view. Please note that appliances and heating systems have not been tested and therefore no warranties can be given as to their good working order.